

WhereScape RED

Release Notes

Version 8.3.1.0 | February 2019

Table of Contents

Table of Contents	1
WhereScape RED 8.3.1.0 Release Update	2
Upgrading to version 8.3.1.0	2
Detailed Changes from Previous Versions.....	2
Significant New Features and Improvements in this Release	3
Support for additional Windows scripting languages.....	3
New script and template editors with improved features.....	4
Option to save stored procedures in the same database as the associated table (SQL Server)	5
Support for script based custom update processing of tables in custom database targets	6
Migrated RED to 64-bit application.....	7
Migrate the metadata connection to a 64-bit ODBC DSN	7
Migrate the target connection(s) to a 64-bit ODBC DSN.....	8
Migrate the source connection(s) to a 64-bit ODBC DSN	8
Migrate to 64-bit SSIS loads & exports (if used)	8
Migrate to 64-bit PowerShell (if used).....	8
Migrate Oracle scheduler to 64-bit Direct Path Load (if used).....	8
Recommendation.....	8
New dedicated command-line interface (beta).....	9
Important Messages when Upgrading from Earlier Versions	10
Important Messages when upgrading from 8.2.1.1 or earlier.....	10
Important Messages when upgrading from 8.1.1.0 or earlier.....	10
Important Messages when upgrading from 8.0.1.0 or earlier.....	11
Important Messages when upgrading from 6.9.1.0 or earlier.....	11
Important Messages when upgrading from 6.8.7.0 or earlier.....	11
Important Messages when upgrading from 6.8.6.0 or 6.8.6.1 or earlier	11
Important Messages when upgrading from 6.8.5.0 or earlier.....	13
Important Messages when upgrading from 6.8.4.0 or earlier.....	13
Important Messages when upgrading from 6.8.3.0 or earlier.....	13
Important Messages when upgrading from 6.8.2.0 or earlier.....	13
Detailed Changes in RED 8.3.1.0	14
Detailed Changes in RED 8.2.1.1	17

WhereScape RED 8.3.1.0 Release Update

WhereScape is pleased to announce that WhereScape RED 8.3.1.0 is now available.

Upgrading to version 8.3.1.0

Login to <https://www.wherescape.com> and download RED 8.3.1.0 from the downloads page in the **Support** section.

Detailed Changes from Previous Versions

Details of changes made in previous versions of RED are available on the <https://www.wherescape.com/support/red-release-notes/> page in the **Support** section.

Kind Regards,
WhereScape RED Team

Significant New Features and Improvements in this Release

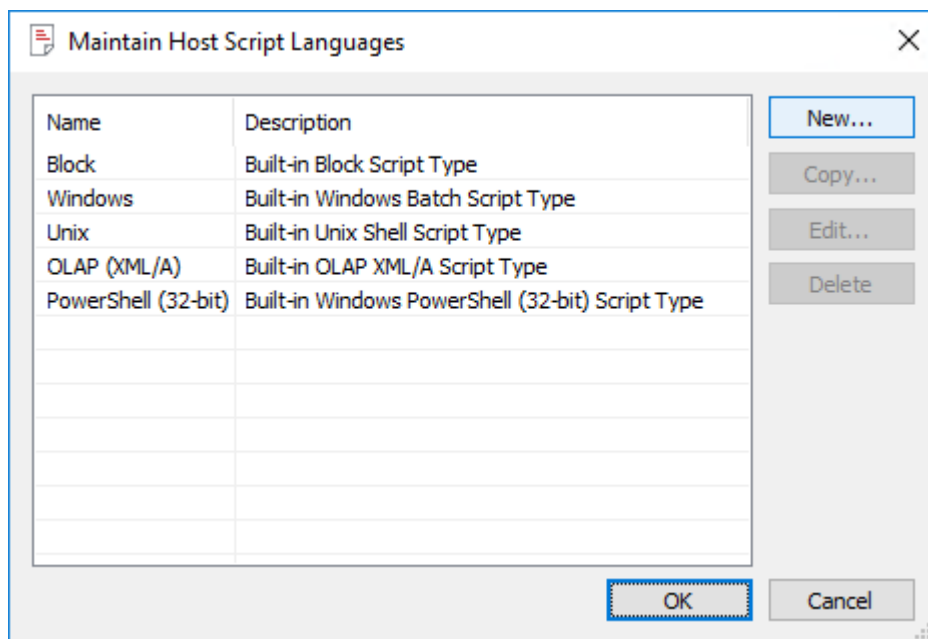
The following significant new features have been added since Version 8.2.1.1

- Implemented solution to allow more Windows scripting languages to be supported
- Implemented new script and template editors that includes several new features, including syntax highlighting
- Added setting for SQL Server target connections so that new stored procedures are either created in the repository database or in the same target database as the associated table
- Added the ability for the custom update routine to be of type script in addition to type procedure for table objects in custom DB targets
- Migrated RED to a 64-bit application
- Implemented a command line interface to perform common RED functions

Support for additional Windows scripting languages

WhereScape RED now provides a facility for defining and managing host script languages to enable users to implement host scripts in their preferred scripting language, e.g. Python, Perl, PowerShell, etc.

The new **Host Script Languages** tool provides users with the flexibility of using different types of script languages for the various script-based processing that they perform within RED, such as the script based update of the data warehouse content, created in custom database targets.



Notes

For Unix host scripts for load objects, RED leverages the Unix host script standard of defining the interpreter directive, after the Shebang (!) character sequence in the first line of the Unix host script. This line provides the path to the command interpreter the operating system must use to execute the script.

For example:

```
#!/usr/bin/perl -T
```

This enables RED users to also leverage a number of Unix host script languages for loading data into their load objects.

New script and template editors with improved features

A new editor for script/template editing has been implemented in WhereScape RED which provide users with the following features:

- bash/DOS/PowerShell scripts and Pebble template syntax highlighting
- improved find feature (repeated find, up and down, etc.)
- toggle the display of line numbering
- a status bar that includes line number, line length, selected text length, etc.
- a context sensitive toolbar
- tab to space conversion and vice versa
- uppercase, lowercase, titlecase text conversion command
- increase/decrease text indent command
- bookmark support

```

@echo off
setlocal enabledelayedexpansion
setlocal enableextensions
REM *****
REM ***** Load of C:\Program Files (x86)\WhereScape\Multi_Source_DW\Tutorial\forecast.txt into load_forecast
REM *****

REM *****
REM ***** NOTE: The following environment variables will be set
REM ***** WSL_LOAD_TABLE = the load table name
REM ***** WSL_LOAD_SCHEMA = the load table schema
REM ***** WSL_LOAD_DB = the load table database for the target connection
REM ***** WSL_SEQUENCE = a unique sequence number for the scheduler
REM ***** WSL_WORKDIR = the work directory defined in the connection
REM ***** WSL_BINDIR = the directory of the executable running this script
REM ***** WSL_TGT_SERVER = the server defined in the target connection
REM ***** WSL_DATABASE = the database defined in the connection
REM ***** WSL_USER = the dss user defined in the connection
REM ***** WSL_PWD = the dss password defined in the connection
REM ***** WSL_PARAMnnn = Any parameters that start with the load
REM ***** table name. For example: A table called load_abc has a
REM ***** parameter called load_abc_server defined. In this case
REM ***** a variable called WSL_PARAM_SERVER will be created
REM *****
REM If a wild card is used in the file name then %FILE_NAME%
REM in the control file must be enclosed in single quotes,
REM otherwise it must not be enclosed in quotes.

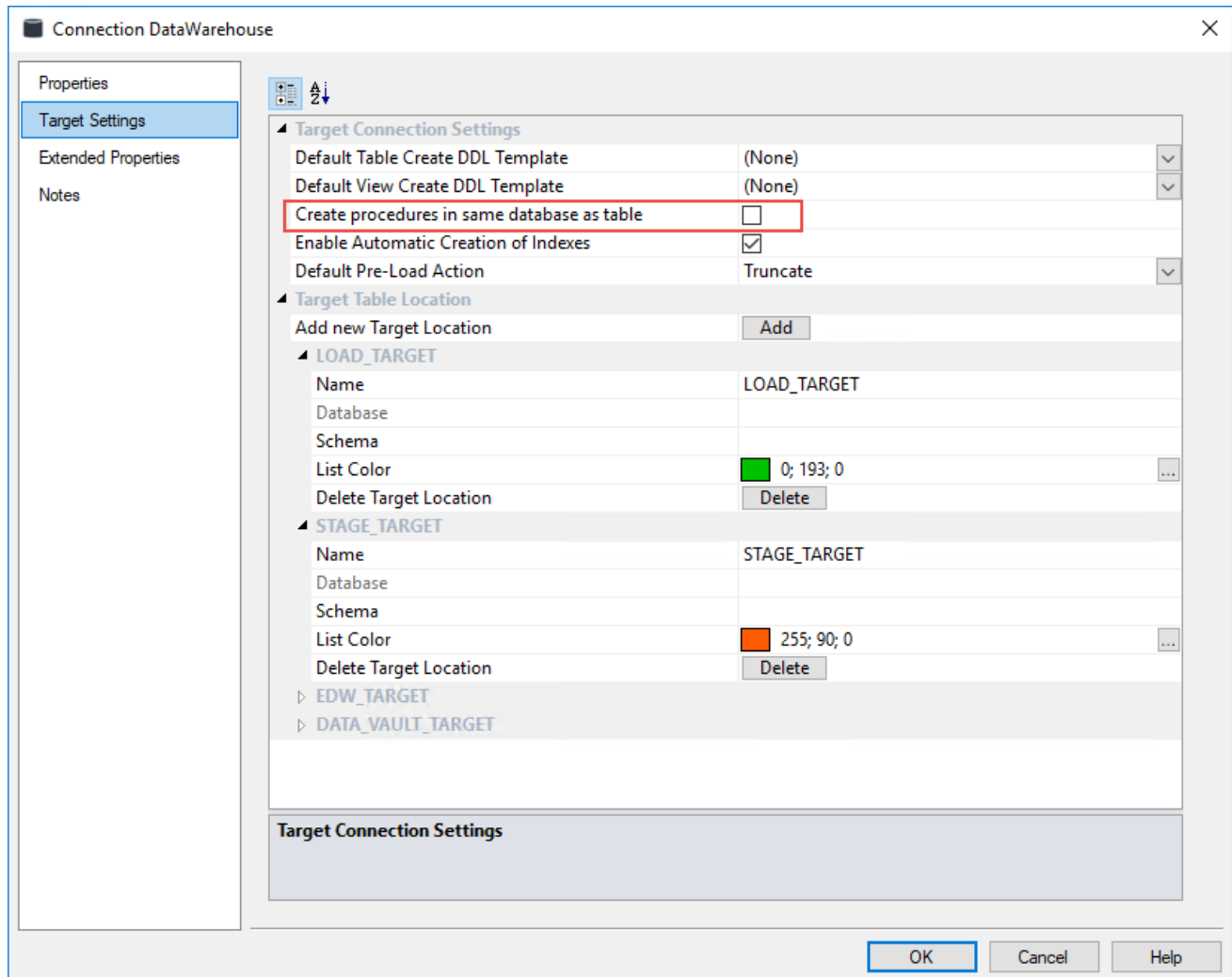
SET LOAD_FILE="C:\Program Files (x86)\WhereScape\Multi_Source_DW\Tutorial\forecast.txt"

if defined WSL_LOAD_TABLE (SET LOAD_TABLE=%WSL_LOAD_TABLE%) else SET LOAD_TABLE=load_forecast
if defined WSL_LOAD_SCHEMA (if "!WSL_LOAD_SCHEMA:~-1!" == "." (SET LOAD_SCHEMA=!WSL_LOAD_SCHEMA!) else SET LOAD
if defined WSL_LOAD_DB (SET LOAD_DB=%WSL_LOAD_DB%) else SET LOAD_DB=Multi_Source
if defined WSL_TGT_SERVER (SET SERVER=%WSL_TGT_SERVER%) else SET SERVER=DESKTOP-HGRS715
if defined WSL_DATABASE (SET DATABASE=%WSL_DATABASE%) else SET DATABASE=Multi_Source
if defined WSL_USER (SET USER=%WSL_USER%) else SET USER=
if defined WSL_PWD (SET SQLCMDPASSWORD=!WSL_PWD!) else SET SQLCMDPASSWORD=
if defined WSL_WORKDIR (SET WORKDIR=%WSL_WORKDIR%) else goto LABEL_FILE_DEFAULT
if defined WSL_SEQUENCE (SET SEQUENCE=%WSL_SEQUENCE%) else goto LABEL_FILE_DEFAULT
SET FILECTL=%WORKDIR%\wsl%LOAD_TABLE%%SEQUENCE%.ctl
SET FILELOG=%WORKDIR%\wsl%LOAD_TABLE%%SEQUENCE%.log
SET FILEAUD=%WORKDIR%\wsl%LOAD_TABLE%%SEQUENCE%.aud
SET FILEFMT=%WORKDIR%\wsl%LOAD_TABLE%%SEQUENCE%.fmt
goto LABEL_WAIT
  
```

Option to save stored procedures in the same database as the associated table (SQL Server)

RED users now have the option of creating procedures in the same database as the table object. The **Connection > Target Settings** window now provides an option to enable RED users to store procedures and table objects, together in the same SQL Server target database.

This compliments the RED Multi Database feature which provides users with the capability to distribute table objects across multiple SQL Server databases.



Support for script based custom update processing of tables in custom database targets

RED users now have the option of using host scripts for the custom update routine of tables residing in custom databases. This provides an alternative to the SQL block update processing method and with the introduction of extensible host script support, RED users can define host scripts in their preferred scripting language, e.g. Python, Perl, PowerShell, etc.

The screenshot shows the configuration window for a 'Stage Table stage_budget'. The window has a sidebar on the left with options: Properties (selected), Storage, Override Create DDL, Extended Properties, and Notes. The main area contains the following fields and controls:

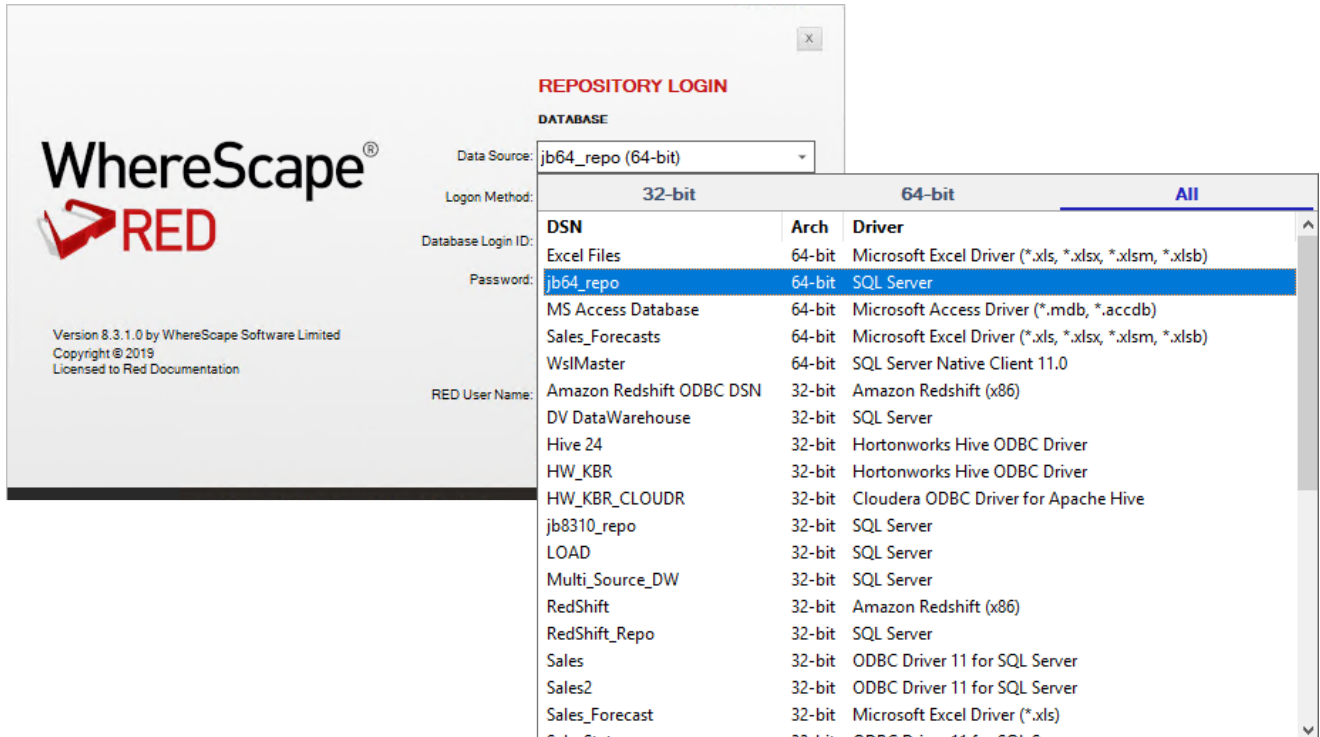
- Table Name:** stage_budget
- Unique Short Name:** stage_budget (maximum 22 characters)
- Table Type:** Stage
- Description:** (empty text area)
- Update Type:** Script (dropdown menu is open, showing Procedure and Script options)
- Update Script:** (empty text area)
- Template:** To Be Selected
- Custom Type:** Script (dropdown menu)
- Custom Script:** (None) (dropdown menu)
- Rebuild** and **Regenerate** buttons are present next to both the Update Script and Custom Script fields.
- Timestamps:** Metadata Structure (2018-08-01 15:16:41.253), Database (empty), Database Altered: (empty)
- OK**, **Cancel**, and **Help** buttons are at the bottom right.

Migrated RED to 64-bit application

WhereScape RED is now a 64-bit application which enables RED users to leverage 64 bit ODBC drivers natively.

RED still supports 32 ODBC DSN's where a 64 bit driver is not available which is achieved with a unique ODBC bridge. Relevant screens with ODBC DNS entry in RED, Setup Administrator and SQL Admin have been updated with a new architecture selection window, in addition to the DSN name.

For RED users who are using PowerShell scripts, the RED PowerShell script type has been configured to run 32bit PowerShell so any scripts dependent on 32bit ODBC DNS's are not impacted after an upgrade.



Migrating RED Data Warehouse Systems from 32-bit to 64-bit

Customers upgrading from RED versions prior to RED 8.3.1.0 can progressively migrate to a 64-bit architecture. RED 8.3.1.0 is a 64-bit application but includes features so that upgrading customers can connect to the RED repository, target connections and source connections using 32-bit ODBC DSNs and drivers to reduce the impact during the transition.

WhereScape recommends that customers upgrading from earlier versions of RED progressively transition to 64-bit DSNs and database tools where available, initially in test systems. This will ensure the best performance for all interaction with databases where 64-bit drivers are available.

The following steps can be performed to transition to 64-bit. WhereScape recommends that these are carried out progressively with intermediate testing:

Migrate the metadata connection to a 64-bit ODBC DSN

1. Ensure that RED client machines and schedulers have the required 64-bit database drivers installed and a 64-bit DSN defined.
2. Open the metadata connection properties screen in RED and update the DSN to the 64-bit one defined above.

Migrate the target connection(s) to a 64-bit ODBC DSN

1. Ensure that RED client machines and schedulers have the required 64-bit database drivers installed and a 64-bit DSN defined.
2. Open each target connection properties screen in RED and update the DSN to the 64-bit one defined above.

Migrate the source connection(s) to a 64-bit ODBC DSN

1. Ensure that RED client machines and schedulers have the required 64-bit database drivers installed and a 64-bit DSN defined.
2. Open each source connection properties screen in RED and update the DSN to the 64-bit one defined above.

Migrate to 64-bit SSIS loads & exports (if used)

1. In **Tools > Options > Code Generation > General**, set SSIS Architecture to 64-bit
2. For every connection that is used for SSIS load/export:
 - I. Make sure the existing SSIS connection string is **compatible** with 64-bit OLEDB driver. Otherwise rebuild SSIS connection string using the 64-bit OLEDB.
 - II. WhereScape recommends that any legacy 32-bit SSIS connection string is preserved in the notes of the connection, should it be required to revert back to 32-bit SSIS as RED 8.3.1.0's connection generator will build 64-bit compatible strings.

Migrate to 64-bit PowerShell (if used)

Upgraded templates and host-scripts for PowerShell host scripts are calling 32-bit PowerShell for continuity in behavior. To transition to 64-bit PowerShell requires the following:

1. Define a 64-bit PowerShell host-script language if one does not already exist:
 - I. Open Tools > Host Script Languages > Maintain Host Script Languages
 - II. Select the PowerShell (32-bit) entry and click Copy.
 - III. Change the reference to 32 bit to 64 bit in the name and description and select OK.
2. Change the template type of PowerShell templates to 64-bit PowerShell.
3. Either
 - I. Regenerate the PowerShell host scripts; or
 - II. Change the type of each PowerShell host script to 64-bit PowerShell.

Migrate Oracle scheduler to 64-bit Direct Path Load (if used)

1. Install the Oracle 64-bit client on your RED client machines and schedulers.
2. In Setup Administrator from the scheduler maintenance screen select configure for the required scheduler and update the "Direct Path or ODBC" option from "Direct Path Load -32 bit" to "Direct Path Load - 64 bit".

Recommendation

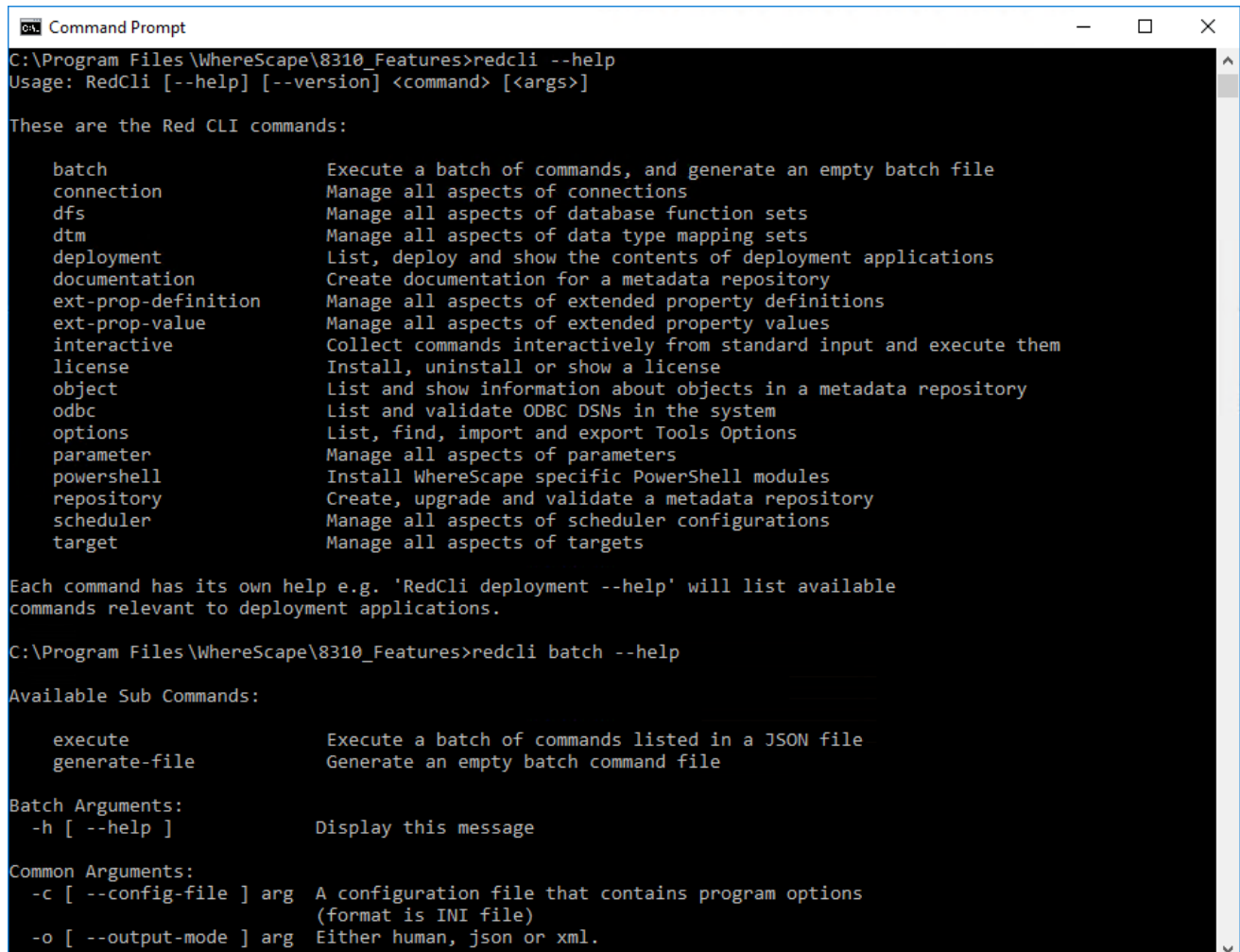
WhereScape advises against using both 32-bit and 64-bit ODBC DSN's and utilities for the same RED connections. Examples of the complications this can lead to are as follows:

1. PowerShell scripts configured as 64-bit PowerShell can only access 64-bit ODBC DSNs and 32-bit PowerShell scripts can only access 32-bit ODBC DSNs.
2. When the metadata connection is configured as 64-bit, the user must choose the 64-bit ODBC DSN on the login screen.

New dedicated command-line interface (beta)

WhereScape RED now provides a dedicated command line interface called **REDCLI** which is a new executable shipped with RED 8.3.1.0.

The REDCLI tool provides more functionality, improved help and improved logging and error handling features compared to the existing command line options in RED.



```
Command Prompt
C:\Program Files\WhereScape\8310_Features>redcli --help
Usage: RedCli [--help] [--version] <command> [<args>]

These are the Red CLI commands:

  batch           Execute a batch of commands, and generate an empty batch file
  connection      Manage all aspects of connections
  dfs             Manage all aspects of database function sets
  dtm            Manage all aspects of data type mapping sets
  deployment      List, deploy and show the contents of deployment applications
  documentation   Create documentation for a metadata repository
  ext-prop-definition Manage all aspects of extended property definitions
  ext-prop-value  Manage all aspects of extended property values
  interactive     Collect commands interactively from standard input and execute them
  license        Install, uninstall or show a license
  object         List and show information about objects in a metadata repository
  odbc           List and validate ODBC DSNs in the system
  options        List, find, import and export Tools Options
  parameter      Manage all aspects of parameters
  powershell    Install WhereScape specific PowerShell modules
  repository     Create, upgrade and validate a metadata repository
  scheduler      Manage all aspects of scheduler configurations
  target        Manage all aspects of targets

Each command has its own help e.g. 'RedCli deployment --help' will list available
commands relevant to deployment applications.

C:\Program Files\WhereScape\8310_Features>redcli batch --help

Available Sub Commands:

  execute           Execute a batch of commands listed in a JSON file
  generate-file     Generate an empty batch command file

Batch Arguments:
-h [ --help ]      Display this message

Common Arguments:
-c [ --config-file ] arg A configuration file that contains program options
                       (format is INI file)
-o [ --output-mode ] arg Either human, json or xml.
```

Important Messages when Upgrading from Earlier Versions

When **Upgrading** from previous versions of RED, it is necessary to update each RED metadata repository to complete the upgrade. This is done by completing a **validate and recompile of all metadata procedures** in WhereScape Administrator.

Notes

If upgrading from a previous version:

1. Please ensure you also upgrade the WhereScape scheduler at the same time. Details for this process are outlined in the WhereScape RED Installation Guide—Chapter 12 (Upgrading WhereScape RED) and Chapter 16 (Scheduler Installation and Configuration).
2. Please review and action all the previous version-specific **Important Messages** below, that are relevant for your RED Upgrade.

Important Messages when upgrading from 8.2.1.1 or earlier

- A new metadata service attribute for the DSN architecture has been added in the RED 8.3.1.0 release. Any existing templates that include authentication to the RED repository must be updated to include this attribute, if the RED repository is migrated to a 64 bit ODBC DSN (if the attribute is not defined, then a 32-bit architecture is assumed).
For example: [WslMetadataServiceClient.Architecture]::_64bit
- Related to the above change, WhereScape recommends that customers using PowerShell templates provided by WhereScape defer their migration to 64-bit PowerShell, until they have received updated enablement packs from their WhereScape account team.
This does not impact their ability to update to RED 8.3.1.0 but customers using database targets such as Snowflake are advised to remain on 32-bit initially.
- A new option has been added to the **Tools > Options > Global Naming Conventions** menu to control whether special characters in source table columns for load objects are replaced with underscore characters. This is useful when source column names contain spaces or hyphens. This option is turned ON by default.
Customers that have source columns containing special characters which are required to be retained in the load table column name (e.g. accented characters) must turn OFF this feature.
Please refer to the section Managing Characters in Column Names in the RED online help for further details.
- The **Unix** and **Linux Scheduler scripts for Oracle, Teradata** have been altered and will need to be applied manually.

Important Messages when upgrading from 8.1.1.0 or earlier

- Teradata customers upgrading from RED versions prior to RED 8.0.1.0 please be aware that later versions of Setup Administrator have functionality to test the RED metadata tables' primary indexes. When sub-optimal primary indexes are detected Setup Administrator creates a copy of the affected table with the recommended primary index, copies the data to the new table and finally removes the old table. Please note that sufficient free space in the metadata database is required to temporarily duplicate the largest metadata table that requires migration. Also any custom statistics on these tables will need to be reapplied.
- WhereScape from the RED 8.2.1.1 version have added certification for the following metadata and target databases:
 - Oracle 12C Release 2
 - Teradata 16.20
 - Microsoft SQL Server 2017

- Cube and Cube Virtual objects are to be deprecated in a subsequent release. Cube objects must be migrated to OLAP Cube objects.
- Microsoft is deprecating support for their Microsoft OLE Driver for Oracle. WhereScape recommends that customers currently using this software migrate to the Oracle OLE Driver.
- WhereScape recommends that you use an Oracle or SQL Server metadata repository and the Windows Scheduler, if you wish to use Custom database targets.
- WhereScape wish to advise customers that work is underway to migrate RED to a 64-bit application over the next 12 months. While the transition is planned to minimize the impact to customers, there may be a requirement to transition to 64-bit ODBC data sources, as part of the upgrade path for this future release of WhereScape RED. No changes are required in the interim. More details will be made available closer to the time the work is completed.

Important Messages when upgrading from 8.0.1.0 or earlier

- SQL Server customers taking advantage of the multiple database support feature are recommended to apply three part naming in their references to SQL Server tables. For example, in a custom procedure please refer to a data warehouse table using the format `<database name>.<schema name>.<table name>`. This will offset the impact of different users or machines having different default databases set.
- Customers using custom database targets to support RedShift or Snowflake are advised to contact their WhereScape representative for information on taking advantage of RED's enhanced custom database support features.
- The Data Vault hash key functions for Teradata and Oracle repositories have been changed in the templates (wsl_teradata_utility_dv and wsl_oracle_utility_dv). Data Vault customers running on Teradata or Oracle who were using these templates from the RED 6.9.1.0 release are advised to retain that version of the template, unless they migrate any key generated using the previous hash key function.
- The Windows and the UNIX/Linux generated Load and Export scripts for Teradata have been updated to use the new environment variables for identifying the TDPID, the user name and the password to connect to the metadata repository, the target database and the source database for Loads and Exports.
Please refer to the section Script Environment Variables in the RED online help for more information.

Important Messages when upgrading from 6.9.1.0 or earlier

- The **Linux Scheduler scripts for Oracle, Teradata and DB2** have been altered and will need to be applied manually.

Important Messages when upgrading from 6.8.7.0 or earlier

- In RED, File and Script-based loads from Windows connections creates a format file for the BULK INSERT operation in the Work Directory of the Windows Connection. This only applies when loading into an SQL Server target. This directory must be accessible to both the machine running SQL Server and the machine running the WhereScape RED Scheduler. Unless these are always the same machine, a UNC path or mapped network path will be required.
- **Legacy hub, link and satellite** objects, created in RED 6.8.7.0 or earlier are still supported in subsequent releases. However, they do not utilize the Data Vault enhancements introduced in release 6.9.1.0.

Important Messages when upgrading from 6.8.6.0 or 6.8.6.1 or earlier

- Teradata 13.10 is no longer supported as a metadata repository/target from RED release, 6.8.7.0.

- SQL 2005 will no longer be supported as a metadata repository/target from RED release, 6.8.7.0. This is in line with Microsoft no longer providing extended support for SQL 2005 from April 12, 2016: <https://www.microsoft.com/en/server-cloud/products/sql-server-2005/>
- The SQL Block statement terminator has been changed from ';' to <EOS> from 6.8.6.2 onwards. If you have existing SQL Blocks which rely on ';' as the statement terminator you can change the default back to ';' in Tools>Options>Code Generation.
- Analysis Services connections running in Multi-dimensional mode have a new setting named SSAS Client Version, which enables users to target a specific version of the Analysis Services client run-time. If the SSAS Client Version is not explicitly set, RED will default to a setting of 2012.
- The existing template engine and the old Hive and PDW templates have been replaced with new versions. Any user created templates will need to be redone in the new language. Refer to the Templates chapter in the respective User Guide (chapter 23 for RED; chapter 24 for Teradata)
- License keys issued for version 6.8.6.1 allowing Custom targets or Custom object types are no longer accepted; you will require a new license key from WhereScape.
- If you have created objects stored on Tabular databases in version 6.8.6.0 and wish to Recreate the object(s), you should run **Relationships > Generate Relationships** on each object after upgrading RED. This only needs to be completed once before Recreating the object. See significant New Features and Improvements for more information.

Important Messages when upgrading from 6.8.5.0 or earlier

- Users with Export objects that use double quote character as an enclosing character will need to open and re-save the Properties for each Export Object.
- Customers using cursor based update procedures on SQL Server, Oracle and DB2: Note that we have changed the calls to procedures/functions get_<DIM_NAME>_key within the updated procedure generation to named notation.
- Changes were made to the WhereScape RED Target Licenses and customers with those licenses will need to have their licenses re-issued. Please contact your WhereScape Sales Representative or email sales@wherescape.com.
- APL users: All APL XML functionality has been migrated into Setup Administrator, including importing models from WhereScape 3D.
- The RED Generated Documentation is now using different images with different sizing. The format of the company_logo.jpg image has also been changed from .jpg to .png. Customers that have created their own banners will need to resize the images according to the table below and also convert the company_logo.jpg image to .png. The new .png files can be found in the WhereScape RED Doclmages installer folder.

Previous Image File	New Image File	Action(s) required
1. company_logo.jpg (528 x 108) has been replaced.	C:\Program Files (x86)\WhereScape\Doclmages\company_logo.png new image size: (408 x 134)	company_logo.jpg needs to be converted to company_logo.png and resized.
2. poweredbyred.png (331 x 100) has been replaced.	C:\Program Files (x86)\WhereScape\Doclmages\poweredbyred.png new image size: (415 x 134)	poweredbyred.png needs to be resized.

Important Messages when upgrading from 6.8.4.0 or earlier

No important messages.

Important Messages when upgrading from 6.8.3.0 or earlier

No important messages.

Important Messages when upgrading from 6.8.2.0 or earlier

- For UNIX/Linux exports and loads in versions after 6.8.2.0, the logic used for defining the SID value for connecting to the repository has been modified. If the ORACLE_SID environment variable is set in your Unix/Linux environment, this will be the variable used. If this environment variable is not set, then the value from the Linux/Unix connection object will be used.

Detailed Changes in RED 8.3.1.0

The following changes have been implemented since Version 8.2.1.1.

Note

Details of changes made in previous versions of RED are available on the <https://www.wherescape.com/support/red-release-notes/> page in the **Support** section.

Database	Jira Ticket	Description
Improvements		
Common	RED-1762	Column transformation editor now allows RED parameters to be applied from a list.
Common	RED-3313	Add the ability to checkout scheduler jobs
Common	RED-4100	Increase the supported script line length able to be processed by the scheduler from 256 to 4000 characters.
Common	RED-4561	Add the ability to include RED parameters in the WHERE clause editor from a list.
Common	RED-6585	Implement new template editor that includes several new features including syntax highlighting.
Teradata	RED-8879	Updated datatype mapping file between Oracle / SQL Server and Teradata.
SQL Server	RED-8945	Add the ability to deploy procedure objects to DW targets (distinct schema/database in the same SQL Server Instance).
Common	RED-9176	Implemented option to cascade table documentation fields to down-stream table.
Common	RED-9200	Implement a command line interface to perform common RED functions
Common	RED-9299	Migrate RED to a 64-bit application
Common	RED-9555	Add a properties maintenance screen for Group objects
Common	RED-9556	Add an Auto Map Columns option in the Maintain Mapping Screen for a source mapping object
Common	RED-9616	Implement solution to allow more Windows scripting languages to be supported
Common	RED-9632	Add projects to the list of available objects in the delete screen for building a RED application.
Custom	RED-9659	Add configurable option to all table row counts to be returned when browsing custom database connections
Common	RED-9671	Implement new script editor that includes several new features including syntax highlighting.
Common	RED-9689	Add the ability to regenerate the update procedure for fact and dimension objects.
Custom	RED-9696	Added the ability for the custom update routine to be of type script in addition to type procedure for table objects in custom DB targets.
SQL Server	RED-9700	Update to Sql Server set-fact template to support foreign keys.
Common	RED-9709	Change to Data Vault hash key creation wizard so that change hash key creation is not mandatory
Teradata	RED-9710	Enhance the Teradata file load option only load latest file.

Database	Jira Ticket	Description
Common	RED-9719	Fix a problem where the header of the column properties screen did not update to reflect the current column when switching between columns with the previous/next buttons.
SQL Server	RED-9721	Resolve a case sensitivity issues on SQL Server with metadata procedures ws_job_clear_logs and ws_job_clear_logs_by_date.
Custom	RED-9723	Add support for template based create view DDL statement generation for view aliases.
Common	RED-9741	Resolve a 4000 character limit on join statements introduced with the new table join wizard.
Common	RED-9753	Add support for Unicode values in extended property variables when returned in PowerShell scripts via the metadata service.
Common	RED-9759	Resolve an issue where some target properties for custom connection objects can be cleared while maintaining other table property attributes.
Common	RED-9762	Resolved an issue with write procedure to disk feature in the updated procedure editor
Common	RED-9765	A default template for the code generation of source mapping objects now retained.
Common	RED-9767	Resolved gaps in the auto-versioning of template objects
Common	RED-9801	Corrected the position of the context menu for multiple selected objects in the central pane when more than one screen of objects is selected.
Common	RED-9820	Added functionality to the objects to delete feature for applications to automatically added related objects.
Common	RED-9871	Increased the number of tables that can be processed in the validate table create status report.
SQL Server	RED-9884	Add flag for Sql Server target connections so that new stored procedures are either created in the repository database or in the same target database as the associated table.
SQL Server	RED-9887	Customers building update fact procedures in a target database that access KPI procedures require that the KPI procedure needs to be accessible from the database and schema of the procedure that calls it.
SQL Server	RED-9919	Add attribute for procedure objects in SQL Server so they can be locked in their current target.
Common	RED-9947	Retain procedure comments when a database procedure is compiled manually from the RED procedure editor.
Issues		
SQL Server	RED-9180	Relationship between projects and group can be lost during application deployment.
Common	RED-9667	Added option to either to retain spaces or convert to underscores if a load table is created from a source table with spaces in its table name or column name(s).
Common	RED-9698	Refinement of the workflow to define the source table join as part of rebuilding a procedure.
Oracle, Teradata	RED-9724	Fixed an error with the command line application build workflow affecting Oracle and Teradata repositories.
Common	RED-9730	Fix a fault creating deployment applications if bullet lists are included in the description field.

Database	Jira Ticket	Description
Common	RED-9733	Resolve a display issue in the table join wizard when toggling between natural and alphabetical column ordering on high resolution monitors.
Common	RED-9739	Retain the relationship between a source mapping object and a scheduler task when an update to the source mapping object is deployed in an application.
Custom	RED-9752	Resolve an issue where SQL blocks for custom DB target objects failed to execute via the Windows scheduler.
Common	RED-9776	Resolve an issue with index regeneration affecting objects with automatic indexes and more than one business key column.
Common	RED-9783	Resolved an issue where delete file actions for load objects were not always removing temporary files.
Common	RED-9791	Resolve issue where default load type from a source connection was not always being applied to new load table objects deployed from 3D.
Common	RED-9834	Remediation of an issue with transformation type of load table columns imported from 3D
Common	RED-9846	Resolve a problem introduced in RED 8.2.1.1 where the new table default script template setting of a connection was not always persisted.
Common	RED-9942	Correct a display issue in the source join wizard when joining two tables if the right hand table has more that 15 columns
Oracle	RED-9993	An additional option has been added in Setup Administrator so that Oracle customers using Direct Path loads for their Windows Scheduler can define their scheduler for a 64 bit Oracle client.

Detailed Changes in RED 8.2.1.1

The following changes have been implemented since Version 8.2.1.0.

Note

Details of changes made in previous versions of RED are available on the <https://www.wherescape.com/support/red-release-notes/> page in the **Support** section.

Database	Jira Ticket	Description
Improvements		
Common	RED-9741	Resolved a 4000 character limit on join statements, introduced with the new table join wizard.
Common	RED-9759	Resolved an issue where some target properties for custom connection objects can be cleared while maintaining other table property attributes.
Common	RED-9762	Resolved an issue with write procedure to disk feature in the updated procedure editor.
Common	RED-9765	A default template for the code generation of source mapping objects is now retained.
Issues		
Common	RED-9698	Refinement of the workflow to define the source table join, as part of rebuilding a procedure.
Oracle	RED-9724	Fixed an error with the command line application build workflow, affecting Oracle and Teradata repositories.
Common	RED-9733	Resolved a display issue in the table join wizard, when toggling between natural and alphabetical column ordering on high resolution monitors.
Common	RED-9739	Retain the relationship between a source mapping object and a scheduler task, when an update to the source mapping object is deployed in an application.
Custom	RED-9752	Resolved an issue where SQL blocks for custom DB target objects failed to execute, via the Windows scheduler.
Common	RED-9776	Resolved an issue with index regeneration, affecting objects with automatic indexes and more than one business key column.

Copyright

Copyright © 2019 WhereScape Software Ltd. All rights reserved.

This document may be redistributed in its entirety and in this electronic or printed form only without permission; all other uses of this document and the information it contains require the explicit written permission of WhereScape Software Ltd.

Due to continued product development this information may change without notice. WhereScape Software Ltd does not warrant that this document is error-free.

Trademark

WhereScape and WhereScape RED are trademarks or registered trademarks of WhereScape Software Ltd. Other brands or product names are trademarks or registered trademarks of their respective companies.

WhereScape USA, Inc

1915 NW AmberGlen
Parkway
Suite 400, Beaverton
Oregon 97006
United States
T: 503-466-3979
F: 503-466-3978

WhereScape Europe

45 Brook Drive
Green Park
Reading RG2 6UU
United Kingdom
T: +44-118-914-4509
F: +44-118-914-4508

WhereScape Asia Pte. Ltd

300 Tampines Avenue 5
#09-02 Singapore 529653
T: +65-6679-5728

WhereScape Software Ltd

P.O. Box 56569,
Auckland 1446
12-16 Tapora Street
Quay Park
Auckland 1010, New
Zealand
T: +64-9-358-5678
F: +64-9-358-5679

www.wherescape.com