

Install Guide - SetupWizard - Azure Synapse

WhereScape Enablement Pack for Azure Synapse - RED 10

This is a guide to installing the WhereScape Enablement Pack for Azure Synapse for WhereScape RED10

Table of Contents

- [Prerequisites For PostgreSQL Metadata](#)
 - [Prerequisites For Azure Synapse Target Database](#)
 - [Installation Through Setup Wizard](#)
 - [Upgrade Of Existing Repository](#)
 - [Post Install Steps – Optional](#)
 - [Source Enablement Pack Support](#)
 - [Troubleshooting and Tips](#)
-

Prerequisites For PostgreSQL Metadata

Before you begin the following prerequisites must be met:

- Create Database and ODBC DSN :
 - Supported* version of PostgreSQL (PostgreSQL 12 or higher)
 - A database to house the RED Metadata Repository.
 - A database for the Range Table DB (Optional)
 - A database to house scheduler (Optional)
- Software Installations
 - WhereScape RED10 with valid license key entered and EULA accepted
 - WhereScape Enablement Pack for target database version RED10
- Windows Powershell (64 bit) version 4 or higher
 - To check Windows Powershell Version:
 - Run below command in Windows Powershell

```
Get-Host | Select-Object Version
```

- Run below command in Command Prompt

```
powershell $psversiontable
```

- Run the following command using PowerShell
 - The security protocol TLS 1.0 and 1.1 used by PowerShell to communicate with PowerShell gallery has deprecated and TLS 1.2 has been made mandatory

```
[Net.ServicePointManager]::SecurityProtocol = [Net.ServicePointManager]::  
SecurityProtocol -bor [Net.SecurityProtocolType]::Tls12  
Register-PSRepository -Default -Verbose  
Set-PSRepository -Name "PSGallery" -InstallationPolicy Trusted
```

- Progress bar placeholder info line

```
Install-Module -Name PoshProgressBar -SkipPublisherCheck -Force
```

* : RED supports the following versions for the metadata repository: PostgreSQL 12 or higher

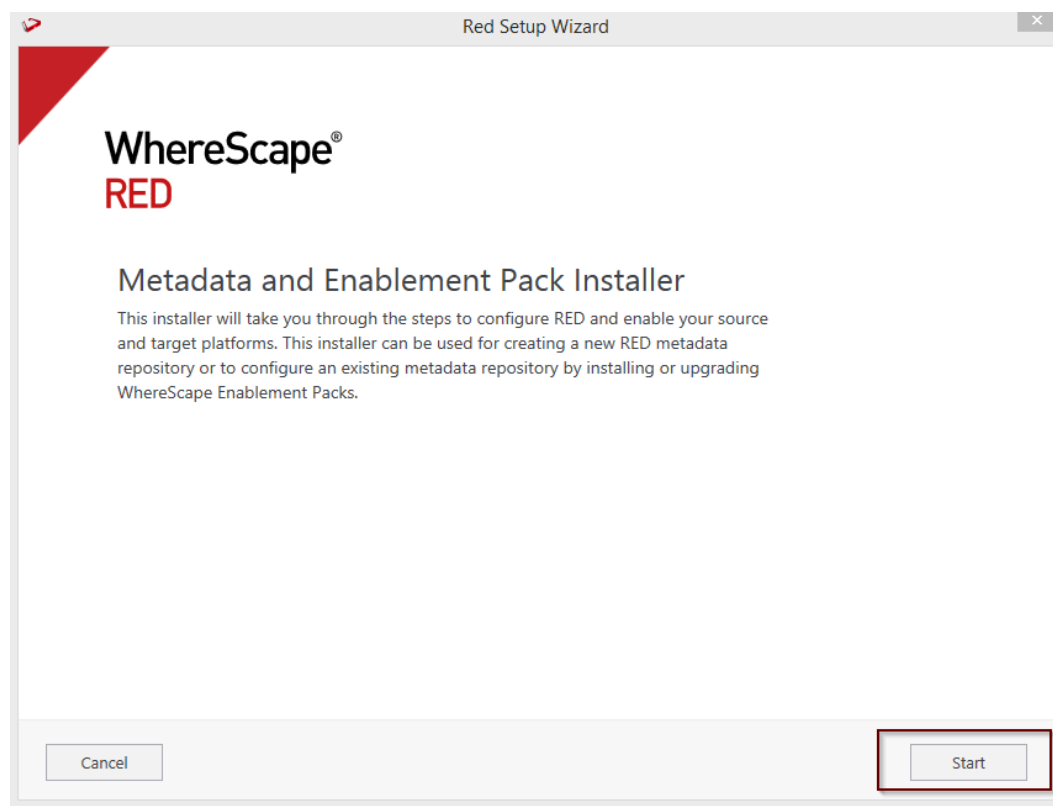
Prerequisites For Azure Synapse Target Database

Before you begin the following prerequisites must be met:

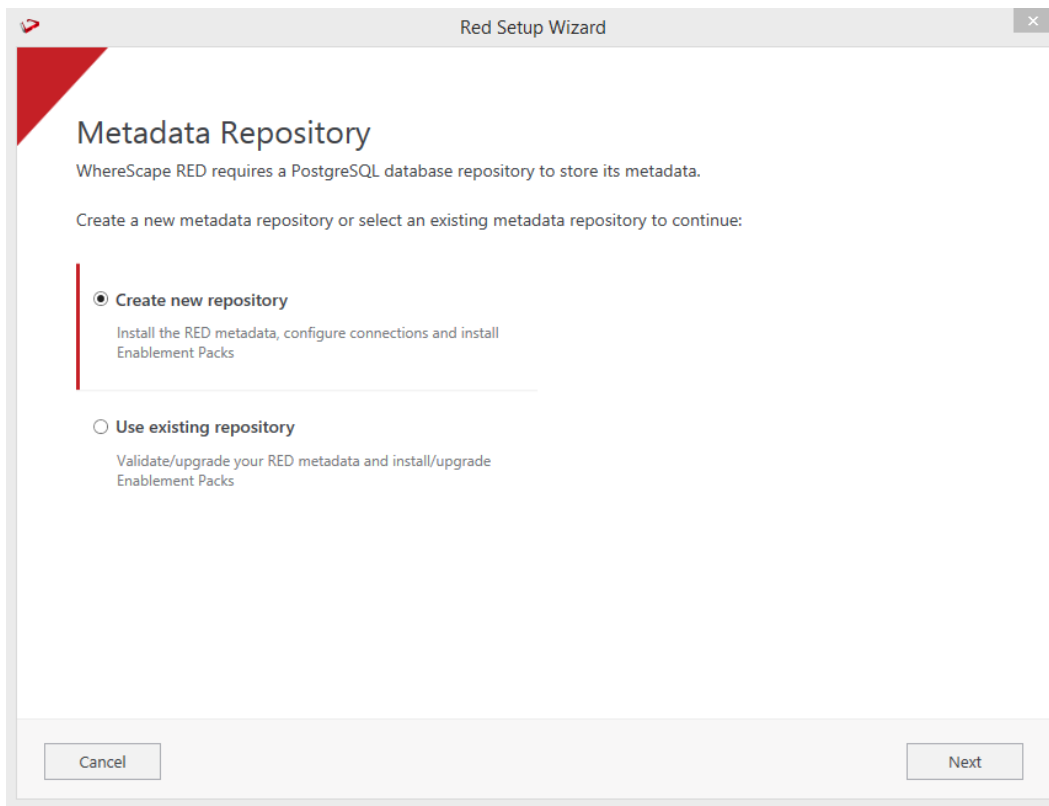
- Create Database and ODBC DSN :
 - Azure Synapse
 - At least one schema available to use as a RED Data Warehouse Target
- [Python 3.8 or higher](#)
 - Select "Add Python 3.8 to PATH" from installation Window
 - Pip Manager Install with command : `python -m pip install --upgrade pip`

Installation Through Setup Wizard

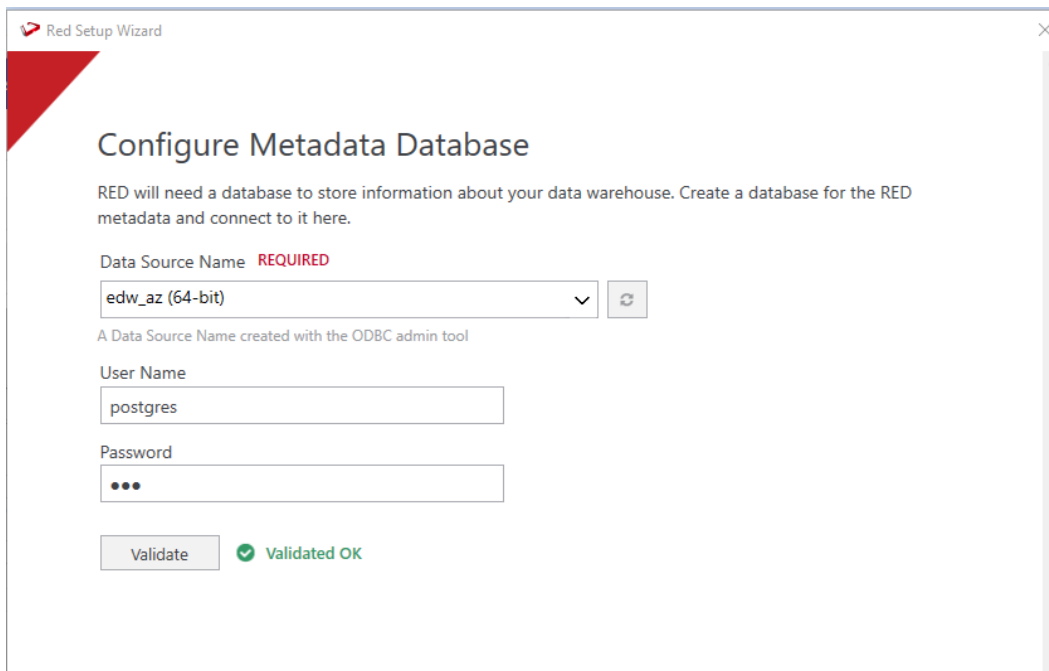
Run Setup Wizard as administrator



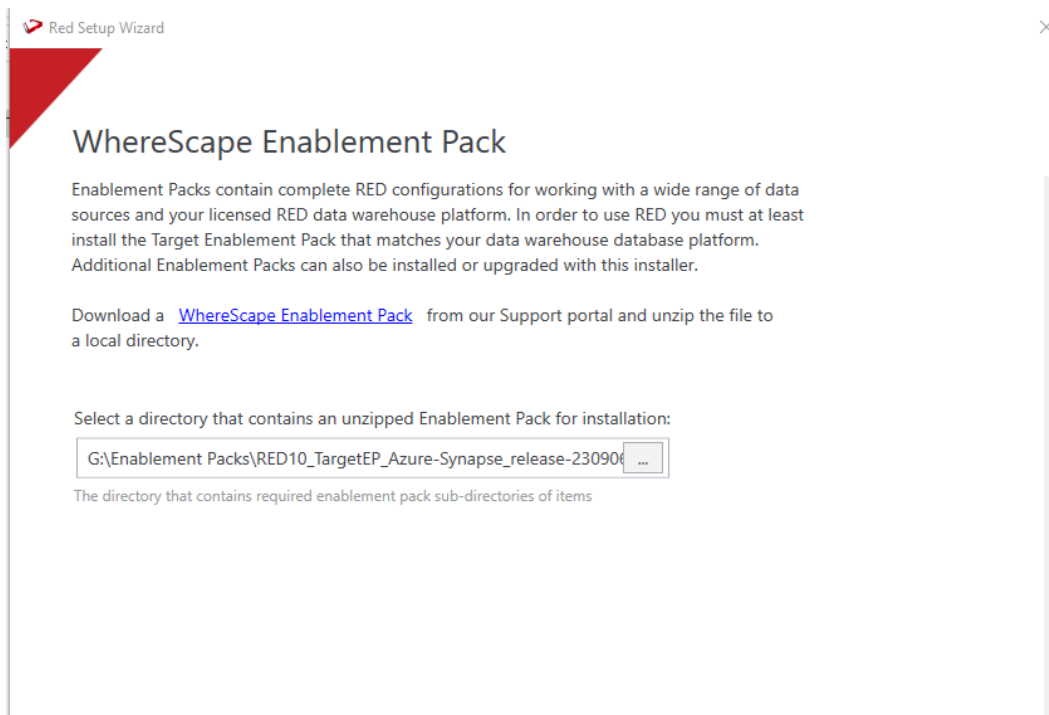
Create new repository or upgrade already existing repository.



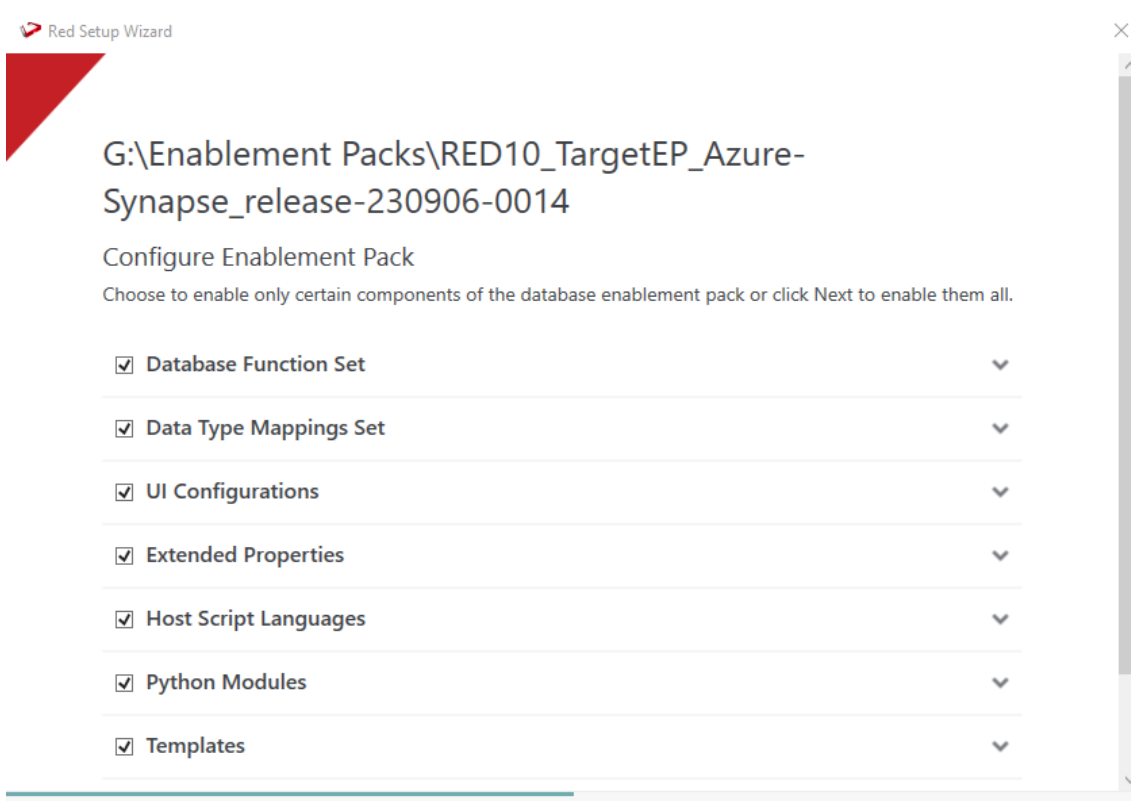
Select the created ODBC DSN, input login details and then select "Validate". Press Next



Select the directory that contains unzipped Enablement Pack for installation. Press Next



Using the check boxed list, include or exclude the components that are to be installed. Press Next



Configure a target connection (example, Data Warehouse) and its target locations. Validate and press ADD.

Red Setup Wizard

Data Warehouse
A unique name that identifies this connection

Data Source Name **REQUIRED**
AzureSynapse (64-bit)

A Data Source Name created with the ODBC admin tool

User Name
dbadmin

Password
●●●●●●●●

Target Storage Locations **REQUIRED**
Existing schema (or database names depending on platform) for object storage

qa_load

qa_stage

qa_edw

When done, press ADD and then Press Next to advance.

Red Setup Wizard

Add Targets

Configure the connection where your data warehouse will live.

Added Targets

Data Warehouse
AzureSynapse

Configure a data source connection (optional) and its target locations. Validate and press ADD. Press Next to advance.

Red Setup Wizard

Add ODBC Sources

Add ODBC data sources now or click 'Next' to skip this step and configure your sources later in RED

Added Sources

Connection Name

A unique name that identifies this connection

Data Source Name

A Data Source Name created with the ODBC admin tool

User Name

Password

Review the installation summary and click Install

Red Setup Wizard

Summary

Metadata Location ^

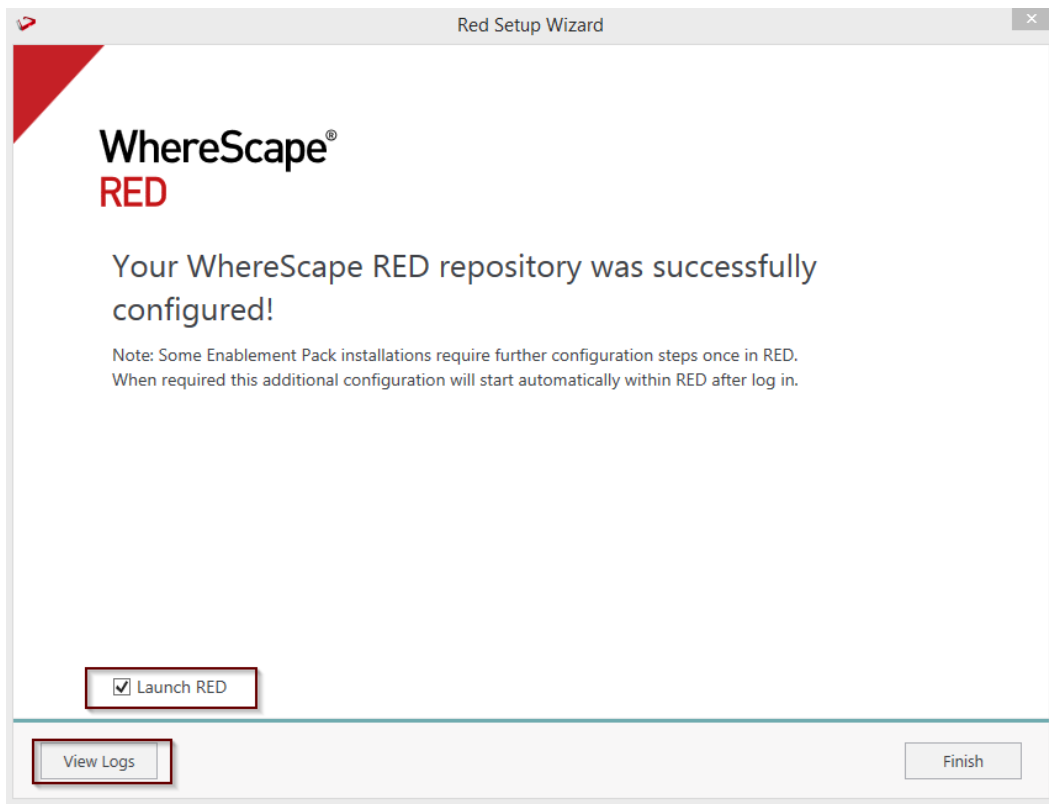
ODBC Data Source: edw_az_0014
 ODBC Database: (empty)
 ODBC User Name: postgres
 RDBMS Type: PostgreSQL

Enablement Pack Directory "G:\Enablement Packs\RED10_TargetEP_Azure-Synapse_release-230906-0014" ^

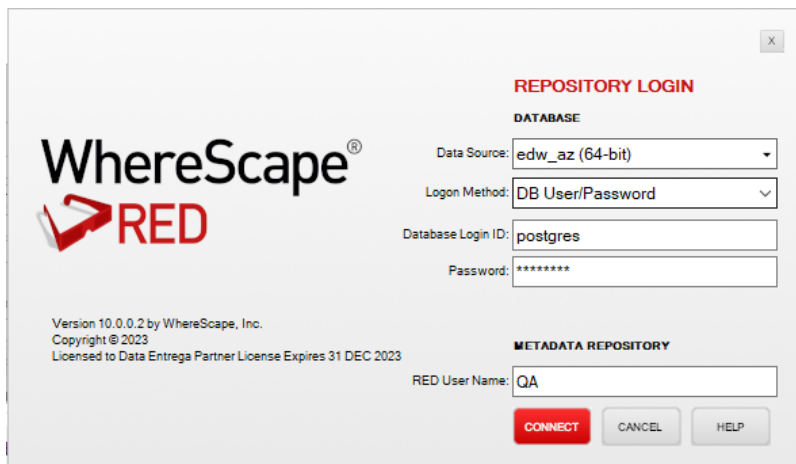
Database Functions Set
 Database Function Sets/Azure SQL DW Function Set.xml (49 KB)

Data Type Mappings Set
 Data Type Mappings/Azure SQL DW from Azure SQL DW.xml (2 KB)
 Data Type Mappings/Azure SQL DW from DB2.xml (2 KB)
 Data Type Mappings/Azure SQL DW from File all Varchars.xml (3 KB)
 Data Type Mappings/Azure SQL DW from File.xml (6 KB)
 Data Type Mappings/Azure SQL DW from Oracle.xml (4 KB)
 Data Type Mappings/Azure SQL DW from PostgreSQL.xml (3 KB)

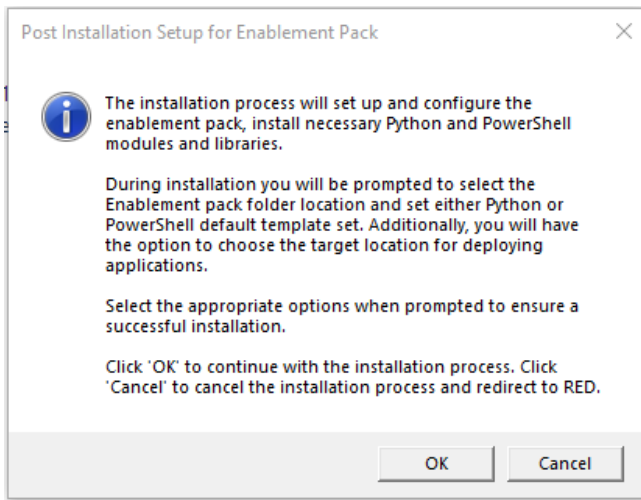
Clicking on the View Logs will take to the installation log. Click on Finish once the installation is completed successfully.



Login to WhereScape RED.

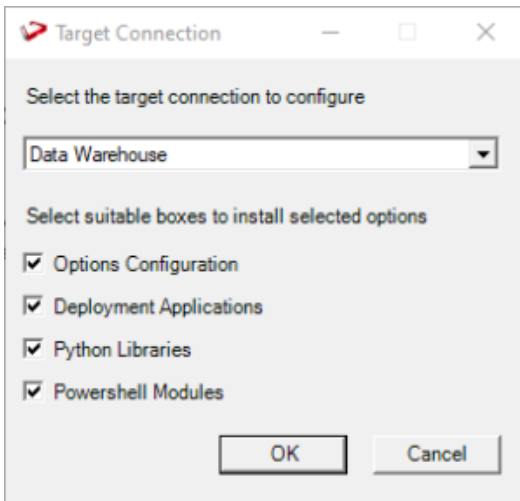


Note: There is a post-install script that will run at the first login to RED10 to complete the post setup wizard installation process. You will be directed to below PowerShell window which will give brief explanation about post installation process.

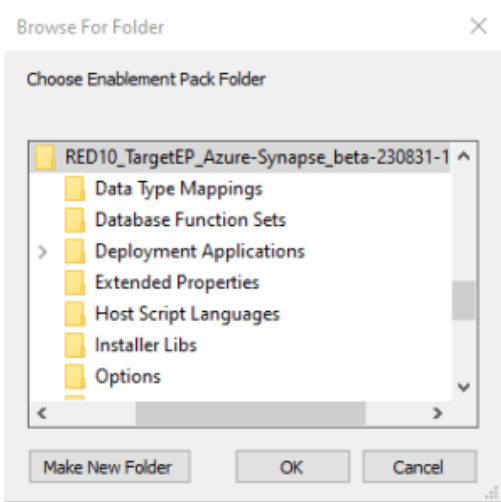


Press OK to start the post installation. If pressed Cancel installation will stop and user will be directed to RED.

The user will be directed to the window below, where they have to select the target connection to be configured. Additionally, by deselecting the provided options, the user can choose not to install a particular option.

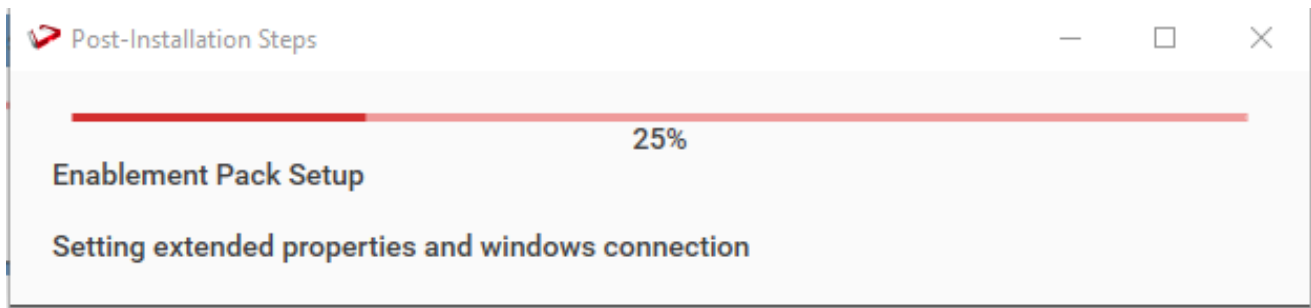


You will be directed to below PowerShell window. Provide the directory that contains unzipped Enablement Pack.

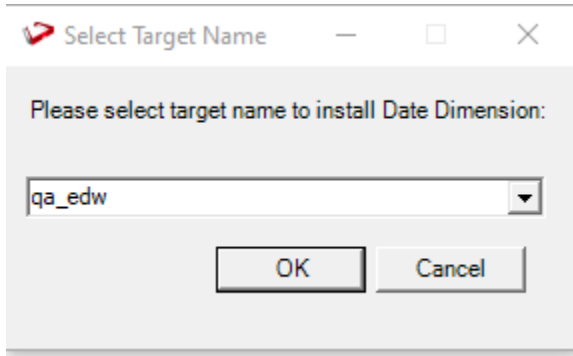


Press OK

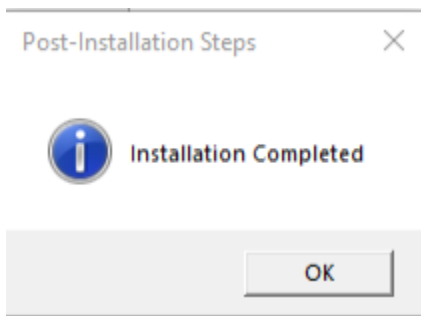
The progress bar will show the post installation progress.



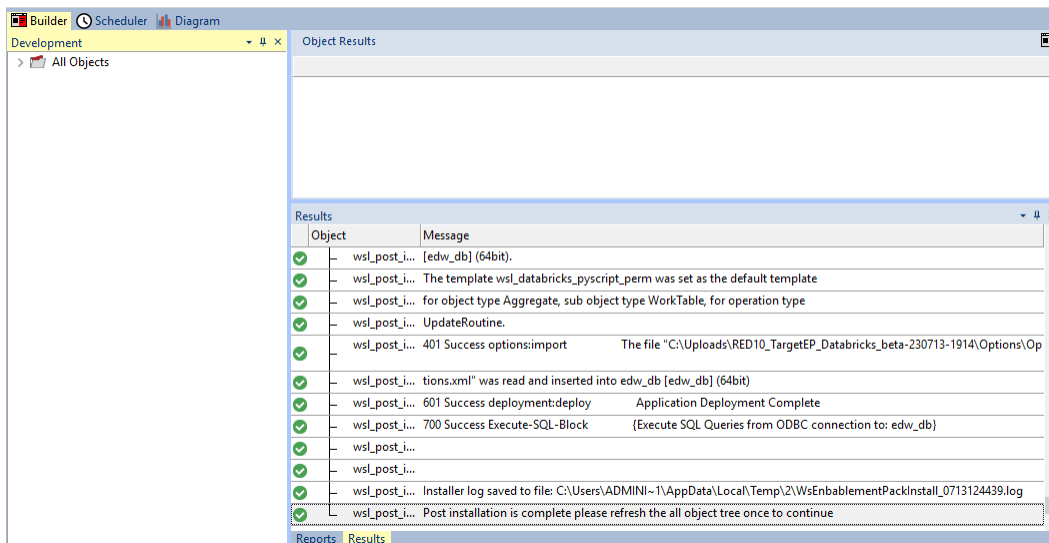
User will have to choose the schema for the target setting that were provided. One pop up will come for setting default target schema for Date Dimension.



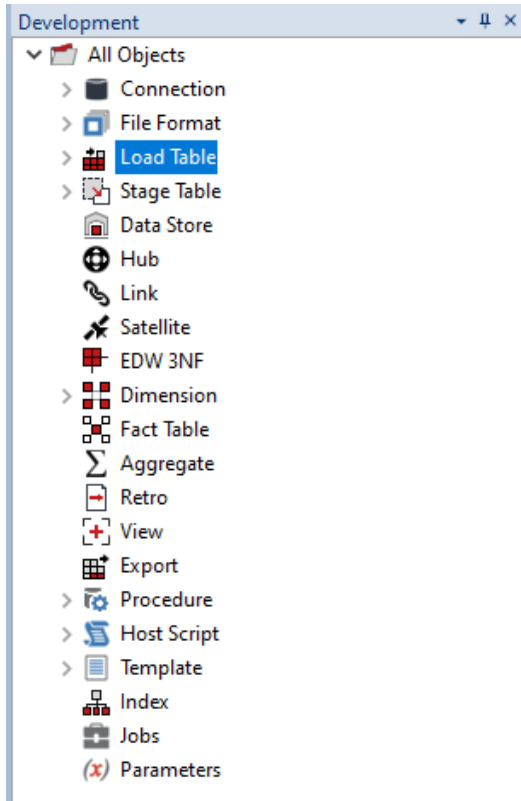
After selecting the target schema progress bar will show the progress for the installation and once it's completed, you will get the below pop up.



After pressing OK RED10 will open automatically.



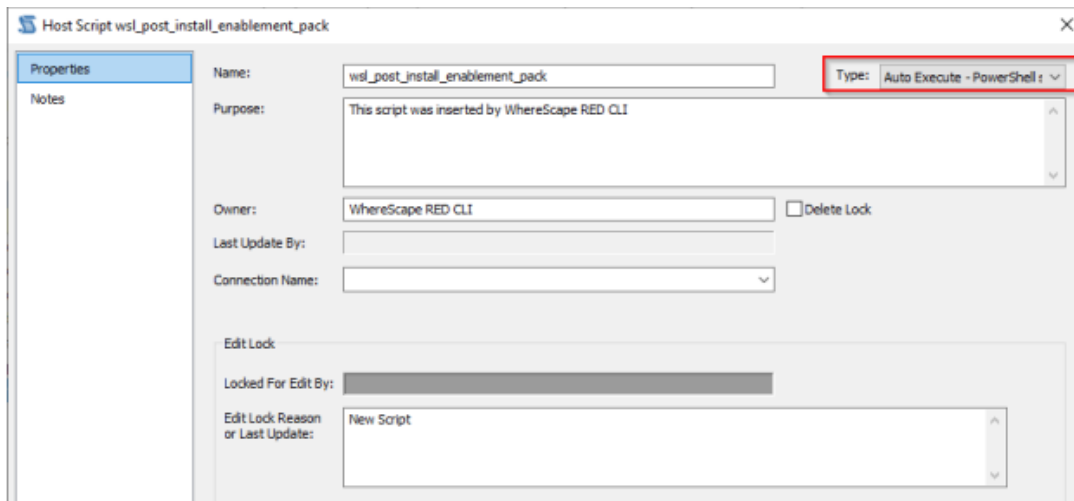
User will need to refresh the All Objects tree once.



Upgrade Of Existing Repository

For upgrade of existing repository

- From host script set script type of `wsl_post_install_enablement_pack` as Auto Execute - PowerShell Script



Important Upgrade Notes

If RED upgrade the repository option is chosen.

This enablement pack will overwrite any existing Source Enablement Pack UI Configs:

Connection UI Config	Load UI Config
Amazon S3	Load From Amazon S3
Azure Data Lake Storage Gen2	Load From Azure Data Lake Storage Gen2
Google Cloud	Load From Google Cloud

To ensure existing Source Enablement Pack connections and associated Load Tables continue to browse and load:

Go into UI Configuration Maintenance in RED prior to installing this Enablement Pack and rename the affected UI Configurations. While the updated Load Template will work with previous Source Enablement Pack's we recommend moving these previous versions of Load Tables to newly created Parser based connections following this install. The earlier versions of the Source Enablement Pack will be deprecated following this release.

Post Install Steps – Optional

If you used the script Setup Wizard for installation then the following optional post install steps are available.

Configure Connections

These connections added that will optionally require your attention:

1. Connection: Data Warehouse ('Azure Synapse')- This connection was setup as per parameters provided in Setup Wizard
 - a. open it's properties and check extended properties tab, set it up for **Blob Storage Account, Blob Storage Access Key, Blob Storage Container ,Blob Endpoint ,Blob Storage Data Source and Azure SQL DW Connection String**
2. Connection: 'Database Source System' - this connection was setup as an example source connection,
 - a. open its properties and set it up for a source DB in your environment
 - b. or you can remove it if not required

Enable Script Launcher Toolbar

There are a number of stand-alone scripts which provide some features such as "Ranged Loading", these scripts have been added to the Script Launcher menu but you will need to enable the menu toolbar item to see them.

To enable the Script Launcher menu in RED: Select menu item 'Home->Script Launcher'

Source Enablement Pack Support

Source Pack Name	Supported By Azure Synapse	Supported Features	Prerequisites
Cloud File Parser 1. Amazon S3 2. Azure Data Lake Storage Gen2 3. Google Cloud Storage	1. CSV 2. Excel 3. JSON 4. XML 5. AVRO 6. ORC 7. PARQUET	Bulk load	Refer to Windows Parser Guide
Windows Parser	1. CSV 2. Excel 3. JSON 4. XML 5. AVRO 6. ORC 7. PARQUET	Load Template, Source Properties will have option to select parser type to load the files.	Refer to Windows Parser Guide

Troubleshooting and Tips

Run As Administrator

Press the Windows Key on your keyboard and start typing cmd.exe, when the cmd.exe icon shows up in the search list right click it to bring up the context menu, select "Run As Administrator"

Now you have an admin prompt navigate to to the folder where you have unpacked your WhereScape Red Enablement Pack to using the 'cd' command:

```
C:\Windows\system32> cd <full path to the unpacked folder>
```

Run batch (.bat) scripts from the administrator prompt by simply typing the name at the prompt and hit enter, for example:

```
C:\temp\EnablementPack>install_WslPowershell_Modules.bat
```

Run Powershell (.ps1) scripts from the administrator prompt by typing the Powershell run script command, for example:

```
C:\temp\EnablementPack>Powershell -ExecutionPolicy Bypass -File .\Setup_Enablement_Pack.ps1
```

Notes: In the event you can not bypass the Powershell execution policy due to group policies you can instead try "-ExecutionPolicy RemoteSigned" which should allow unsigned local scripts.

Windows Powershell Script Execution

On some systems Windows Powershell script execution is disabled by default. There are a number of workarounds for this which can be found by searching the term "Powershell Execution Policy".

Here is the most common workaround which WhereScape suggests, which does not permanently change the execution rights:

Start a Windows CMD prompt as Administrator, change directory to your script directory and run the WhereScape Powershell scripts with this command:

- cmd:>Powershell -ExecutionPolicy Bypass -File .\<script_file_name.ps1>

Restarting failed scripts

Some of the setup scripts will track each step and output the step number when there is a failure. To restart from the failed step (or to skip the step) provide the parameter "-startAtStep <step number>" to the script.

Example:

```
Powershell -ExecutionPolicy Bypass -File .\<script_file_name.ps1> -startAtStep 123
```

Tip: to avoid having to provide all the parameters again you can copy the full command line with parameters from the first "INFO" message from the beginning of the console output.

Python requirements for offline install

Additionally to the base Python installation being required, the WhereScape Python Template set also requires certain additional Python libraries. The install scripts uses the PIP (package manager) to download these libraries, however for offline installs you will need to install the required libraries yourself.

Required Python libraries/add-ons:

- pywin32-ctypes
- python-tds
- pywin32
- glob2
- gzip-reader
- regex
- pyodbc

If a valid RED installation can not be found

If you have RED 10.x or higher installed but the script (Setup_Enablement_Pack.ps1) fails to find it on you system then you are most likely running PowerShell (x86) version which does not show installed 64 bit apps by default. Please open a 64 bit version of Powershell instead and re-run the script.