

WhereScape[®] RED

Release Notes

Version 10.0.0.3 | December 2023

Table of Contents

WhereScape RED 10.0.0.3 Release Update	3
Downloading version 10.0.0.3	3
Significant New Features and Improvements in RED 10	4
Unified WhereScape Metadata platform	4
New Cross-Platform Scheduler and Dashboard	4
New Look and Feel.....	4
Improved Setup and Configuration.....	5
Other Enhancements.....	5
Customer Improvements	6
Migrating from Earlier Versions of RED	6
WhereScape 3D Compatibility.....	6
Important Messages when Upgrading	7
Important message when upgrading from RED 10.0.0.2 or earlier (RED 10 only)	7
Detailed Changes	8
Changes in RED 10.0.0.0.....	8
Changes in RED 10.0.0.1	9
Changes in RED 10.0.0.2.....	9
Changes in RED 10.0.0.3.....	9

WhereScape RED 10.0.0.3 Release Update

WhereScape is pleased to announce that WhereScape RED 10.0.0.3 is now available.

Downloading version 10.0.0.3

Login to <https://www.wherescape.com> and download RED 10.0.0.3 from the downloads page in the **Support** section.

Kind Regards,
WhereScape RED Team

Significant New Features and Improvements in RED 10

Unified WhereScape Metadata platform

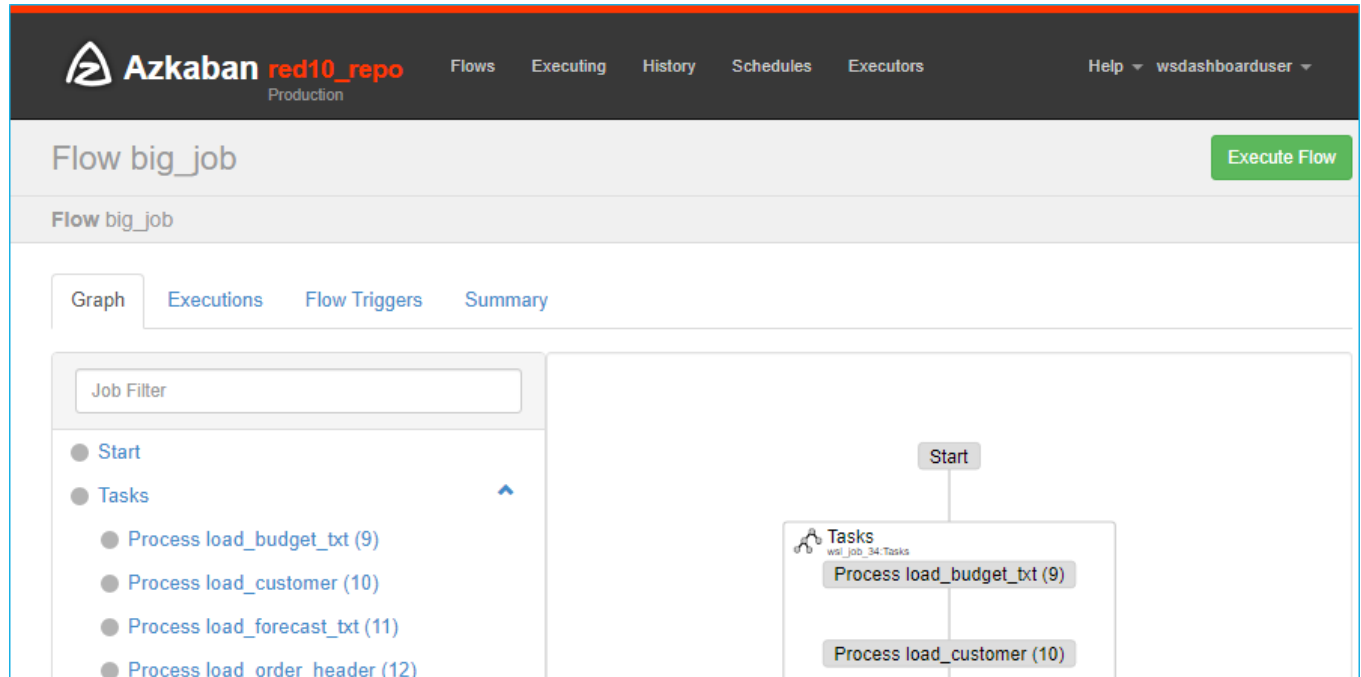
RED 10 supports PostgreSQL database only for the RED metadata, this unifies the metadata platforms across the WhereScape product family bringing RED in line with WhereScape 3D and the new WhereScape scheduler.

New Cross-Platform Scheduler and Dashboard

RED 10 introduces a new external cross-platform scheduler for orchestration of data warehouse workloads. The new scheduler is a customized version of Azkaban, a distributed Workflow Manager, implemented at LinkedIn. WhereScape's customized version includes support for both Linux and Windows job execution and utilizes PostgreSQL as the metadata platform.

RED's move towards an external scheduler is the first step in decoupling the RED development engine from orchestration and paves the way for other scheduler integrations in the future. This release of RED introduces Action Processing Scripts (generated by templates) which implement the task actions available to each object via the external scheduler.

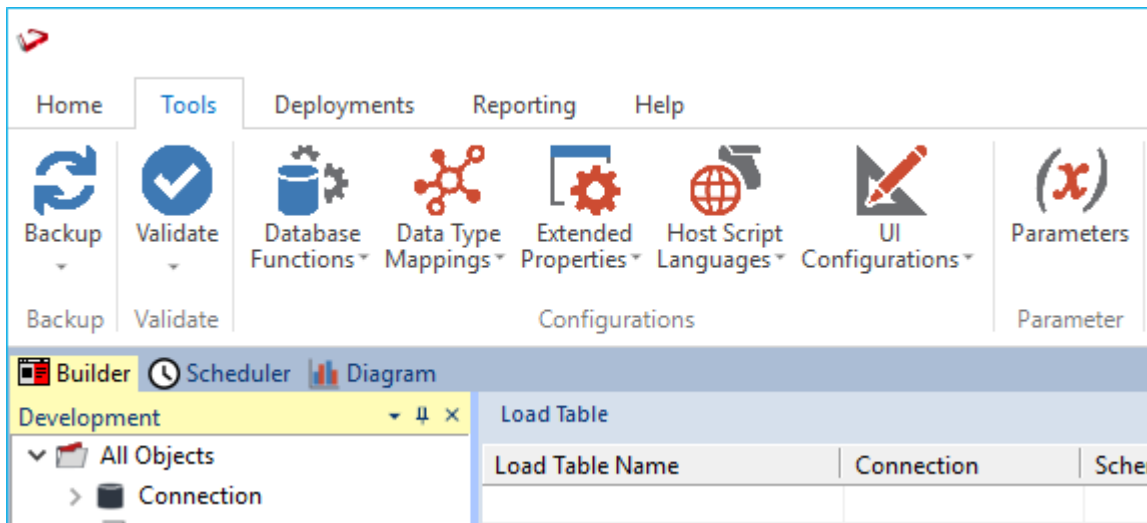
The new scheduler comes with a web-based dashboard for job visualization, monitoring and operational activities.



The screenshot shows the Azkaban web dashboard interface. At the top, there is a navigation bar with the Azkaban logo and 'red10_repo Production' text. The navigation menu includes 'Flows', 'Executing', 'History', 'Schedules', 'Executors', and 'Help'. The user is logged in as 'wsdashboarduser'. The main content area displays the 'Flow big_job' with an 'Execute Flow' button. Below this, there are tabs for 'Graph', 'Executions', 'Flow Triggers', and 'Summary'. The 'Graph' tab is active, showing a workflow diagram. On the left, there is a 'Job Filter' input field and a list of tasks: 'Start', 'Process load_budget_txt (9)', 'Process load_customer (10)', 'Process load_forecast_txt (11)', and 'Process load_order_header (12)'. The workflow diagram shows a 'Start' node connected to a 'Tasks' node, which contains two sub-tasks: 'Process load_budget_txt (9)' and 'Process load_customer (10)'.

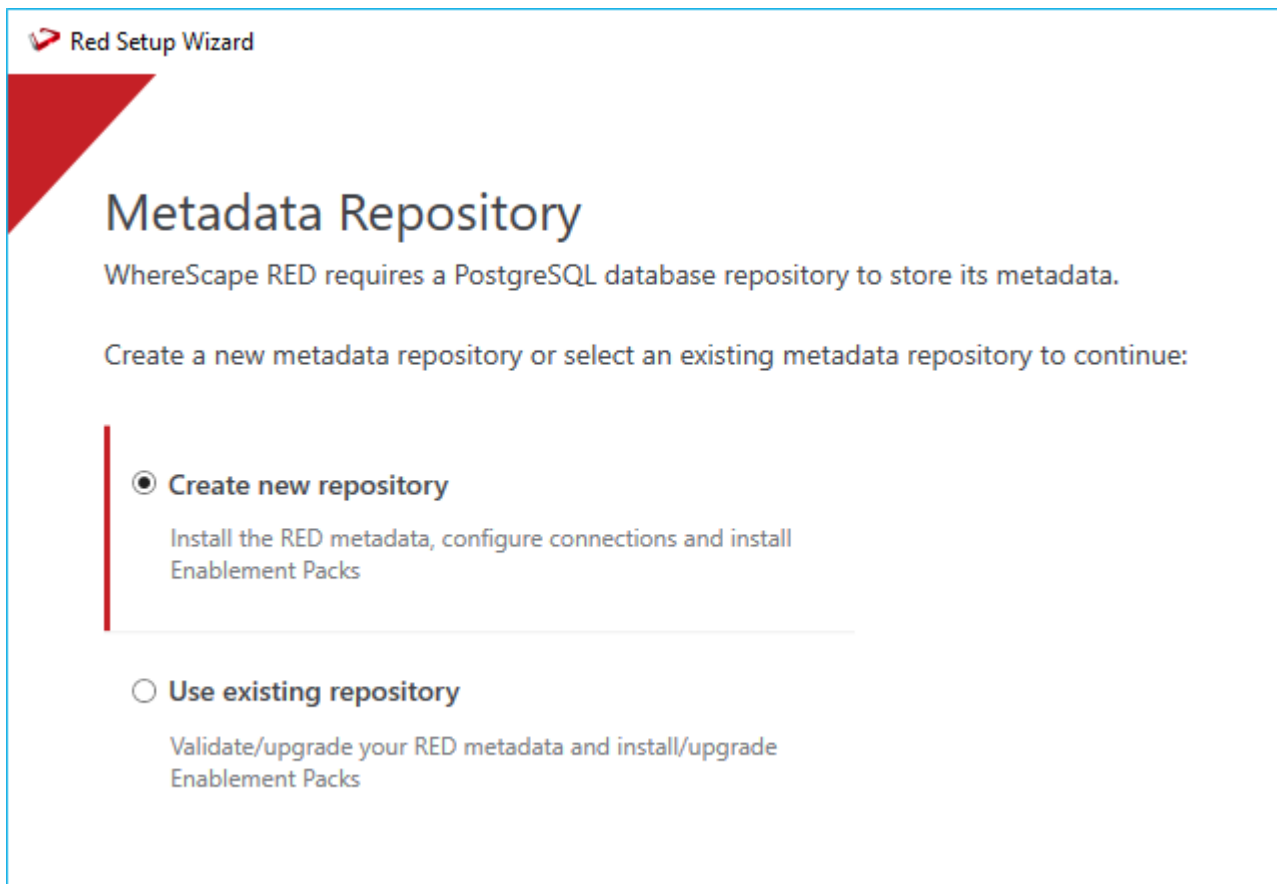
New Look and Feel

This version comes with a modern look and feel. This is the first phase in a number of UI and UX enhancements planned for RED. This includes a new ribbon style menu bar, improved menu groupings and a new icon set.



Improved Setup and Configuration

RED 10 introduces the RED Setup Wizard, a new tool for RED setup and configuration. This tool provides a GUI based installer for the RED Metadata and WhereScape Enablement Packs in one easy to follow wizard.



Other Enhancements

- Extensible Index Validation - new customizable target index validation sql
- DDL length limits increased
- Object name limits increased

- Column name limits increased
- Scheduler Action Processing Scripts
- Moved java based components to Open JDK 11

Customer Improvements

This release also includes the customer enhancements and support fixes listed in the [Detailed Changes](#) page.

Migrating from Earlier Versions of RED

Note that due to both the new PostgreSQL metadata and the external Azkaban based Scheduler there is no upgrade path from earlier versions of RED directly to RED 10. If you are an existing customer of WhereScape RED on another metadata platform then migration tooling will become available soon after this release along with the rollout of RED 10 compatible Enablement Packs for each Target platform.

WhereScape 3D Compatibility

This release of RED 10.0.0.3 is compatible with WhereScape 3D 8.6.9.1 versions and up for 3D exports to RED.

Important Messages when Upgrading

Important message when upgrading from RED 10.0.0.2 or earlier (RED 10 only)

The default Azkaban integration publish script has had improvements and requires a manual upgrade in RED. See detailed changes sections for 10.0.0.2 and 10.0.0.3 versions relating to the publish script.

Procedure to upgrade:

1. In RED, open the Azkaban integration script in the script editor. This script is named `wsl_scheduler_publish` under your Host Script objects.
2. Open the updated file in notepad located in the RED installation directory under “<RED install directory>\Administrator\Scripts\wsl_scheduler_publish.ps1”
3. Copy the contents of the updated script into the RED script editor to overwrite the existing script and save.

Additional notes:

- It is a good idea to version the script before the manual upgrade process, right click on the script in RED and select ‘Version Control->New Version’
- If you have made any customizations to your `wsl_scheduler_publish` script these will need to be merged manually with the updated script changes.
- Any changes to the Azkaban integration scripts will only take effect for new jobs or when editing an existing job causing a re-publish to Azkaban.

Detailed Changes

Changes in RED 10.0.0.0

The following changes have been implemented since 10.0.0.0.

Jira Ticket	Description
Improvements	
RED-1896	Increased the limit to the number of characters supported in the transformation text of column.
RED-9565	Added an item in Backup menu "Save Host Scripts to Disk" that saves all scripts in the metadata to disk.
RED-10063	Only rebuild indexes when index definition (business key) has changed as part of rebuild procedure workflow.
RED-10118	Added support for Unix scripts for processing non-load objects.
RED-10205	Pebble template engine updated to version 3.1.5.
RED-10248	Increased the maximum character length of the following objects in RED: Object names up to 256, Job/Task Names up to 256, Procedure/Script/Template lines up to 4000.
RED-10276	Extended "search for a string" function to allow searching in Templates.
RED-10600	Added new RedCli option to regenerate auto-generated indexes for an object.
RED-10801	Increased DDL limit for User Defined Views.
RED-11065	Added simplified output mode for RedCli commands for ease of automation named JSON-MINIMAL.
RED-11066	RedCli now outputs the full log file path to the automatically generated log. Useful for log purging and general debugging.
RED-11142	Improvements to DSS_LOAD_SOURCE transformation string when using Extensible Source Connections.
RED-11144	Added a new scope to Extended Property visibility for Extensible Source Connections.
RED-11158	You can now start RED with command line parameters to automatically populate login screen.
RED-11244	Relaxed licensed object check for RedCli connection set-default-template commands to reduce Enablement Pack installation complexity.
RED-11247	Increased RED Column Name limit from 64 to 256 chars.
RED-11254	Extended Properties can now be scoped to any of the inbuilt database types regardless of license.
RED-11287	RedCli import-modules now works for WS Python Common Modules.
RED-11290	RedCli deployment logging improved.
RED-11314	RedCli Template Import operations now default the database type to 'Custom' when not specified and cannot be derived.
RED-11315	RedCli Template Import operations now also parse the database type from the template header for automatic assignment on import.
RED-11319	RED can now have scripts assigned for Auto Execution after RED login.
RED-11321	RedCli can now install an enablement pack via a single command.
RED-11336	The Java components in the RED installation have moved from Oracle JDK 8 to Open JDK 11.
RED-11527	RedCli and RED now accept metadata credential arguments as environment variables.

Jira Ticket	Description
Issues	
RED-4861	Increased the limit of DDL size on SQL and PostgreSQL metadata from 16,000 to 64,000 chars.
RED-10049	Fixed deployment issue from WhereScape 3D when column names containing 'XX' would have names modified during deployment.
RED-10640	Resolved issue using StringUtils function in templates.
RED-10792	Improved 3D Export of documentation subjects to RED.
RED-11094	Export Object Properties UI Improvements.
RED-11253	Fixed issue in the script editor when saving script lines ending with a backslash character '\\.
RED-11288	Added RedCli set-default-template commands for Post Load Routine and Export Scripts.
RED-11317	Fixed an issue with RedCli powershell install-module command.
RED-11318	RedCli Options Export\\Import improved.
RED-11385	Provided a way to override the SQL for the Table Exists check for Objects on Custom Targets.

Changes in RED 10.0.0.1

The following changes have been implemented since 10.0.0.0.

Jira Ticket	Description
Issues	
RED-11572	Fixed RedCli deployment issue when deploying UI Config field values to existing objects.

Changes in RED 10.0.0.2

The following changes have been implemented since 10.0.0.1.

Jira Ticket	Description
Issues	
RED-11611	Resolved issue with deployment of Data Vault Stage tables where there were metadata errors while inserting the hash key column rows.
RED-11610	Resolved RedCli deployment DML/DDDL logging issue where view objects were not producing logs.
RED-11573	Resolved deployment issue with UI Configuration values metadata leaving orphaned metadata rows after deployment.
RED-11590	Updated the Azkaban publish script so that disabled tasks are now correctly skipped by Azkaban.
RED-11588	Fixed syntax issue in exception handling code of Azkaban publish script for running interactive jobs.

Changes in RED 10.0.0.3

The following changes have been implemented since 10.0.0.2.

Jira Ticket	Description
Issues	
RED-11618	Job publish script improvement enabling publish to out-of-sync Azkaban metadata.

Jira Ticket	Description
RED-11672	Job publish script improved logging and debugging.
RED-11549	Extended Action Script generation during deployment to Source Mappings.
RED-11624	Source tab fields are now transferred correctly from 3D export of Loads from Extensible Source Connections.
RED-11644	Fixed issue with very wide tables where load script generation during deployment from 3D could fail.
RED-11709	Fixed issue in Documentation Generation occurring in PostgreSQL 15+ repositories.
RED-11700	Fixed issue in Export Properties screen occurring in PostgreSQL 15+ repositories.
RED-11613	RedCli 'script import-file' and 'script import-directory' actions now allow changing the script type of existing scripts when the '--force' switch is used. Improves EP upgrades.
RED-11570	Fixed issue with Extensible Source Connection Scripted Browse workflow where the display name was used for schema name leading to insert failures.

Copyright

Copyright © 2023 WhereScape, Inc.. All rights reserved.

This document may be redistributed in its entirety and in this electronic or printed form only without permission; all other uses of this document and the information it contains require the explicit written permission of WhereScape, Inc..

Due to continued product development this information may change without notice. WhereScape, Inc. does not warrant that this document is error-free.

Trademark

WhereScape and WhereScape RED are trademarks or registered trademarks of WhereScape, Inc.. Other brands or product names are trademarks or registered trademarks of their respective companies.

WhereScape, Inc.

10801 N Mopac Expressway
Building 1, Suite 100
Austin, Texas 78759

www.wherescape.com