

WhereScape®

# WhereScape® RED

## Release Notes

Version 10.1.0.4 | February 2025

---

## Table of Contents

<b>WhereScape RED 10.1.0.4 Release Update</b> .....	<b>3</b>
Downloading version 10.1.0.4 .....	3
<b>Significant New Features and Improvements in this Release</b> .....	<b>4</b>
Customizable Object Subtypes .....	4
Scheduler Improvements.....	4
Customer Improvements .....	5
Migrating from Earlier Versions of RED .....	5
WhereScape 3D Compatibility.....	5
<b>Important Messages when Upgrading from Earlier Versions</b> .....	<b>6</b>
Important Messages when upgrading to 10.1.0.4 .....	6
<b>Detailed Changes</b> .....	<b>7</b>
Changes in 10.1.0.0 .....	7
Changes in 10.1.0.1 .....	8
Changes in 10.1.0.2 .....	8
Changes in 10.1.0.3 .....	8
Changes in 10.1.0.4 .....	8

## WhereScape RED 10.1.0.4 Release Update

WhereScape is pleased to announce that WhereScape RED 10.1.0.4 is now available.

### Downloading version 10.1.0.4

Go to <https://www1.wherescape.com> to see available product versions and documentation.

Login to the [WhereScape Support Portal](#) to access downloads.

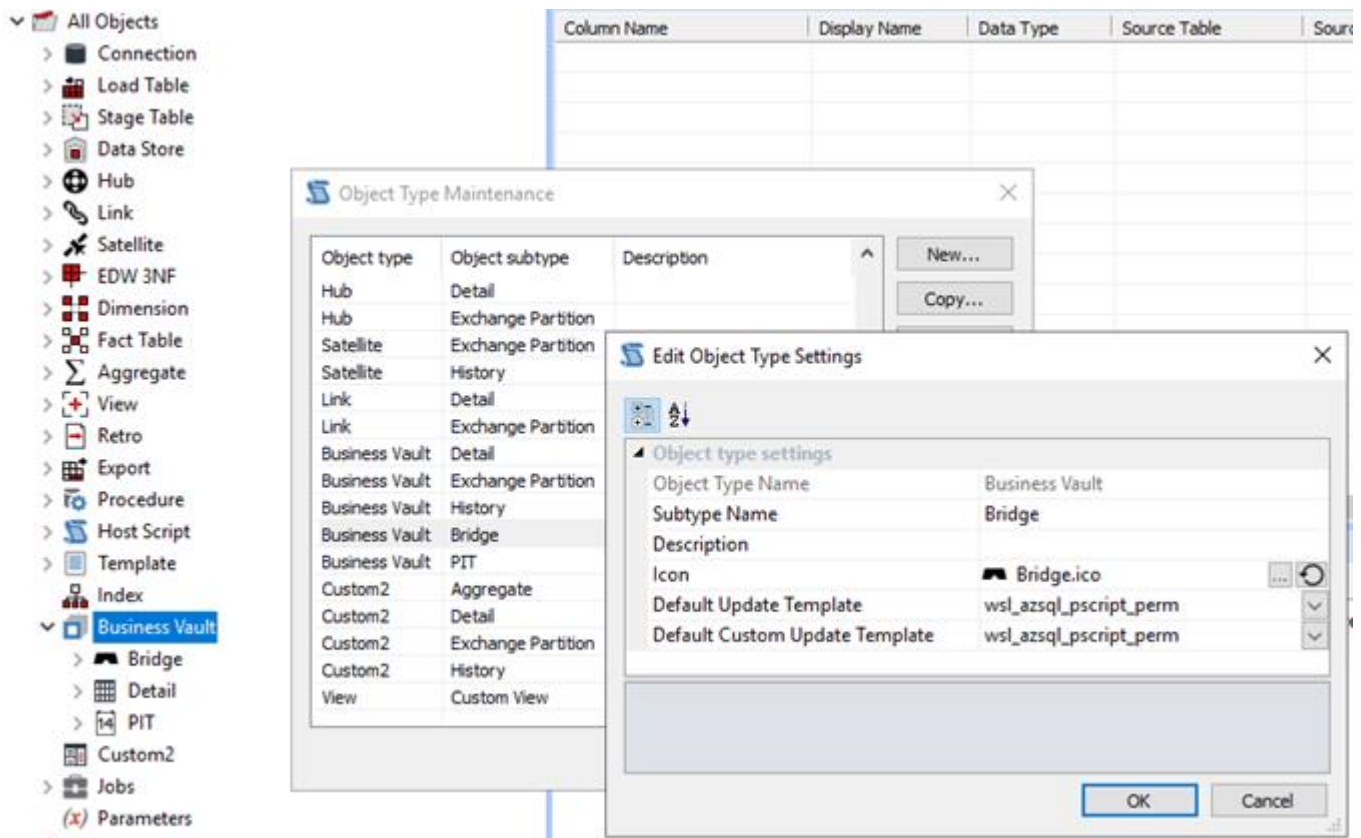
Kind Regards,  
WhereScape RED Team

## Significant New Features and Improvements in this Release

### Customizable Object Subtypes

Configure your Object Subtypes based on the existing object types in RED with the following configurable settings:

- Name
- Icon to appear in object trees and documentation
- Default Routine Templates for automated code generation
- Appearance in object trees



This feature is beneficial to customers wanting to differentiate between more object types and control the automation aspects based on those types. It's particularly useful in the case of Data Vaults where there are many object subtypes which can be configured in 3D but don't currently have a dedicated object type mapping in RED such as PIT and Bridge tables. This feature also allows setting specific icons for each object subtype which improves both productivity and look and feel.

### Scheduler Improvements

Azkaban core and the RED plugin for Azkaban have been improved in this release to enhance the workflows when dealing with abnormal job runs.

#### Improved Azkaban/RED synchronization

Azkaban to RED metadata synchronization on aborted jobs has been improved, now when canceling jobs directly from Azkaban the RED job metadata is updated to match the external job state. This removes the need to run additional tasks via Azkaban to have the job removed from the 'Running' state in RED and allows further remedial tasks to be performed on the job run, as required, immediately following an abort.

### **Added support for cleaning up child processes on job cancellations**

When a job is canceled directly from Azkaban an optional cleanup script is now triggered automatically by the presence of a host script object in RED matching a specific naming convention. This is beneficial to users who need to kill long running or abnormal jobs in the scheduler but ensure that the underlying child processes for the job are also killed to prevent further unwanted transactions on the source and targets involved in the task.

Job cancellations will now execute the RED metadata host scripts, if present, named:

- 'wsl\_scheduler\_job\_kill\_linux' on Linux
- 'wsl\_scheduler\_job\_kill\_win' on Windows

### **Improved job restart workflow**

When manually marking a failed task as 'completed' in the RED Scheduler tab for an aborted job, then a restart on this job will now set the job run to 'Succeeded', provided there were no other failures in the remaining tasks to execute. This is useful when resolving a failed task externally and then later continuing the remaining tasks in the job, so that the job then appears as a successful completion in the metadata.

## Customer Improvements

This release also includes the customer enhancements and support fixes listed in the [Detailed Changes](#) page

## Migrating from Earlier Versions of RED

Note that due to both the new PostgreSQL metadata and the external Azkaban based Scheduler there is no upgrade path from earlier versions of RED directly to RED 10. If you are an existing customer of WhereScape RED on another metadata platform, then migration tooling will become available soon after this release along with the rollout of procedure compatible Enablement Packs for selected Target platforms.

## WhereScape 3D Compatibility

This release of RED 10.1.0.4 is compatible with WhereScape 3D 8.6.9.1 versions and up for 3D exports to RED but it is recommended to use the latest version 9.0.2.1 of 3D to provide all feature capabilities.

## Important Messages when Upgrading from Earlier Versions

When Upgrading from previous versions of RED, the RED metadata, Azkaban metadata or both may need upgrading. For RED the requirement to upgrade is enforced at login when there is an application version mismatch, but it is best practice to validate and upgrade the metadata after every RED application upgrade. Refer to the Upgrading WhereScape RED section of the RED User Guide for more details.

If there are important updates to the Azkaban metadata these will be indicated in the important upgrade messages that follow. Refer to the Upgrading Azkaban section of the RED User Guide for more details.

### Important Messages when upgrading to 10.1.0.4

#### Upgrading RED

Version 10.1.0.0 has potentially breaking changes for upgraded repositories and therefore upgrades should be tested thoroughly before upgrading production environments. The potential issues after the upgrade are the following:

- Default Routine Template settings might be lost. For object types other than Load and Export these settings have been moved from target connections to the Object Subtypes. During the metadata upgrade process, the first target-enabled connection found is used to populate the new settings under Object Subtypes. If you have multiple target-enabled connections in your repository, then the optimal connection may not be used for the settings transfer. Ensure to check the Object Subtypes maintenance wizard after an upgrade to this version and set any missing/incorrect default routine templates as required. Note: this configuration can be exported from test to production once resolved in test.
- [TABLEOWNER] an \$OBJECT\$ token expansion no longer expands empty schemas to an additional '.' in table names. This means from this release onwards you must specify the actual schema name in target location settings when schema is required on your platform. Ensure to check your target location settings for target connections prior to upgrading and populate the schema field, if required.

#### Upgrading Azkaban

Version 10.1.0.1 has changes to the Azkaban components; therefore, all Azkaban Web Servers and Executor Servers need upgrading as well as the Azkaban metadata.

Upgrading Azkaban is currently a manual process, please refer to the RED User guide for detailed upgrade instructions.

Change history for Azkaban components requiring upgrades (changes are cumulative):

- 10.1.0.1: Log4j components upgraded to log4j2 to resolve logging issues.
- 10.1.0.0: Improvements when canceling running jobs. Component upgrades.
- 10.0.1.0: Added procedure support and long host names fix.
- 10.0.0.0: First release.

#### Upgrading Scheduler Integration Scripts

The default scheduler integration publish script has improved and can optionally be upgraded in RED. Refer to the RED user guide for detailed upgrade instructions.

Change history for `wsl_scheduler_publish` script requiring optional manual upgrade (changes are cumulative):

- 10.0.0.3: Support for republishing when existing job not found. Improved logging.
- 10.0.0.2: Added support for disabled tasks.
- 10.0.0.0: First release

# Detailed Changes

## Changes in 10.1.0.0

The following changes have been implemented since 10.0.1.0.

Jira Ticket	Description
<b>Improvements</b>	
RED-11635	Added support for case sensitive filters in the scheduler job name filter.
RED-11634	Enhancements to the project object maintenance dialog when accessed via the ribbon.
RED-11636	Updated reports menu on the builder screen.
RED-11633	Upgrades to this version will use the first target connection found to transfer Routine Default Templates settings to the new Object-Subtypes feature.
RED-11626	New Object-Subtypes feature added which enables the addition of customizable object subtypes with their own default routine templates.
RED-11639	Improved the killing of a job via Azkaban such that the RED metadata for the job is notified of the run state.
RED-11638	Killing a job via Azkaban now allows the optional execution of a cleanup script which enables the opportunity to kill any child processes; if required.
RED-11772	Token replacement for [TABLEOWNER].[table_name] and \$OBJECT\$ now allow 2-part-naming expansion when only the database name is used in the target platform (such as Teradata), this means if the schema field is left blank then the above tokens no longer expand to include an additional period for the schema in the fully qualified object name.
<b>Issues</b>	
RED-11775	Fixed an issue when generating documentation for specific projects.
RED-11708	RedCli can now be forced to accept the license agreement for unattended installs.
RED-10313	Resolved an issue where 3D deployment to RED was doubling single quotes in extended property values.
RED-11757	Restarting a job after manually marking a failed task as complete in RED now sets the correct final job completion status.
RED-11681	Resolved a deployment issue for source mapping objects with where clauses exceeding 4000 chars.
RED-11701	Fixed an issue in drag'n'drop from data warehouse tables when source column datatypes contain quotes.
RED-11555	When exporting to RED from 3D all generated routines are now correctly associated with the groups of the parent object.
RED-11647	The Maintain Hash Keys wizard now preserves the column position order of existing Hash Key columns.
RED-11743	Upgrade 3 <sup>rd</sup> -party components in Pebble project
RED-11742	Upgrade 3 <sup>rd</sup> -party components in Azkaban project (including log4j)
RED-11741	Upgrade 3 <sup>rd</sup> -party components in Template Engine project

## Changes in 10.1.0.1

The following changes have been implemented since 10.1.0.0.

Jira Ticket	Description
<b>Issues and Improvements</b>	
RED-11851	Resolved issue with log4j upgrade where logging level was not being honored.
RED-11849	Upgrades to reported vulnerabilities in 3rd party libraries.
RED-11859	Fixed issue with deployment of Data Vault Stage tables from 3D to RED where Hash Key Sources metadata wasn't deployed.
RED-11857	Resolved Revert to Version functionality showing the wrong dialog.
RED-11866	Fixed issue in applications deployment for object deletions.
RED-11848	Resolved 3D to RED deployment issue in new Object Subtypes feature.

## Changes in 10.1.0.2

The following changes have been implemented since 10.1.0.1.

Jira Ticket	Description
<b>Issues</b>	
RED-11907	Resolved a digital signing issue which affected the RED 10.1.0.1 installer.
RED-11896	Resolved issue with generating routines via templates where the default template could not be determined in some cases affecting RedCli.exe and RedDeploy.exe
RED-11886	Fixed issue with object subtypes import process where default routine templates would not be applied in some scenarios affecting RedClie.exe and RED UI
RED-11786	Resolved "Cannot retrieve default template" error occurring after upgrading to 10.1.0.0 release in some situations affecting RED UI

## Changes in 10.1.0.3

The following changes have been implemented since 10.1.0.2.

Jira Ticket	Description
<b>Issues</b>	
RED-12008	Improved the performance of starting up RED on large repositories with many Groups and Projects.

## Changes in 10.1.0.4

The following changes have been implemented since 10.1.0.3.

Jira Ticket	Description
<b>Issues</b>	
RED-12070	Fixed a performance issue when running scripts from the RED UI in large repositories.
RED-11974	Fixed issue where interactive processing via scripts could fail with "<work_dir> contains an incorrect path" in some repositories.



## Copyright

Copyright © 2025 WhereScape, Inc.. All rights reserved.

This document may be redistributed in its entirety and in this electronic or printed form only without permission; all other uses of this document and the information it contains require the explicit written permission of WhereScape, Inc..

Due to continued product development this information may change without notice. WhereScape, Inc. does not warrant that this document is error-free.

## Trademark

WhereScape and WhereScape RED are trademarks or registered trademarks of WhereScape, Inc.. Other brands or product names are trademarks or registered trademarks of their respective companies.

### **WhereScape, Inc.**

10801 N Mopac Expressway  
Building 1, Suite 100  
Austin, Texas 78759

[www.wherescape.com](http://www.wherescape.com)