

Install Guide - SetupWizard - Oracle - RED 10.4

WhereScape Enablement Pack for Oracle - RED 10.4

This is a guide to installing the WhereScape Enablement Pack for Oracle for WhereScape RED10

Table of Contents

- [Prerequisites For PostgreSQL Metadata](#)
 - [Prerequisites for Target Database](#)
 - [Installation Through Setup Wizard](#)
 - [Upgrade Of Existing Repository](#)
 - [Post Install Steps – Optional](#)
 - [Source Enablement Pack Support](#)
 - [Troubleshooting and Tips](#)
-

Prerequisites For PostgreSQL Metadata

Before you begin the following prerequisites must be met:

- Create Database and ODBC DSN :
 - Supported* version of PostgreSQL (PostgreSQL 12 or higher)
 - A database to house the RED Metadata Repository.
 - A database to house scheduler (Optional)
- Software Installations
 - WhereScape RED10.1.x.x with valid license key entered and EULA accepted
 - WhereScape Enablement Pack for target database version RED10.1.x.x
- Windows Powershell (64 bit) version 4 or higher
 - To check Windows Powershell Version:
 - Run below command in Windows Powershell

```
Get-Host | Select-Object Version
```

- Run below command in Command Prompt

```
powershell $psversiontable
```

- Run the following command using PowerShell
 - The security protocol TLS 1.0 and 1.1 used by PowerShell to communicate with PowerShell gallery has deprecated and TLS 1.2 has been made mandatory

```
[Net.ServicePointManager]::SecurityProtocol = [Net.ServicePointManager]::SecurityProtocol -bor [Net.SecurityProtocolType]::Tls12  
Register-PSRepository -Default -Verbose  
Set-PSRepository -Name "PSGallery" -InstallationPolicy Trusted
```

- Progress bar placeholder info line

```
Install-Module -Name PoshProgressBar -SkipPublisherCheck -Force
```

* : RED supports the following versions for the metadata repository: PostgreSQL 12 or higher

Prerequisites for Target Database

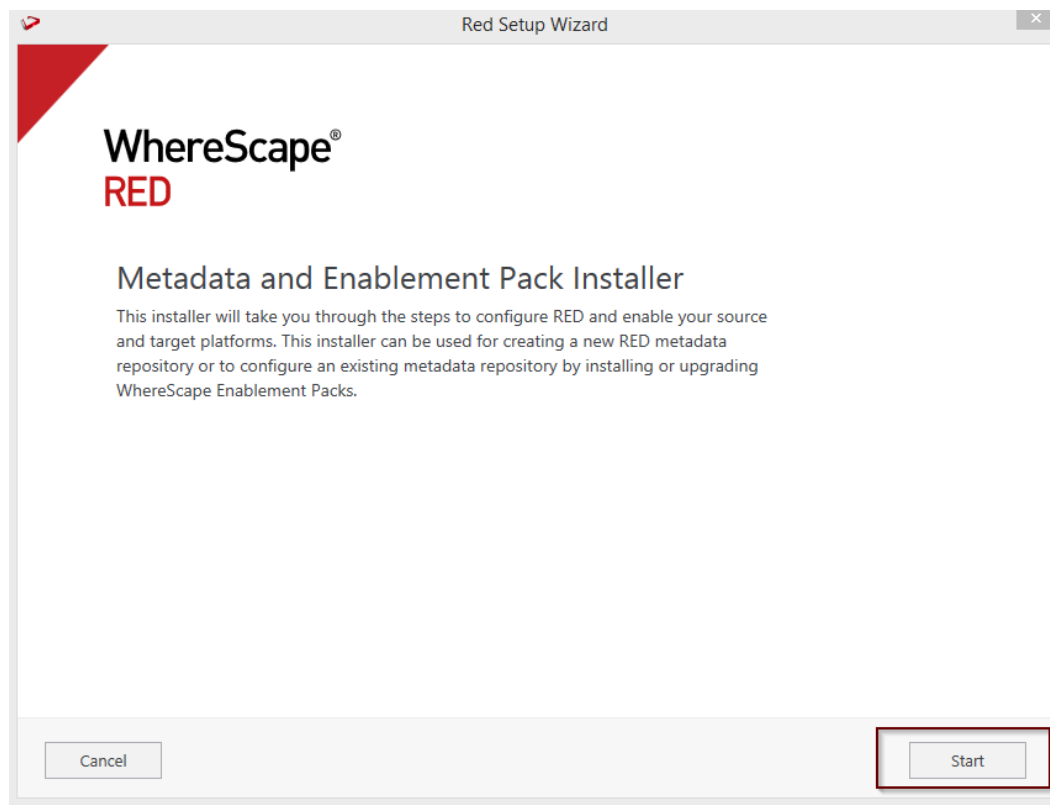
Before you begin the following prerequisites must be met:

1. Access to a Oracle System, with the following connectivity information:
 - TNS service Name
 - Database Name
 - Port

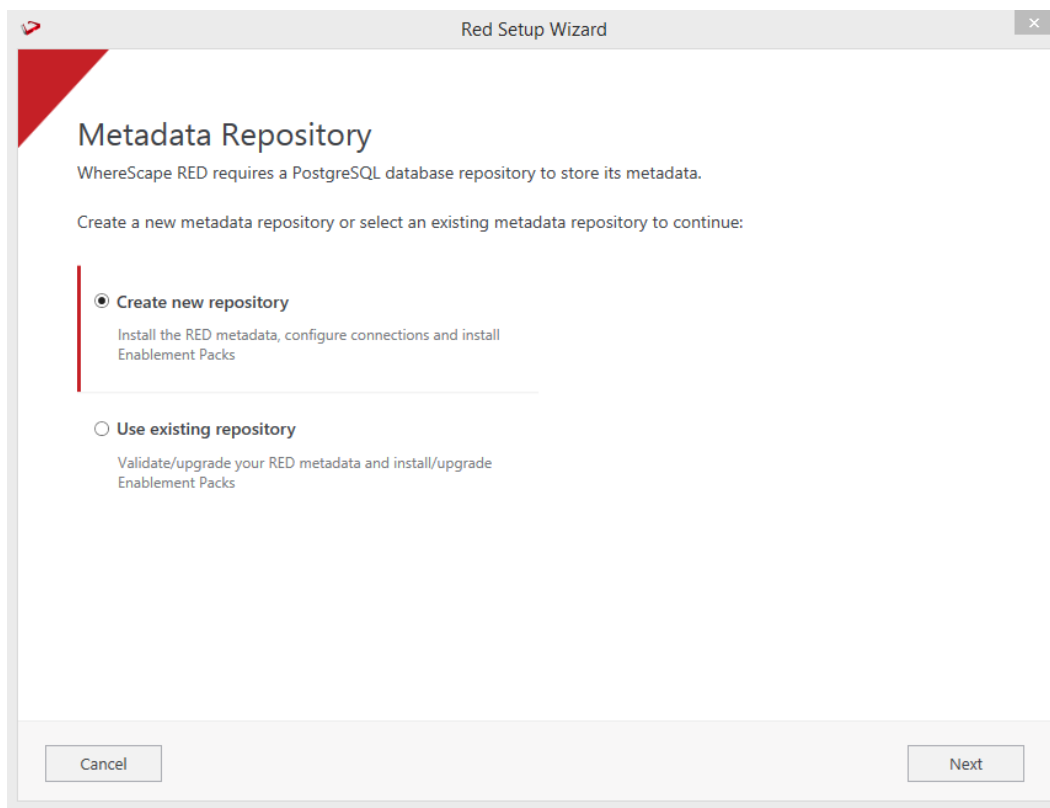
- User Name
 - Password
2. Please refer to this link for setting up **Oracle database local setup** ([Install SQL Loader on Windows](#))
 3. Setting up Oracle ODBC driver (64-bit)
 - Oracle Instant basic package ([Oracle Instant Client Basic Package Windows 64-bit](#))
 - Download the [Instant Client ODBC package](#). Unzip it in the same directory as your Basic package.
 - After unzipping all tools in same directory Execute `odbc_install.exe` from the Instant Client directory.
 - For local Oracle databases, users can skip the third step.
 4. For using **Oracle database on Server**, setting up SQL Loader Utility
 - Download the [Instant Client tools package](#). Unzip it in the same directory as your Basic package.
 - After unzipping all tools in same directory, Execute `sqlldr.exe` from the Instant Client directory.
 - For detailed document, please refer to document "Setup Guide for SQL Loader utility (Windows/Linux)" in the EP.
 5. After Oracle Instant client ODBC installed
 - Create Oracle ODBC driver DSN to connect to your RED Data Warehouse on Oracle.
 6. [Python 3.8 or higher](#)
 - Select "Add Python 3.8 to PATH" from installation Window
 - Pip Manager Install with command : `python -m pip install --upgrade pip`

Installation Through Setup Wizard

Run Setup Wizard as administrator



Create new repository or upgrade already existing repository.



Red Setup Wizard

Metadata Repository

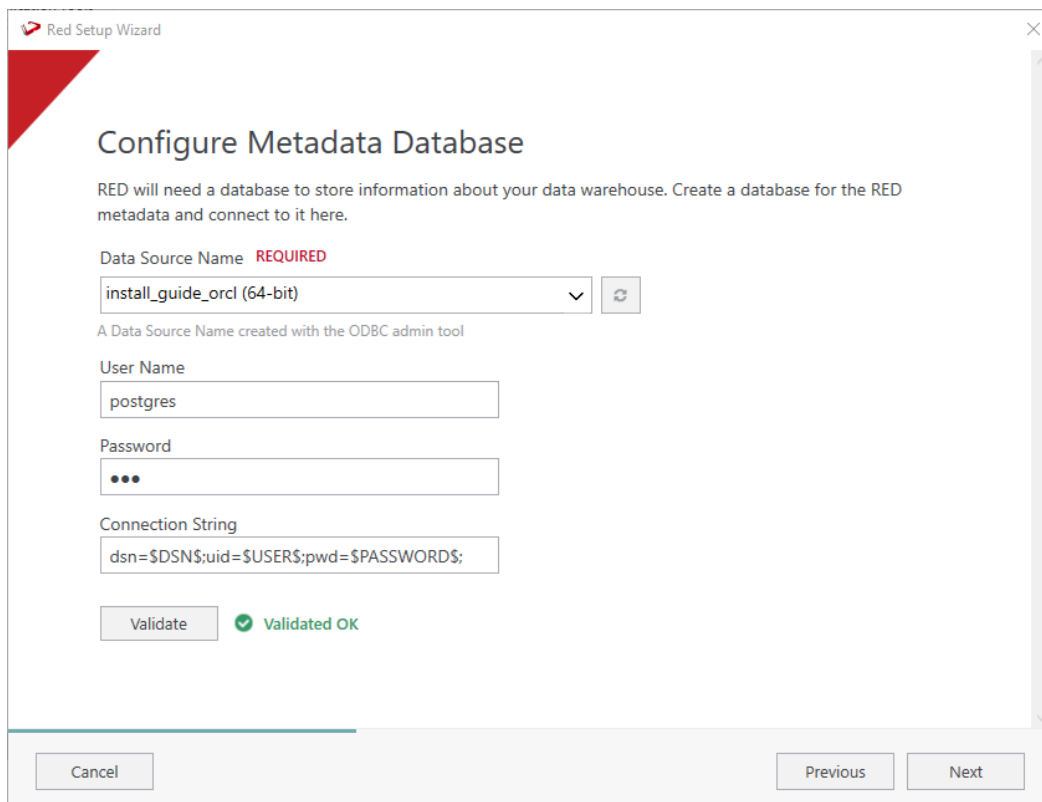
WhereScape RED requires a PostgreSQL database repository to store its metadata.

Create a new metadata repository or select an existing metadata repository to continue:

- ☒ **Create new repository**
Install the RED metadata, configure connections and install Enablement Packs
- ☐ **Use existing repository**
Validate/upgrade your RED metadata and install/upgrade Enablement Packs

Cancel Next

Select the created ODBC DSN, input login details, Connection String and then select "Validate". Press Next



Red Setup Wizard

Configure Metadata Database

RED will need a database to store information about your data warehouse. Create a database for the RED metadata and connect to it here.

Data Source Name **REQUIRED**

install_guide_orcl (64-bit) [v] [refresh]

A Data Source Name created with the ODBC admin tool

User Name

postgres

Password

...

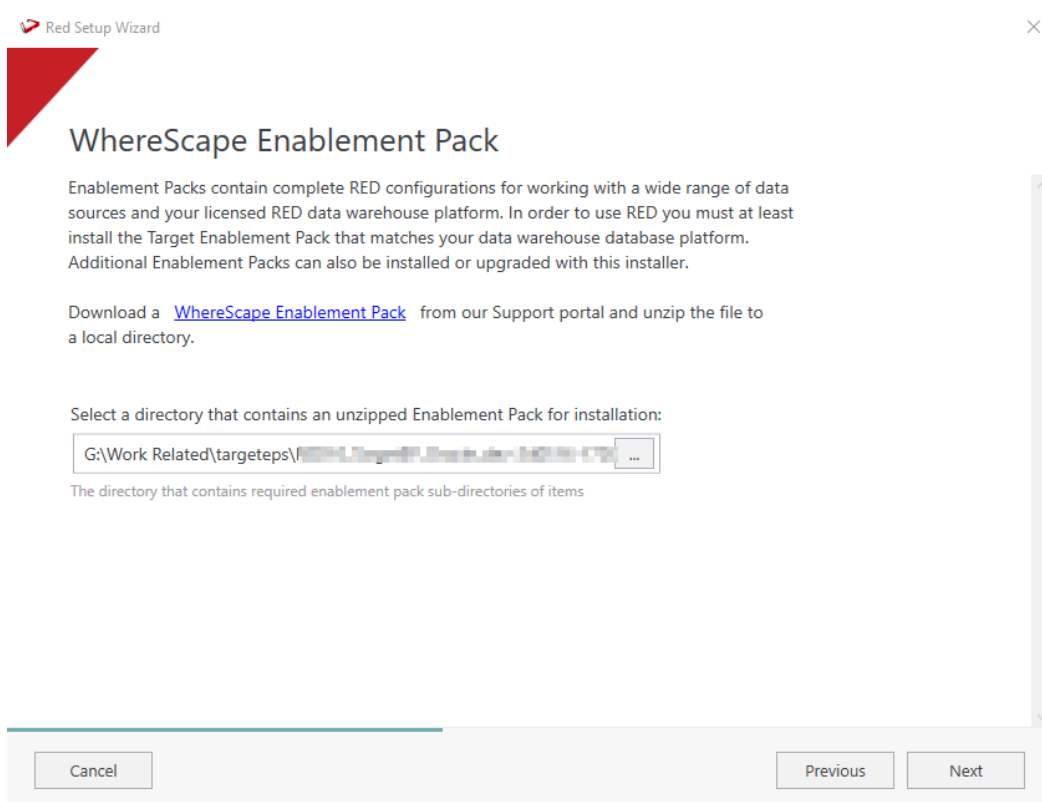
Connection String

dsn=\$DSN\$;uid=\$USER\$;pwd=\$PASSWORD\$;

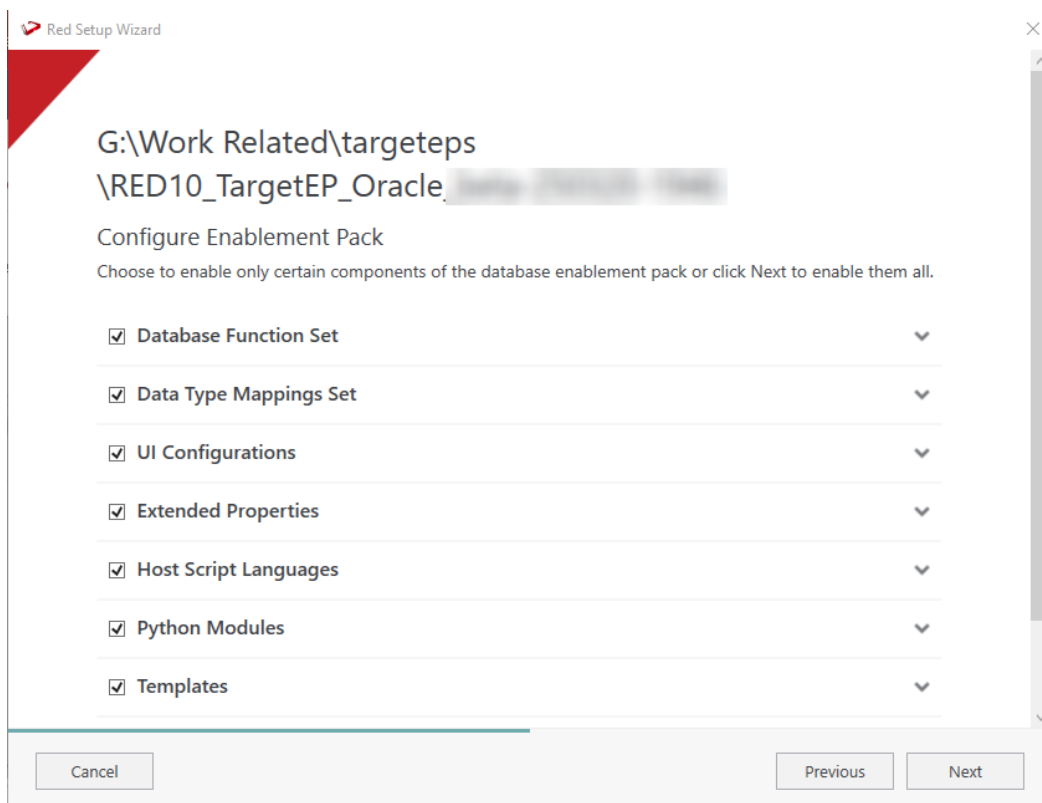
Validate [checkmark] Validated OK

Cancel Previous Next

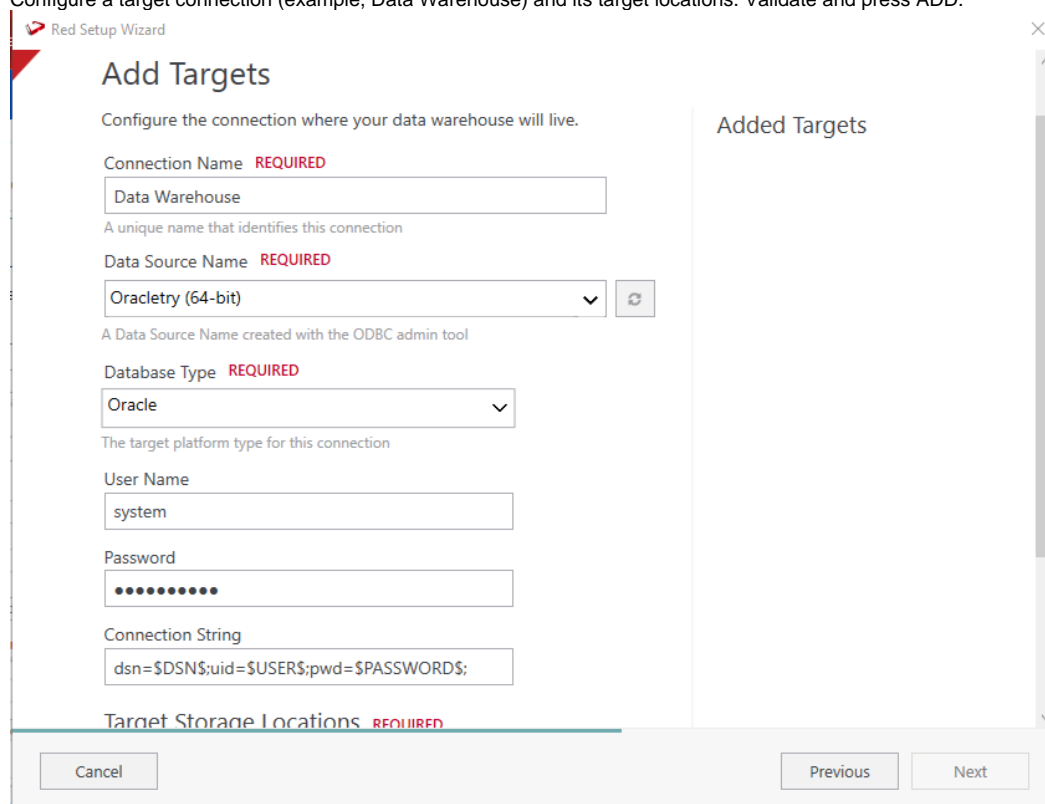
Select the directory that contains unzipped Enablement Pack for installation. Press Next



Using the check boxed list, include or exclude the components that are to be installed. Press Next.



Configure a target connection (example, Data Warehouse) and its target locations. Validate and press ADD.



Red Setup Wizard

Add Targets

Configure the connection where your data warehouse will live.

Connection Name **REQUIRED**
Data Warehouse
A unique name that identifies this connection

Data Source Name **REQUIRED**
Oracletry (64-bit) [v] [refresh]
A Data Source Name created with the ODBC admin tool

Database Type **REQUIRED**
Oracle [v]
The target platform type for this connection

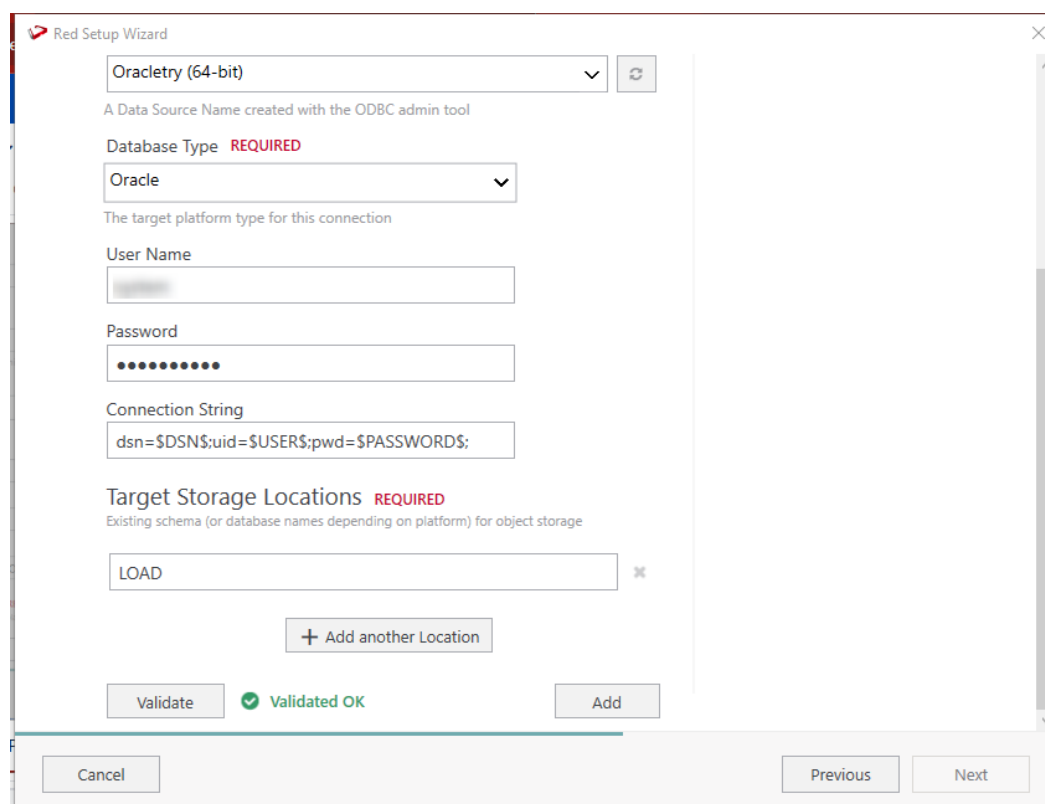
User Name
system

Password
[masked]

Connection String
dsn=\$DSN\$;uid=\$USER\$;pwd=\$PASSWORD\$;

Target Storage Locations **REQUIRED**

Cancel Previous Next



Oracletry (64-bit) [v] [refresh]
A Data Source Name created with the ODBC admin tool

Database Type **REQUIRED**
Oracle [v]
The target platform type for this connection

User Name
[masked]

Password
[masked]

Connection String
dsn=\$DSN\$;uid=\$USER\$;pwd=\$PASSWORD\$;

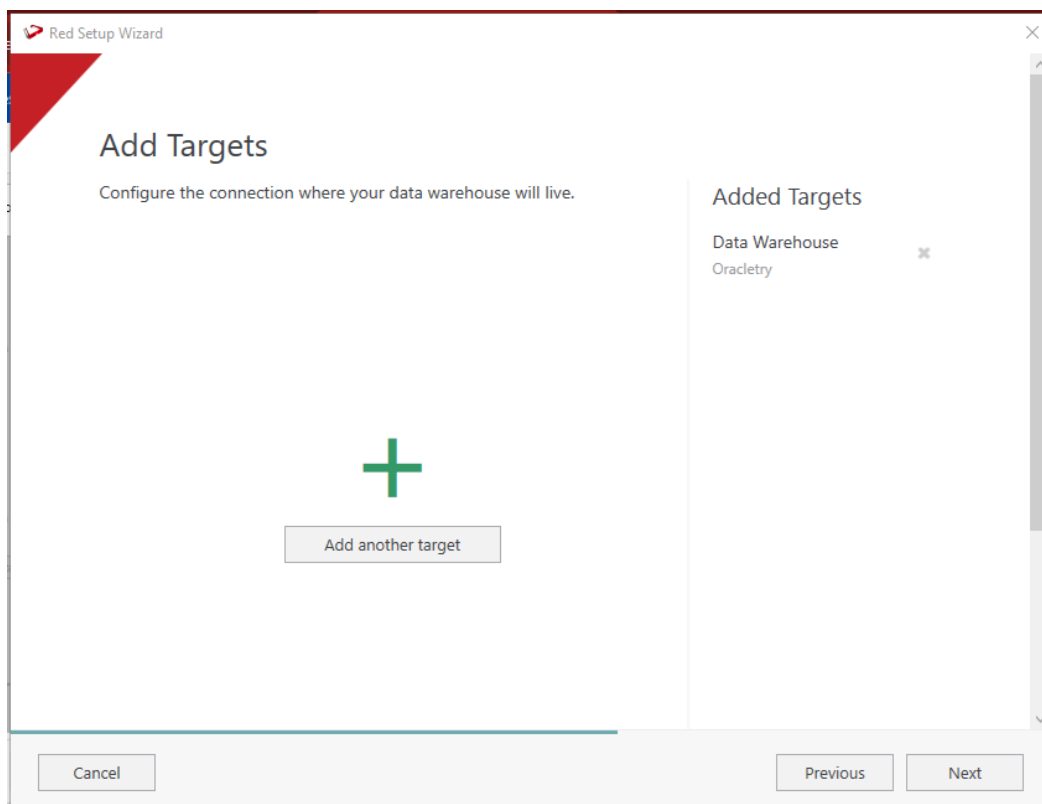
Target Storage Locations **REQUIRED**
Existing schema (or database names depending on platform) for object storage
LOAD [x]

+ Add another Location

Validate [checkmark] Validated OK Add

Cancel Previous Next


When done, press ADD and then Press Next to advance.




Red Setup Wizard

Add Targets

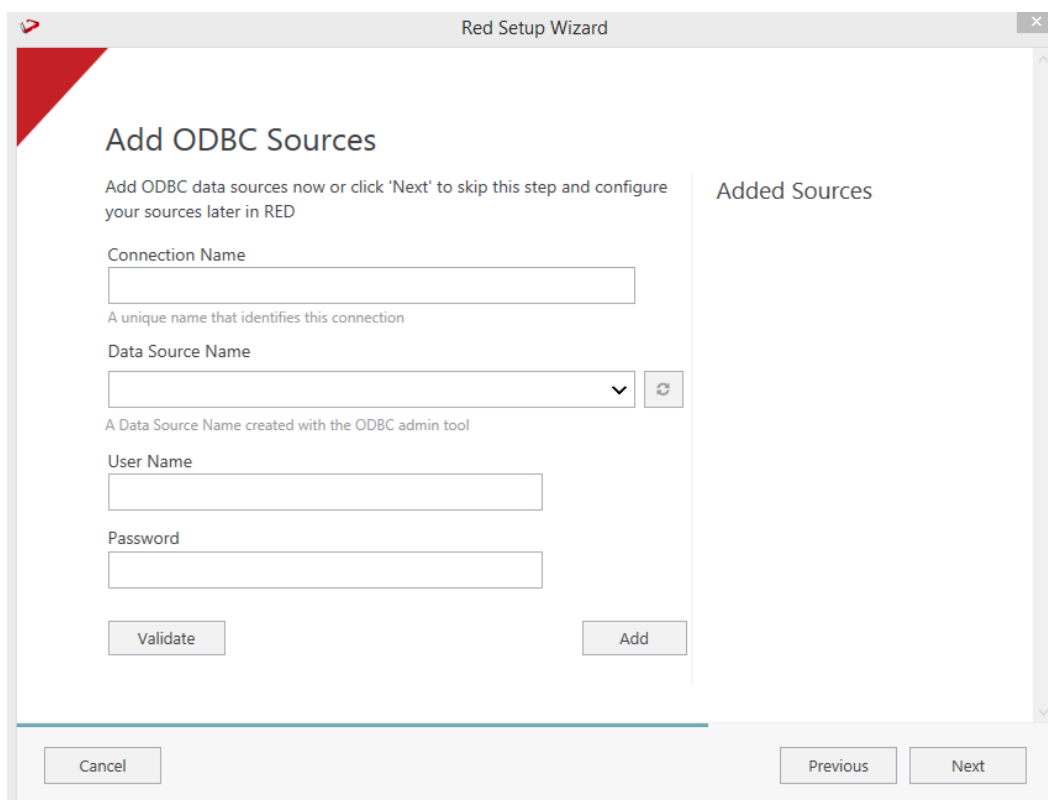
Configure the connection where your data warehouse will live.



Added Targets

Data Warehouse	
Oracletry	

Configure a data source connection (optional) and its target locations. Validate and press ADD. Press Next to advance.





Red Setup Wizard

Add ODBC Sources

Add ODBC data sources now or click 'Next' to skip this step and configure your sources later in RED

Connection Name

A unique name that identifies this connection

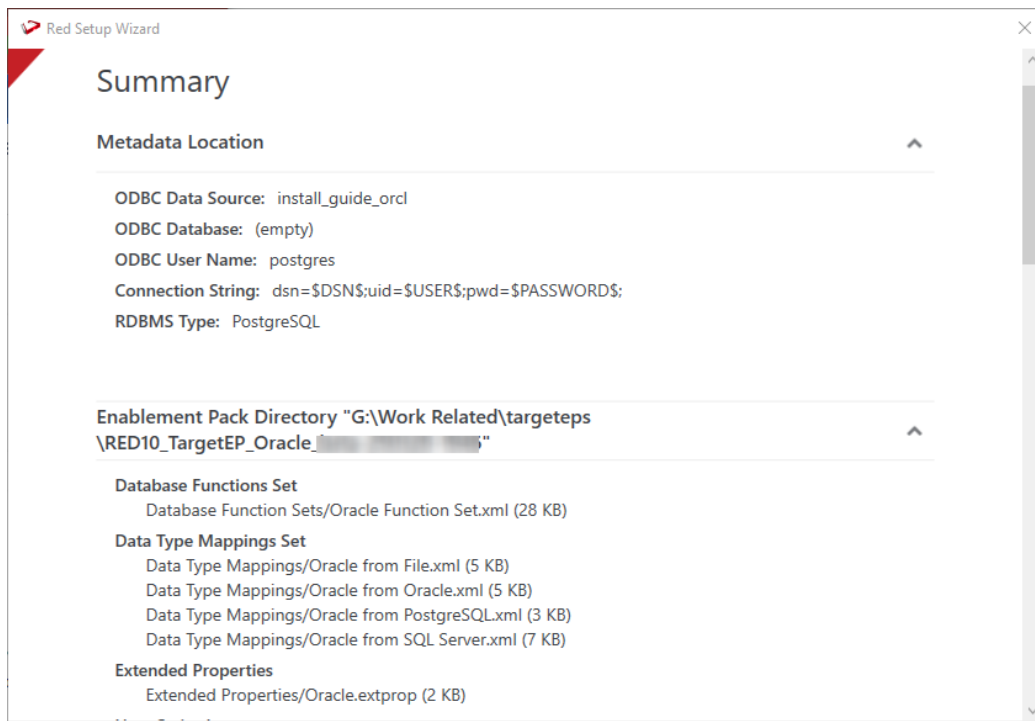
Data Source Name
  
A Data Source Name created with the ODBC admin tool

User Name

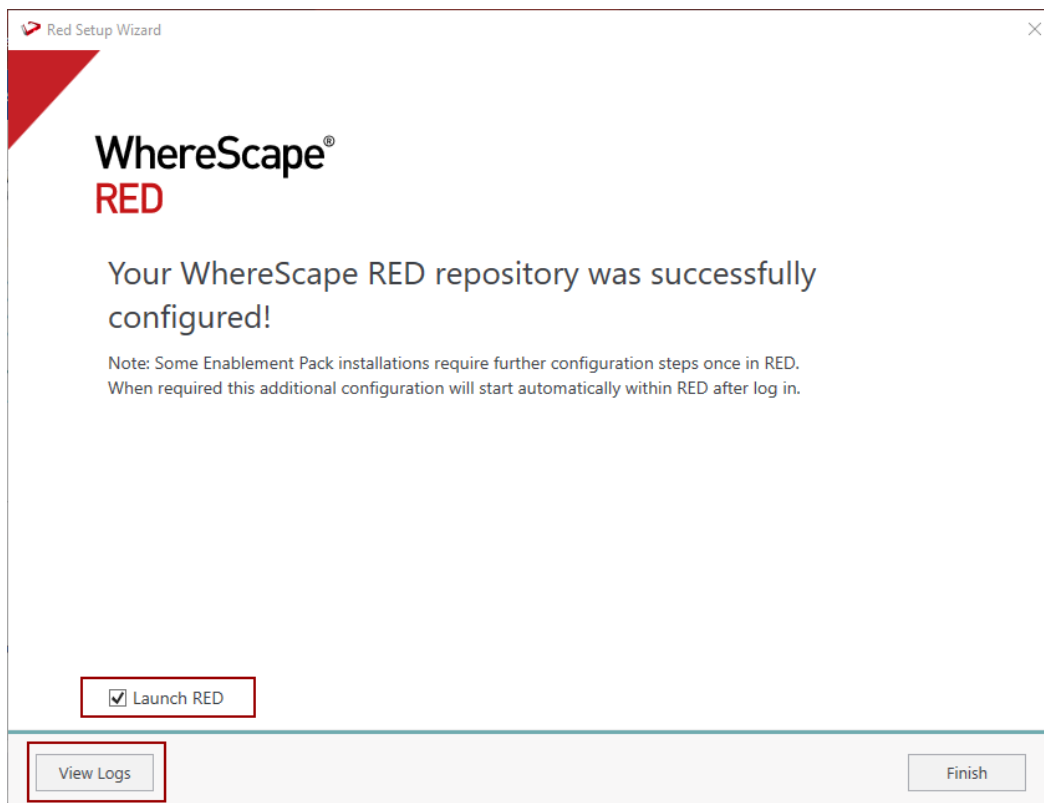
Password

Added Sources


Review the installation summary and click Install



Clicking on the View Logs will take to the installation log. Click on Finish once the installation is completed successfully.



Login to WhereScape RED.



Version 10.4.0.0 by WhereScape, Inc.
Copyright © 2025
Licensed to Data Entrega Partner License Expires 31 DEC 2025

REPOSITORY LOGIN

DATABASE

Data Sources:

Profile:

Database Login ID:

Password:

Connection String:

METADATA REPOSITORY

RED User Name:

CONNECT **CANCEL** **HELP**

Note: There is a post-install script that will run at the first login to RED10 to complete the post setup wizard installation process. You will be directed to below PowerShell window which will give brief explanation about post installation process.

Post Installation Setup for Enablement Pack

i The installation process will set up and configure the enablement pack, install necessary Python and PowerShell modules and libraries.

During installation you will be prompted to select the Enablement pack folder location and set either Python or PowerShell default template set. Additionally, you will have the option to choose the target location for deploying applications.

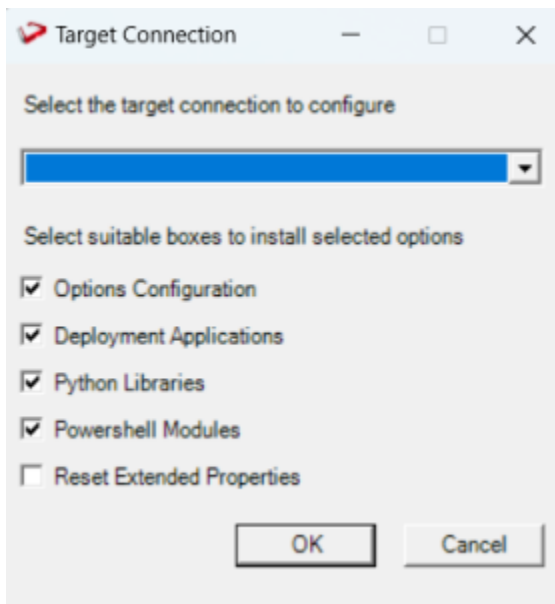
Select the appropriate options when prompted to ensure a successful installation.

Click 'OK' to continue with the installation process. Click 'Cancel' to cancel the installation process and redirect to RED.

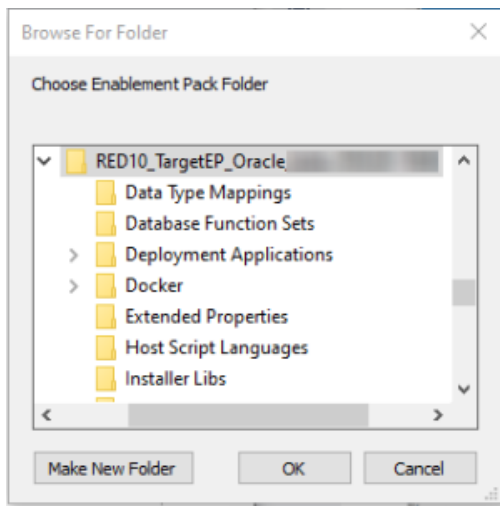
OK **Cancel**

Press OK to start the post installation. If pressed Cancel installation will stop and user will be directed to RED.

The user will be directed to the window below, where they have to select the target connection to be configured. Additionally, by deselecting the provided options, the user can choose not to install a particular option. "Reset Extended Properties" is deselected by default.

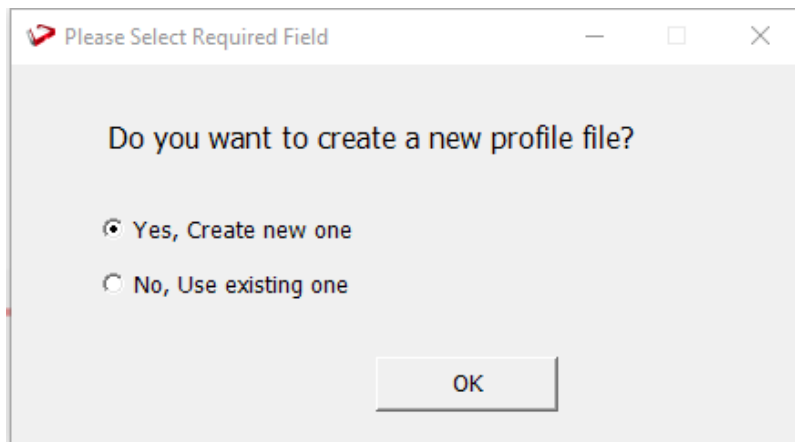


You will be directed to below PowerShell window. Provide the directory that contains unzipped Enablement Pack.

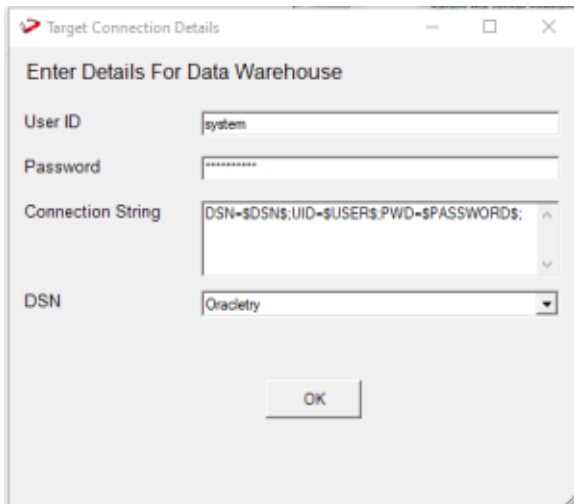


Press OK

The user will be directed to the window below, where they have to select if the user wants to create a new profile.



If the user selects 'Yes,' they must enter the data warehouse details. If the user selects 'No,' they must choose an existing profile file to use.



Target Connection Details

Enter Details For Data Warehouse

User ID: system

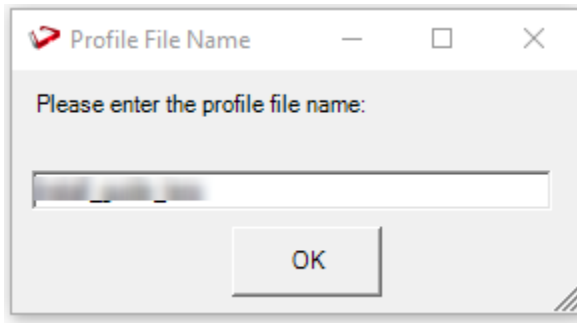
Password: [Redacted]

Connection String: DSN=\$DSN\$;UID=\$USER\$;PWD=\$PASSWORD\$;

DSN: Oracletry

OK

Enter profile file name



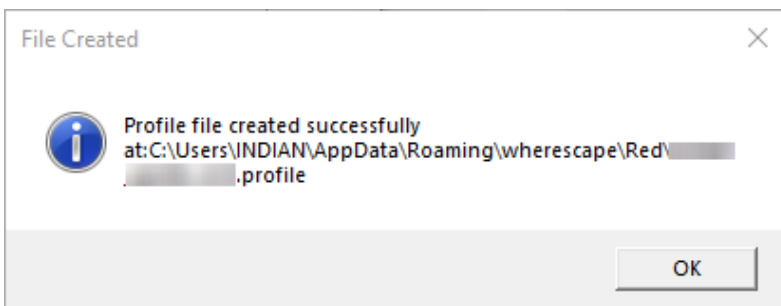
Profile File Name

Please enter the profile file name:

[Redacted]

OK

profile file gets created successfully

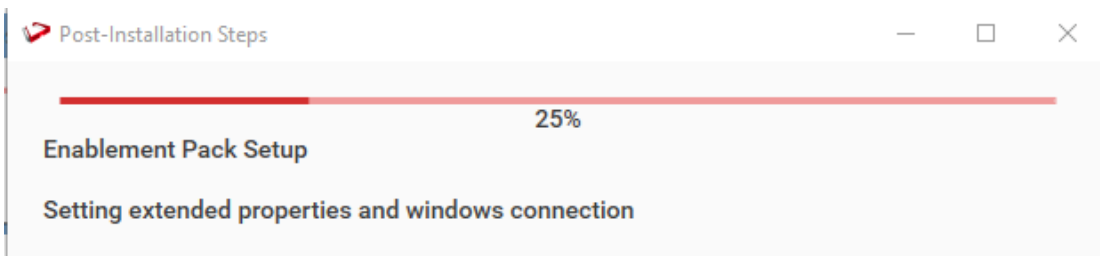


File Created

Profile file created successfully
at: C:\Users\INDIAN\AppData\Roaming\wherescape\Red\ [Redacted].profile

OK

The progress bar will show the post installation progress.



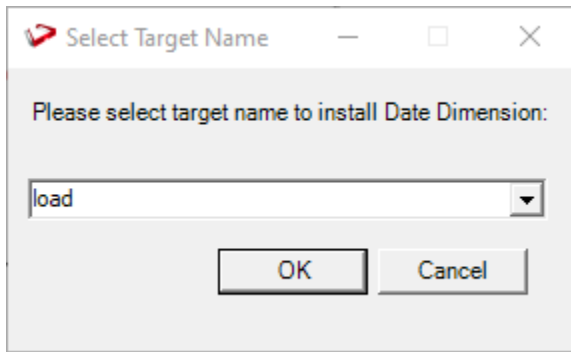
Post-Installation Steps

25%

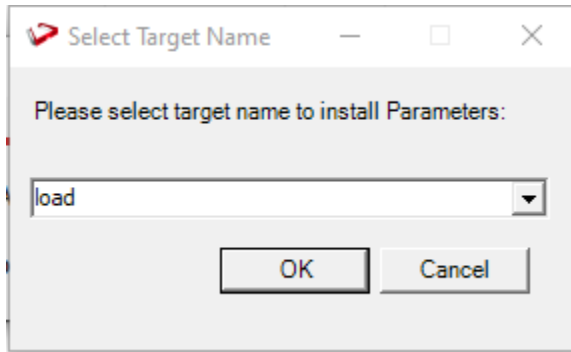
Enablement Pack Setup

Setting extended properties and windows connection

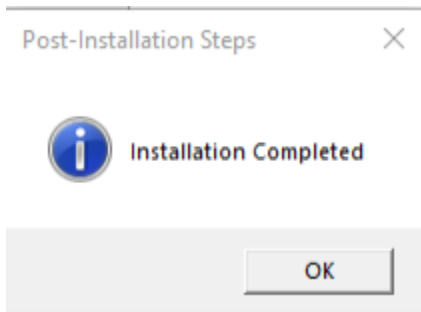
User will have to choose the schema for the target setting that were provided. One pop up will come for setting default target for Date Dimension.



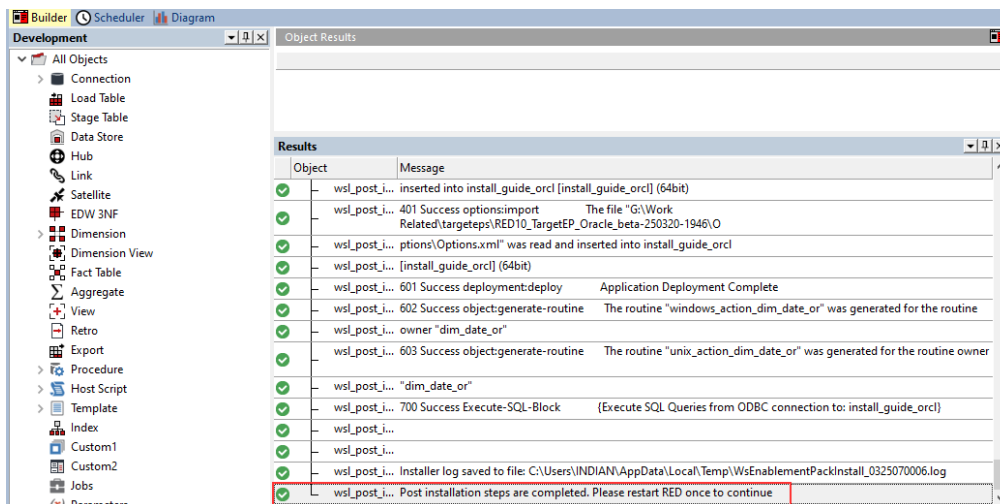
Similarly, the user will have to choose the schema for installing the Parameter Deployment application.



After selecting the target progress bar will show the progress for the installation and once it's completed, you will get the below pop up.



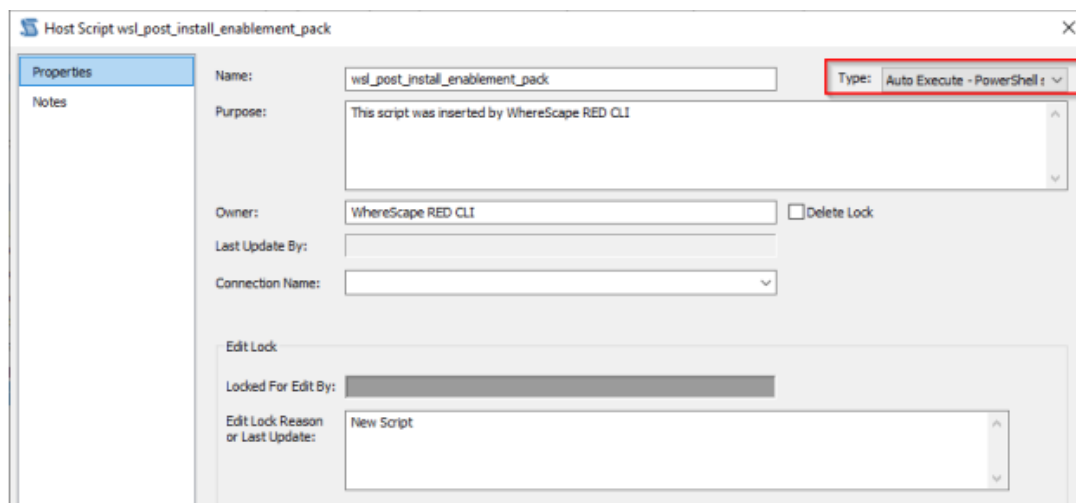
After pressing OK RED10 will open automatically. User will need to restart RED once.



Upgrade Of Existing Repository

For upgrade of existing repository

- From host script set script type of `wsl_post_install_enablement_pack` as Auto Execute - PowerShell Script



The screenshot shows the 'Host Script wsl_post_install_enablement_pack' dialog box. The 'Properties' tab is selected. The 'Name' field contains 'wsl_post_install_enablement_pack'. The 'Type' dropdown menu is set to 'Auto Execute - PowerShell' and is highlighted with a red rectangular box. The 'Purpose' field contains the text 'This script was inserted by WhereScape RED CLI'. The 'Owner' field contains 'WhereScape RED CLI'. The 'Last Update By' field is empty. The 'Connection Name' dropdown is empty. The 'Edit Lock' section shows 'Locked For Edit By' as a greyed-out field and 'Edit Lock Reason or Last Update' as 'New Script'.

Important Upgrade Notes

If RED upgrade the repository option is chosen.

This enablement pack will overwrite any existing Source Enablement Pack UI Configs:

Connection UI Config	Load UI Config
Amazon S3	Load From Amazon S3
Azure Data Lake Storage Gen2	Load From Azure Data Lake Storage Gen2
Google Cloud	Load From Google Cloud

To ensure existing Source Enablement Pack connections and associated Load Tables continue to browse and load:

Go into UI Configuration Maintenance in RED prior to installing this Enablement Pack and rename the affected UI Configurations. While the updated Load Template will work with previous Source Enablement Pack's we recommend moving these previous versions of Load Tables to newly created Parser based connections following this install. The earlier versions of the Source Enablement Pack will be deprecated following this release.

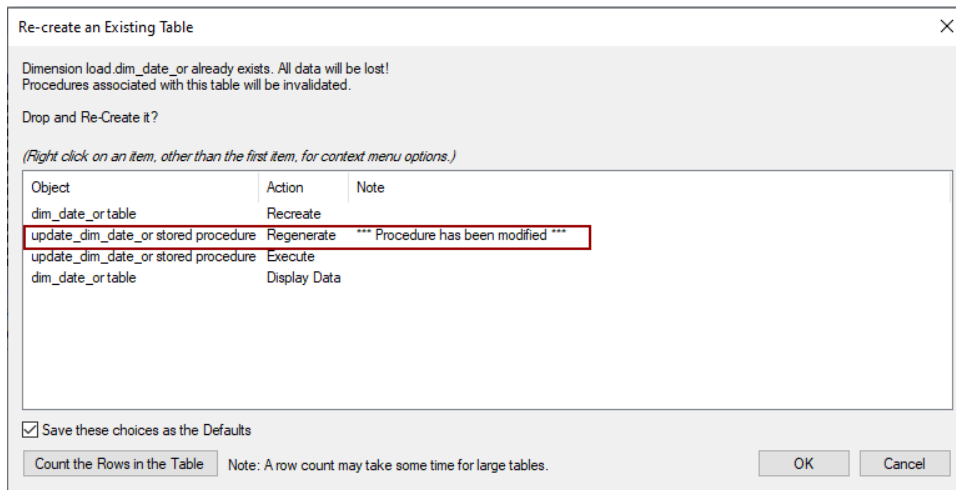
Post Install Steps – Optional

If you used the script Setup Wizard for installation then the following optional post install steps are available.

Configure Connections

There were two connections added that will optionally require your attention :

1. Connection: 'Database Source System' - this connection was setup as an example source connection,
 - open it's properties and set it up for a source DB in your environment
 - or you can remove it if not required
2. Execute Update Procedure for `dim_date_or` to **Initialize Date Dimension for Target**



NOTE: Please avoid regenerating the procedure update_dim_date_or as it is a custom procedure.

3. Execute **DSS_PARAM** under Dimension section after adding necessary parameters.

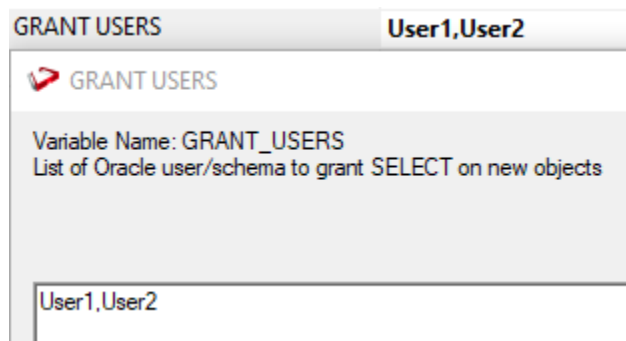
Source Enablement Pack Support

Source Pack Name	Supported By Oracle	Supported Features	Prerequisites/Permissions Required for Oracle
Google Cloud Storage	Yes	Download to local and load	Refer to Installation Guide - File Parser
Azure Data Lake Storage Gen2	Yes	Download to local and load	Refer to Installation Guide - File Parser
Amazon S3	Yes	Download to local and load	Refer to Installation Guide - File Parser
Windows Parser	Yes	Load Template, Source Properties will have option to select parser type to load the files.	Refer to Installation Guide - File Parser

Troubleshooting and Tips

Extended Property - GRANT USERS

Users can specify one or more Oracle users/schemas by separating them with commas (e.g.,User1,User2). This enables flexibility in granting access to multiple users or schemas in a single configuration.




Note: For Oracle version 23c, this property must be set to **True** to ensure proper sequence creation support.

Extended Property - CREATE SEQUENCE

This property indicates whether a sequence should be created for the associated object. Set to **True** to enable sequence creation; set to **False** to disable it.

CREATE SEQUENCE

FALSE

 CREATE SEQUENCE

Variable Name: CREATE_SEQUENCE
Indicates whether a sequence should be created for the associated object. Set to True to enable sequence creation; set to False to disable it.

FALSE

Run As Administrator

Press the Windows Key on your keyboard and start typing cmd.exe, when the cmd.exe icon shows up in the search list right click it to bring up the context menu, select "Run As Administrator"

Now you have an admin prompt navigate to the folder where you have unpacked your WhereScape Red Enablement Pack to using the 'cd' command:

```
C:\Windows\system32> cd <full path to the unpacked folder>
```

Run Powershell (.ps1) scripts from the administrator prompt by typing the Powershell run script command, for example:

```
C:\temp\EnablementPack> Powershell -ExecutionPolicy Bypass -File .\Setup_Enablement_Pack.ps1
```

Notes: In the event you can not bypass the Powershell execution policy due to group policies you can instead try "-ExecutionPolicy RemoteSigned" which should allow unsigned local scripts.

Setting up Environment Variables

1. Add a System and User Variable, set variable name as ORACLE_HOME to point a location for Oracle Home directory

Edit System Variable

×

Variable name: ORACLE_HOME

Variable value: D:\Oracle\WINDOWS.X64_193000_db_home

Browse Directory...

Browse File...

OK

Cancel

2. Add a System and User Variable, set variable name as TNS_ADMIN to point a location for tnsnames.ora file

Edit System Variable

×

Variable name: TNS_ADMIN

Variable value: D:\Oracle\WINDOWS.X64_193000_db_home\network\admin

Browse Directory...

Browse File...

OK

Cancel

3. Restart the system

Windows Powershell Script Execution

On some systems Windows Powershell script execution is disabled by default. There are a number of workarounds for this which can be found by searching the term "Powershell Execution Policy".

Here is the most common workaround which WhereScape suggests, which does not permanently change the execution rights:

Start a Windows CMD prompt as Administrator, change directory to your script directory and run the WhereScape Powershell scripts with this command:

- `cmd:>Powershell -ExecutionPolicy Bypass -File .\<script_file_name.ps1>`

Restarting failed scripts

Some of the setup scripts will track each step and output the step number when there is a failure. To restart from the failed step (or to skip the step) provide the parameter "-startAtStep <step number>" to the script.

Example:

`Powershell -ExecutionPolicy Bypass -File .\<script_file_name.ps1> -startAtStep 123`

Tip: to avoid having to provide all the parameters again you can copy the full command line with parameters from the first "INFO" message from the beginning of the console output.

Python requirements for offline install

Additionally to the base Python installation being required, the WhereScape Python Template set also requires certain additional Python libraries. The install scripts uses the PIP (package manager) to download these libraries, however for offline installs you will need to install the required libraries yourself.

Required Python libraries/add-ons:

- pywin32-ctypes
- python-tds
- pywin32
- glob2
- gzip-reader
- regex
- pyodbc

If a valid RED installation can not be found

If you have RED 10.x or higher installed but the script (Setup_Enablement_Pack.ps1) fails to find it on your system then you are most likely running PowerShell (x86) version which does not show installed 64 bit apps by default. Please open a 64 bit version of Powershell instead and re-run the script.