

Install Guide - SetupWizard - SQL Server -RED 10.4

WhereScape Enablement Pack for SQL Server - RED 10.4

This is a guide to installing the WhereScape Enablement Pack for SQL Server for WhereScape RED10

Table of Contents

- [Prerequisites For PostgreSQL Metadata](#)
 - [Prerequisites Target Database](#)
 - [Installation Through Setup Wizard](#)
 - [Upgrade Of Existing Repository](#)
 - [SSIS - Connection String Generation](#)
 - [Post Install Steps – Optional](#)
 - [Source Enablement Pack Support](#)
 - [Troubleshooting and Tips](#)
-

Prerequisites For PostgreSQL Metadata

Before you begin the following prerequisites must be met:

- Create Database and ODBC DSN :
 - Supported* version of PostgreSQL (PostgreSQL 12 or higher)
 - A database to house the RED Metadata Repository.
 - A database for the Range Table DB (Optional)
 - A database to house scheduler (Optional)
- Software Installations
 - WhereScape RED10 with valid license key entered and EULA accepted
 - WhereScape Enablement Pack for target database version RED10
- Windows Powershell (64 bit) version 4 or higher
 - To check Windows Powershell Version:
 - Run below command in Windows Powershell

```
Get-Host | Select-Object Version
```

- Run below command in Command Prompt

```
powershell $psversiontable
```

- Run the following command using PowerShell
 - The security protocol TLS 1.0 and 1.1 used by PowerShell to communicate with PowerShell gallery has deprecated and TLS 1.2 has been made mandatory

```
[Net.ServicePointManager]::SecurityProtocol = [Net.ServicePointManager]::  
SecurityProtocol -bor [Net.SecurityProtocolType]::Tls12  
Register-PSRepository -Default -Verbose  
Set-PSRepository -Name "PSGallery" -InstallationPolicy Trusted
```

- Progress bar placeholder info line

```
Install-Module -Name PoshProgressBar -SkipPublisherCheck -Force
```

* : RED supports the following versions for the metadata repository: PostgreSQL 12 or higher

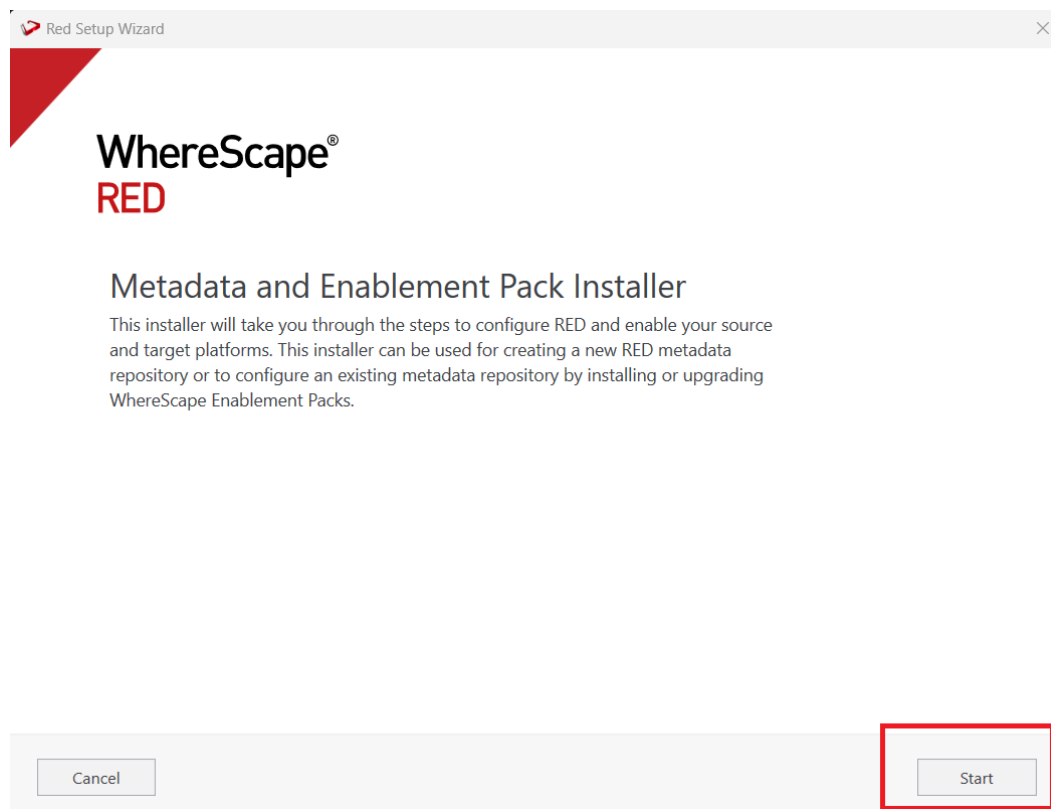
Prerequisites Target Database

Before you begin the following prerequisites must be met:

- Access to an SQL Server (Target Environment), with the following connectivity information :
 1. Server Name
 2. Database Name
 3. User Name
 4. Password
 5. At least one schema available to use as a RED Data Warehouse Target
- SQL Server software installed
 - SQL Server ODBC driver (64-bit)
 1. Add ODBC DSN for SQL Server Target Database
- SQL Server software installed
 - SQL Server ODBC driver (64-bit)
 1. Add ODBC DSN for SQL Server Target Database
- [Python 3.8 or higher](#)
 - Select "Add Python 3.8 to PATH" from installation Window
 - Pip Manager Install with command : `python -m pip install --upgrade pip`

Installation Through Setup Wizard

Run Setup Wizard as administrator



Create new repository or upgrade already existing repository.

Red Setup Wizard

Metadata Repository

WhereScape RED requires a PostgreSQL database repository to store its metadata.

Create a new metadata repository or select an existing metadata repository to continue:

☒ Create new repository

Install the RED metadata, configure connections and install Enablement Packs

☐ Use existing repository

Validate/upgrade your RED metadata and install/upgrade Enablement Packs

Cancel

Next

Select the created ODBC DSN, input login details and then select "Validate". Press Next

Red Setup Wizard

Configure Metadata Database

RED will need a database to store information about your data warehouse. Create a database for the RED metadata and connect to it here.

Data Source Name **REQUIRED**

edw_installation_doc (64-bit)

A Data Source Name created with the ODBC admin tool

User Name

postgres

Password

••••••••

Connection String

dsn=\$DSN\$;uid=\$USER\$;pwd=\$PASSWORD\$;

Validate

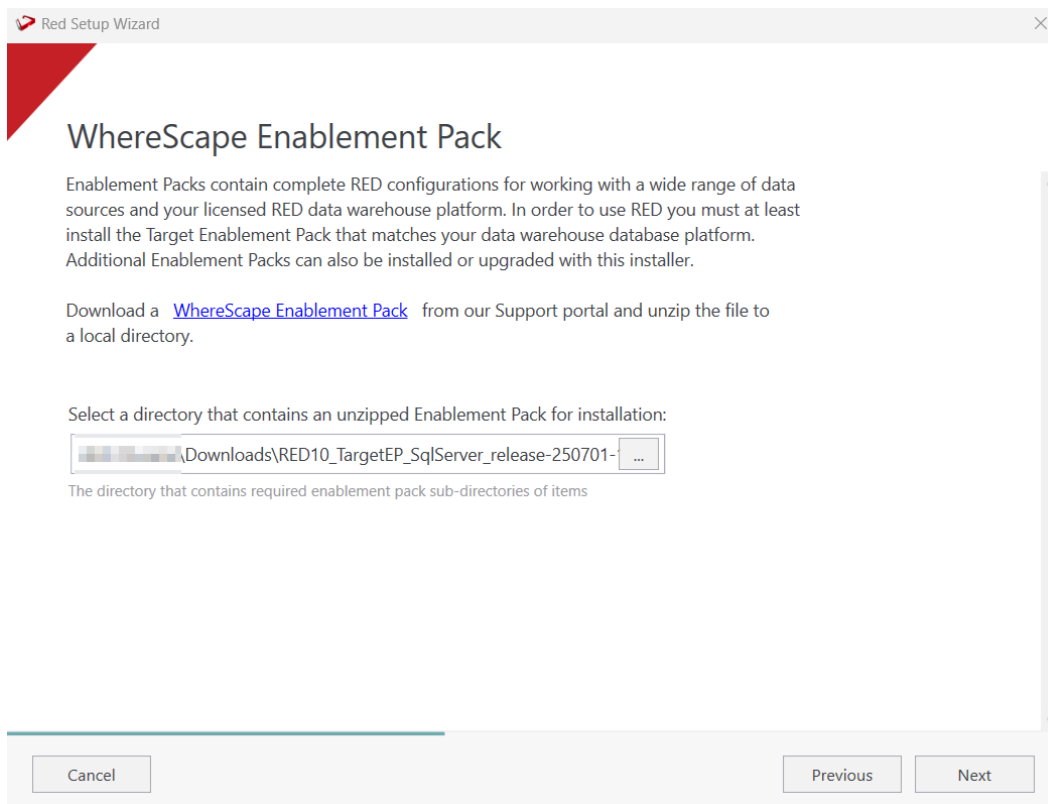
Validated OK

Cancel

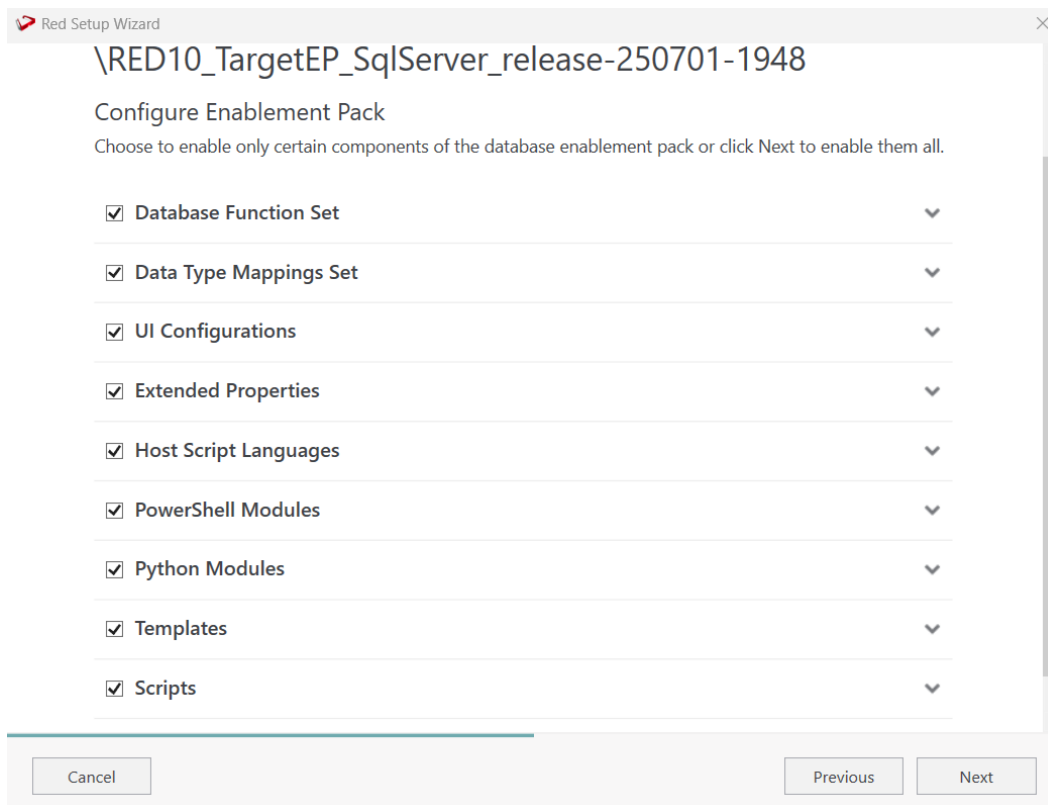
Previous

Next

Select the directory that contains unzipped Enablement Pack for installation. Press Next



Using the check boxed list, include or exclude the components that are to be installed. Press Next.



Configure a target connection (example, Data Warehouse) and its target locations. Validate and press ADD.

Red Setup Wizard


Add Targets

Configure the connection where your data warehouse will live.

Connection Name **REQUIRED**

A unique name that identifies this connection

Data Source Name **REQUIRED**

A Data Source Name created with the ODBC admin tool

Database Type **REQUIRED**

The target platform type for this connection

User Name

Password

Connection String

Cancel Previous Next

When done, press ADD and then Press Next to advance.


Red Setup Wizard

Add Targets

Configure the connection where your data warehouse will live.

Added Targets

Data Warehouse
Sql Server



Add another target

Cancel Previous Next

Configure a data source connection (optional) and its target locations. Validate and press ADD. Press Next to advance.

Red Setup Wizard

Add ODBC Sources

Add ODBC data sources now or click 'Next' to skip this step and configure your sources later in RED

Connection Name

A unique name that identifies this connection

Data Source Name

A Data Source Name created with the ODBC admin tool

User Name

Password

Added Sources

Review the installation summary and click Install

Red Setup Wizard

Summary

Metadata Location

ODBC Data Source: edw_installation_doc
 ODBC Database: (empty)
 ODBC User Name: postgres
 Connection String: dsn=\$DSN\$;uid=\$USER\$;pwd=\$PASSWORD\$;
 RDBMS Type: PostgreSQL

Enablement Pack Directory "C:\Users\██████████\RED10_TargetEP_SqlServer_release-250701-1948"


Database Functions Set
 Database Function Sets/AzureSQL Function Set.xml (111 KB)

Data Type Mappings Set
 Data Type Mappings/Azure SQL Server from Azure SQL Server.xml (2 KB)
 Data Type Mappings/Azure SQL Server from DB2.xml (3 KB)
 Data Type Mappings/Azure SQL Server from File.xml (6 KB)
 Data Type Mappings/Azure SQL Server from SQL Server.xml (4 KB)
 Data Type Mappings/Azure SQL Server from XML and JSON.xml (2 KB)

Extended Properties
 Extended Properties/Azure SQL Server properties (2 KB)

Clicking on the View Logs will take to the installation log. Click on Finish once the installation is completed successfully.

Red Setup Wizard



WhereScape® RED

Your WhereScape RED repository was successfully configured!


Note: Some Enablement Pack installations require further configuration steps once in RED.
When required this additional configuration will start automatically within RED after log in.

☒ Launch RED

View Logs

Finish

Login to WhereScape RED.



Version 10.4.0.3 by WhereScape, Inc.
Copyright © 2025
Licensed to Data Entrega Partner License Expires 31 DEC 2025

REPOSITORY LOGIN

DATABASE

Data Sources: edw_installation_doc (64-bit) ▾

Profile: ▾

Database Login ID: ▾

Password: ▾

Connection String: dsn=\$DSN\$;uid=\$USER\$;pwd=\$PAS

METADATA REPOSITORY

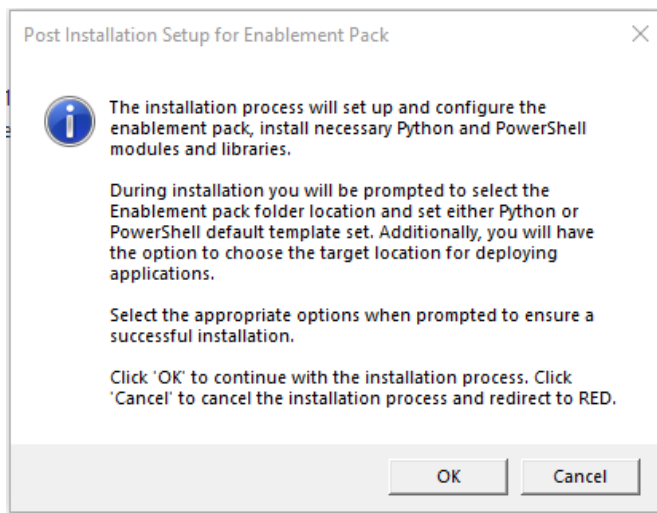
RED User Name: QA

CONNECT

CANCEL

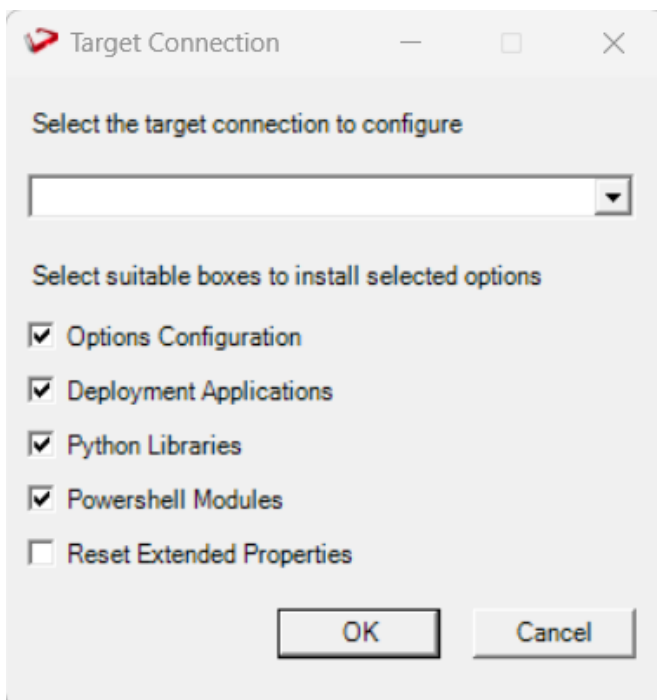
HELP

Note: There is a post-install script that will run at the first login to RED10 to complete the post setup wizard installation process. You will be directed to below PowerShell window which will give brief explanation about post installation process.

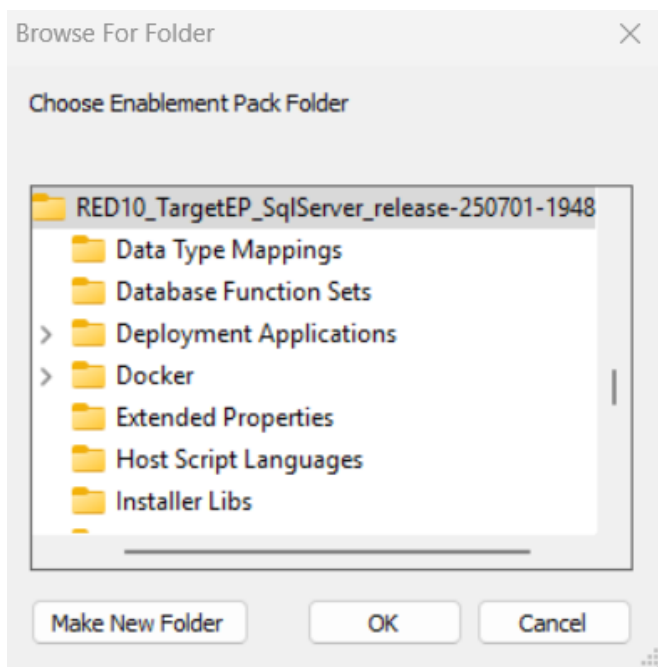


Press OK to start the post installation. If pressed Cancel installation will stop and user will be directed to RED.

The user will be directed to the window below, where they have to select the target connection to be configured. Additionally, by deselecting the provided options, the user can choose not to install a particular option. "Reset Extended Properties" is deselected by default.

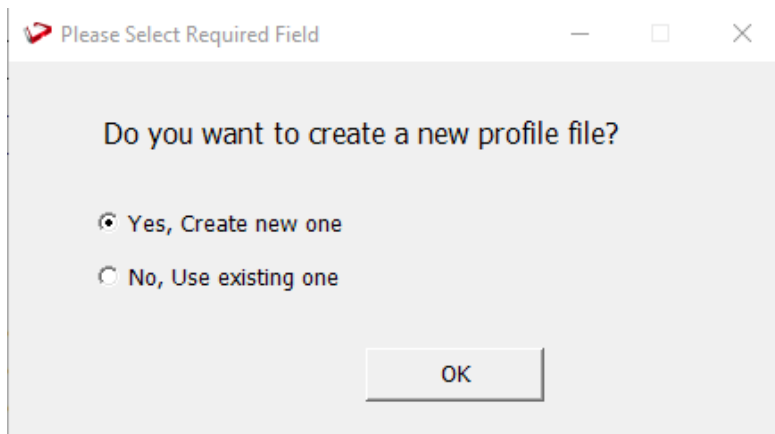


You will be directed to below PowerShell window. Provide the directory that contains unzipped Enablement Pack.



Press OK

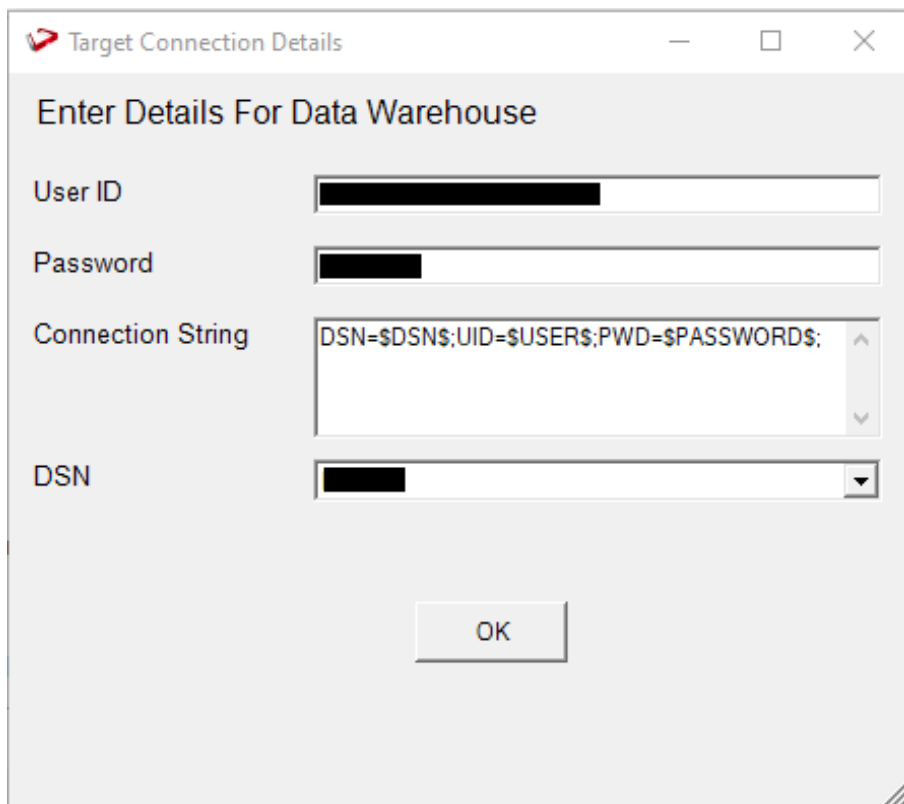
The user will be directed to the window below, where they have to select the Create new profile or use existing one option.



Note: For fresh installation RED will create profile file with same name as DSN, which the user can use or choose to create new profile file.

Press Ok.

For "Yes, Create new one" option , user will be directed to the window below.



The dialog box is titled "Target Connection Details" and contains the following fields:

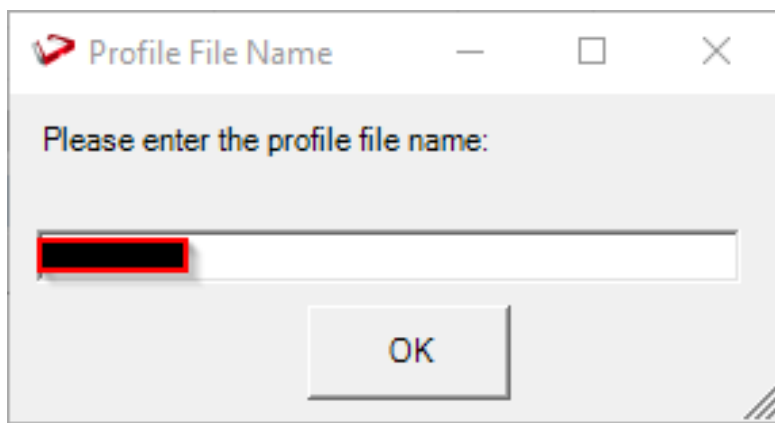
- User ID: [Redacted]
- Password: [Redacted]
- Connection String: DSN=\$DSN\$;UID=\$USERS\$;PWD=\$PASSWORD\$;
- DSN: [Redacted]

There is an "OK" button at the bottom.

Note: User can use default connection string or input new one.

Press OK

The user will be directed to the window below, where user can add profile name.

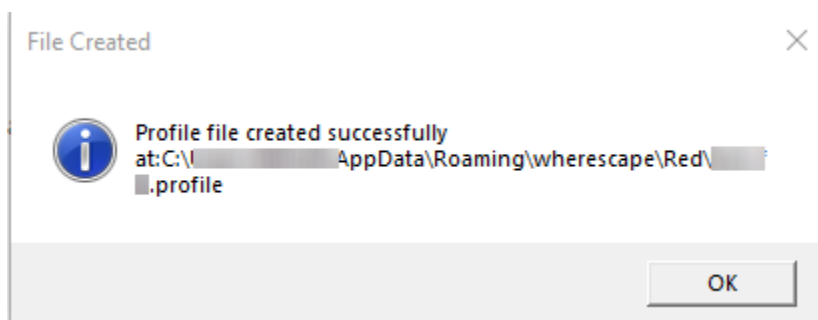


The dialog box is titled "Profile File Name" and contains the following elements:

- Text: Please enter the profile file name:
- Text input field: [Redacted]
- OK button

Press Ok.

The below pop up will come to confirm the user that profile is created at that location

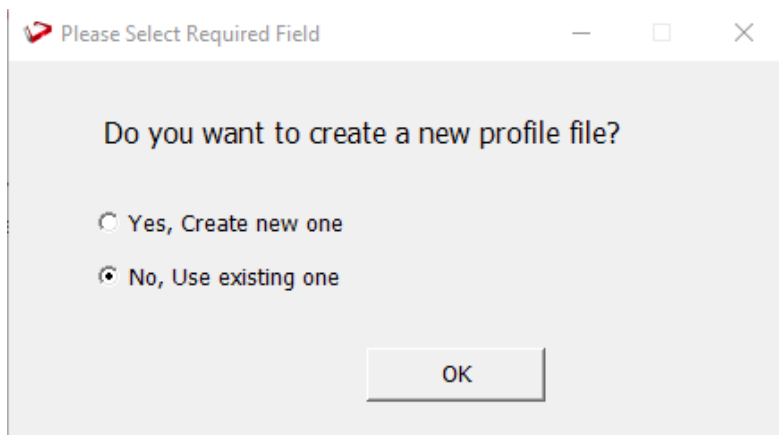


The notification dialog box is titled "File Created" and contains the following information:

- Icon: Information icon
- Text: Profile file created successfully
- Text: at: C:\[Redacted]\AppData\Roaming\wherescape\Red\ [Redacted].profile
- OK button

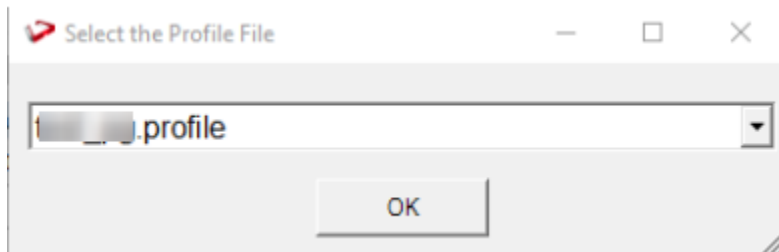
Press OK.

If the user choose "No, Use existing one" option.



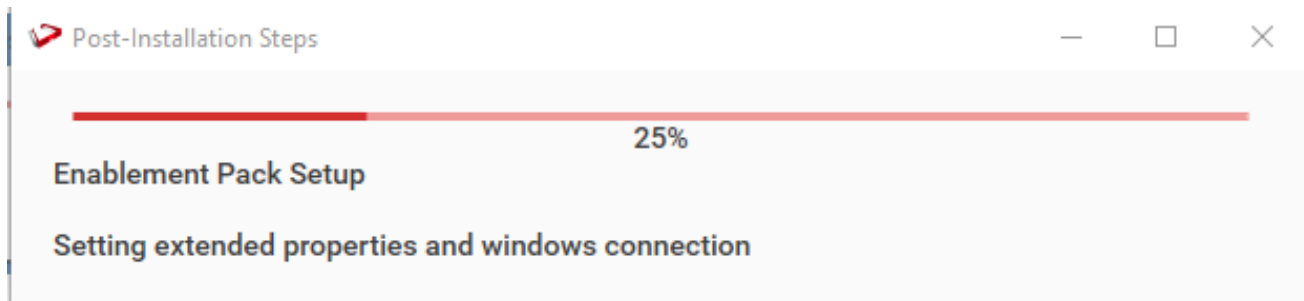
Press OK

The user will be directed to the window below, where user can select the exiting profile file.

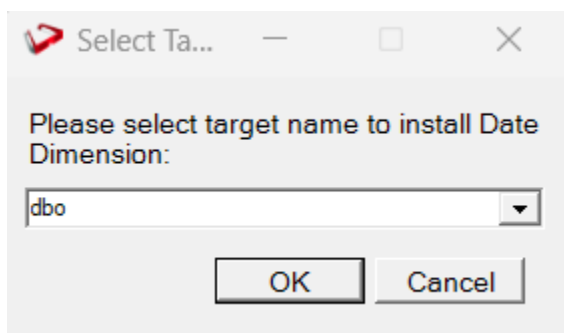


Press OK.

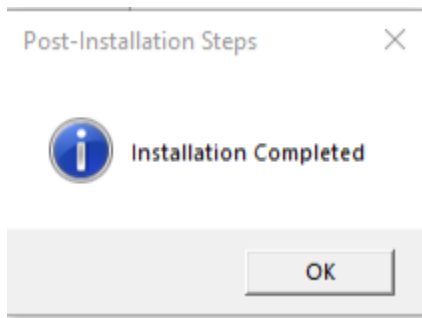
The progress bar will show the post installation progress.



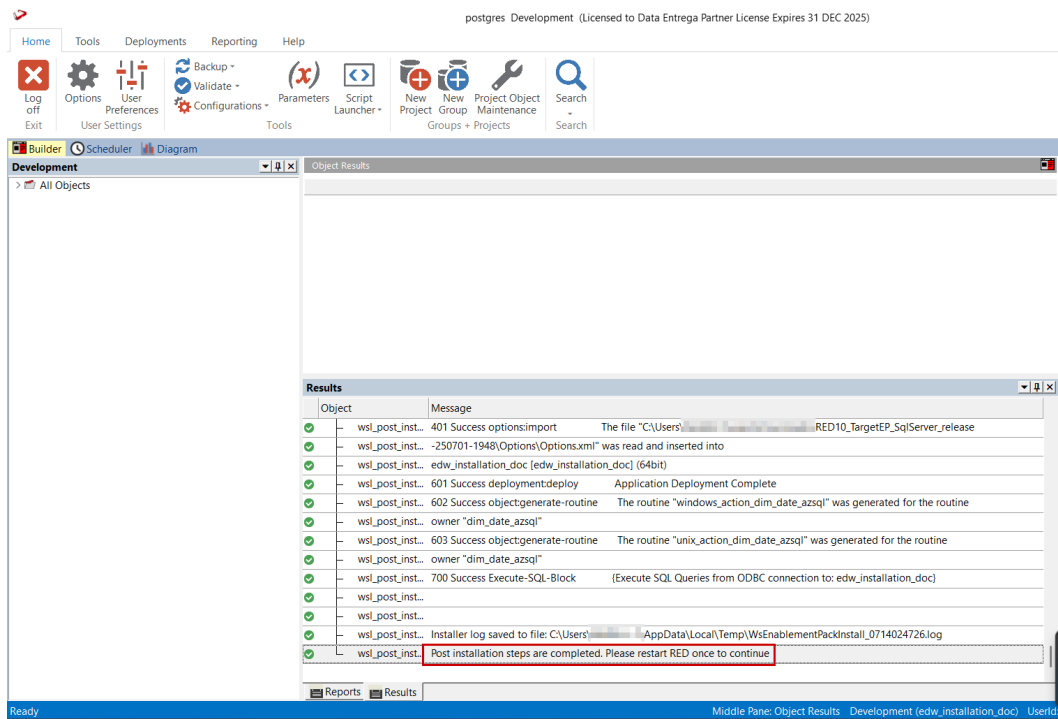
User will have to choose the schema for the target setting that were provided. One pop up will come for setting default target schema for Date Dimension.



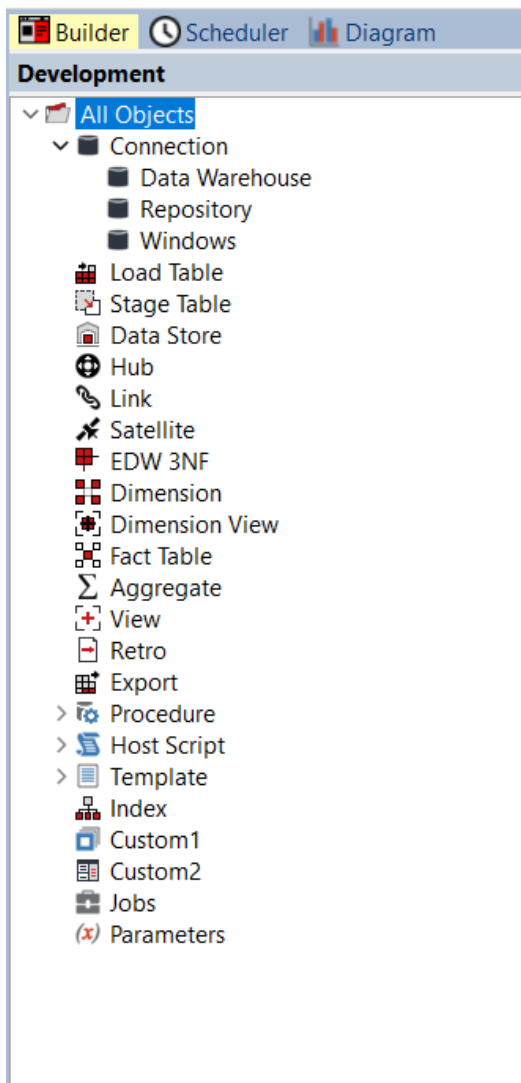
After selecting the target schema progress bar will show the progress for the installation and once it's completed, you will get the below pop up.



After pressing OK RED10 will open automatically.



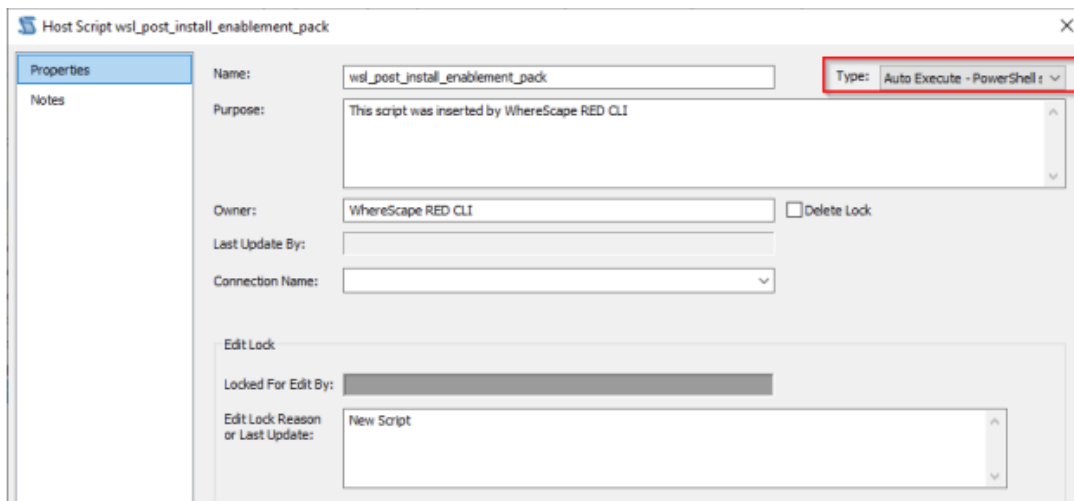
User will need to restart RED once.



Upgrade Of Existing Repository

For upgrade of existing repository

- From host script set script type of *wsl_post_install_enablement_pack* as Auto Execute - PowerShell Script



Important Upgrade Notes

If RED upgrade the repository option is chosen.

This enablement pack will overwrite any existing Source Enablement Pack UI Configs:

Connection UI Config	Load UI Config
Amazon S3	Load From Amazon S3
Azure Data Lake Storage Gen2	Load From Azure Data Lake Storage Gen2
Google Cloud	Load From Google Cloud

To ensure existing Source Enablement Pack connections and associated Load Tables continue to browse and load:

Go into UI Configuration Maintenance in RED prior to installing this Enablement Pack and rename the affected UI Configurations. While the updated Load Template will work with previous Source Enablement Pack's we recommend moving these previous versions of Load Tables to newly created Parser based connections following this install. The earlier versions of the Source Enablement Pack will be deprecated following this release.

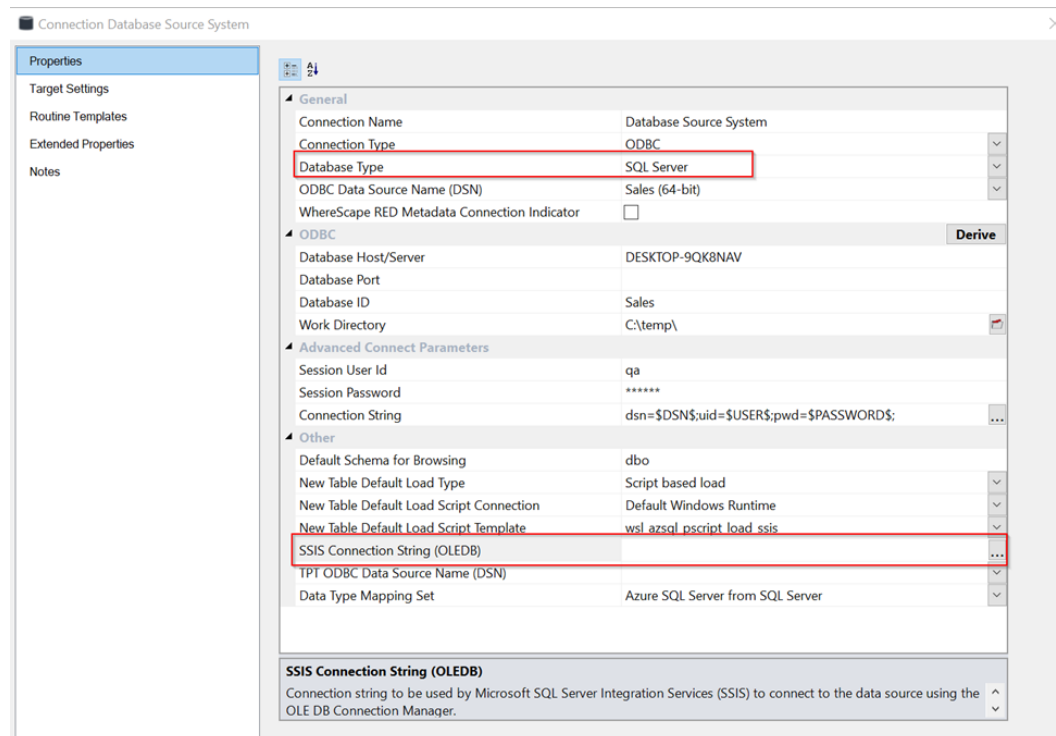
SSIS - Connection String Generation

- **Prerequisites:** -

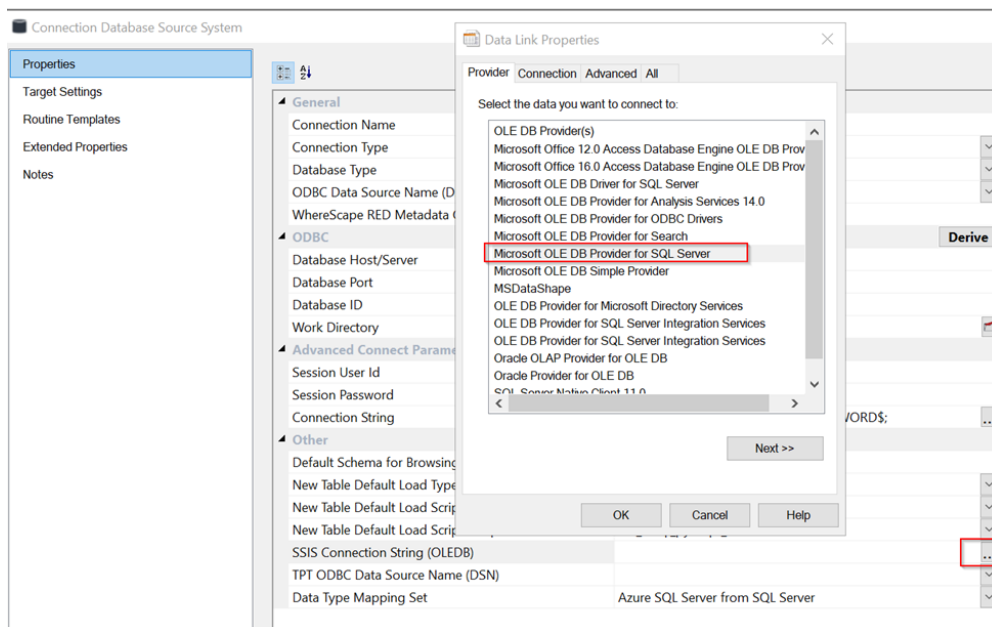
Install Visual Studio and Add Integration service Exception.

- **With SQL Server As Source:** -

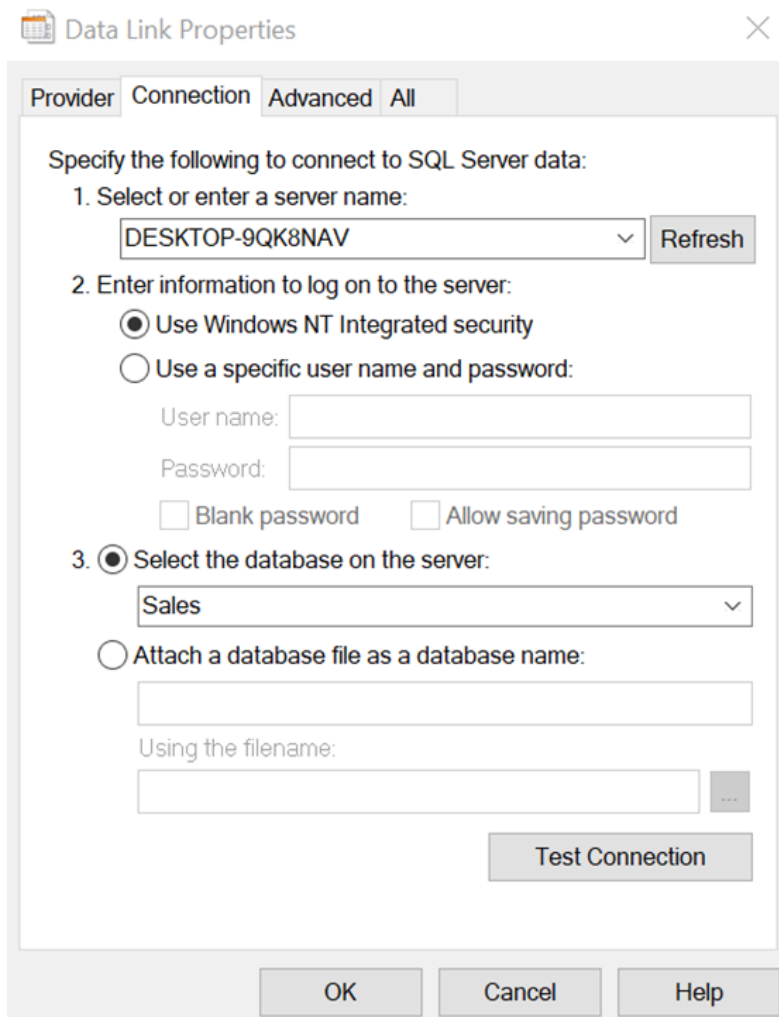
In the Source connection with database type as SQL Server, click on three dots in the SSIS connection string (OLEDB) option as below:



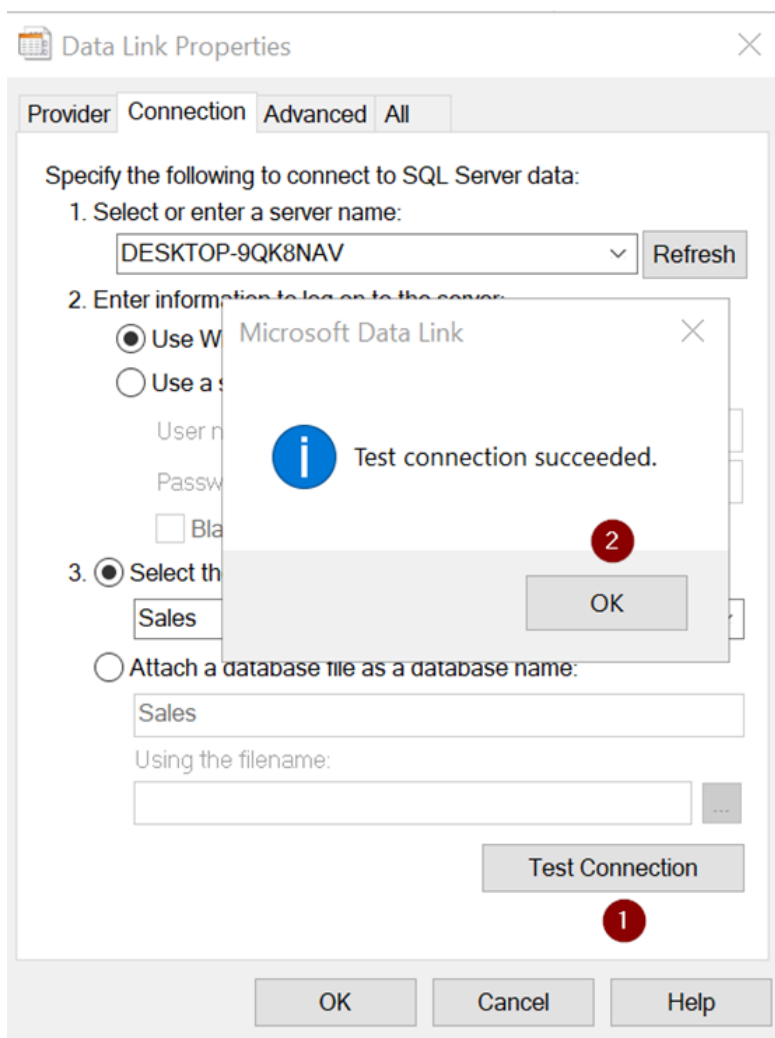
In the Data Link Properties window, select Microsoft OLE DB Provider for SQL Server:



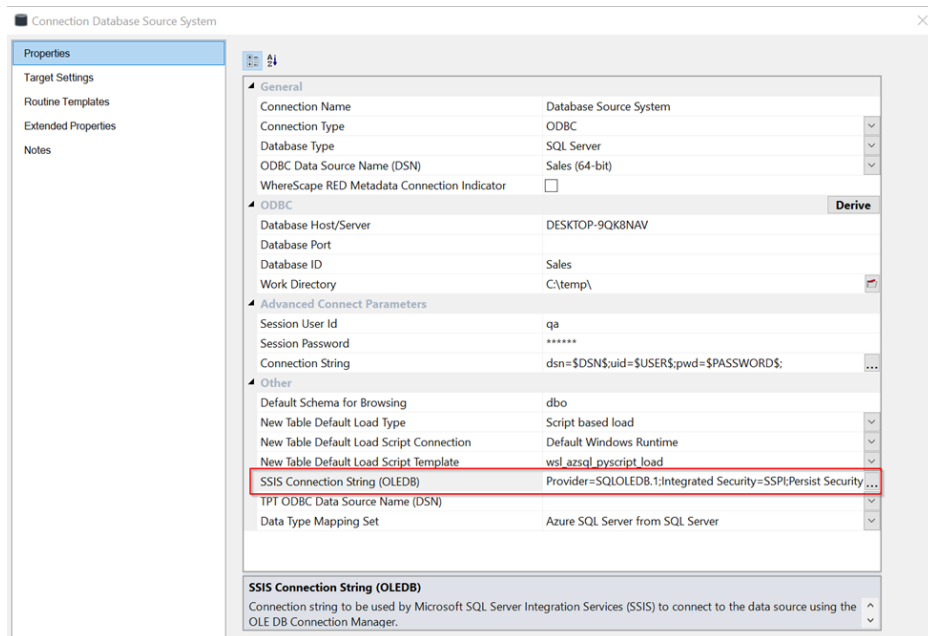
Provide Server and database details:



Test the connection:



SSIS Connection String generated successfully.



SSIS Connection String (OLEDB)

Connection string to be used by Microsoft SQL Server Integration Services (SSIS) to connect to the data source using the OLE DB Connection Manager.

NOTE: A connection string is typically composed of multiple property name/value pairs that are semi-colon delimited.

Provider=SQLOLEDB.1;Integrated Security=SSPI;Persist Security Info=False;Initial Catalog=Sales;Data Source=DESKTOP-9QK8NAV;Use Procedure for Prepare=1;Auto Translate=True;Packet Size=4096;Workstation ID=DESKTOP-9QK8NAV;Use Encryption for Data=False;Tag with column collation when possible=False

☒ Word Wrap

OK Cancel Help

With Oracle As Source: -

Connection Oracle

Properties

Target Settings

Routine Templates

Extended Properties

Notes

General

Connection Name: Oracle

Connection Type: ODBC

Database Type: Oracle

ODBC Data Source Name (DSN): Oraclecloud (64-bit)

WhereScape RED Metadata Connection Indicator: ☐

Derive

ODBC

Database Host/Server: 10.220.200.84:1521/orclpdb

Database Port:

Work Directory: C:\temp\

Advanced Connect Parameters

Session User Id: system

Session Password: *****

Connection String: dsn=\$DSN\$;uid=\$USER\$;pwd=\$PASSWORD\$;

Other

Default Schema for Browsing: load

New Table Default Load Type: Script based load

New Table Default Load Script Connection: Default Windows Runtime

New Table Default Load Script Template: wsl azsql pscrip load ssis

SSIS Connection String (OLEDB)

Connection string to be used by Microsoft SQL Server Integration Services (SSIS) to connect to the data source using the OLE DB Connection Manager.

In tnsnames.ora file , define database connection details as below:

New Volume (D:) > WINDOWS.X64_193000_db_home > network > admin

Name	Date modified	Type	Size
sample	4/9/2024 8:55 AM	File folder	
listener	4/9/2024 9:12 AM	ORA File	1 KB
sqlnet	4/9/2024 9:12 AM	ORA File	1 KB
sqlnet2404099AM1245.bak	4/9/2024 9:12 AM	BAK File	1 KB
tnsnames	11/8/2024 1:48 PM	ORA File	2 KB

```
ORACLE =
(DESCRIPTION =
  (ADDRESS = (PROTOCOL = TCP)(HOST = 10.220.200.84)(PORT = 1521))
  (CONNECT_DATA =
    (SERVER = DEDICATED)
    (SERVICE_NAME = orclpdb)
  )
)
```

Open Oracle Source connection and click on three dots in SSIS Connection string option:

Connection Oracle

Properties

Target Settings

Routine Templates

Extended Properties

Notes

General

Connection Name: Oracle

Connection Type: ODBC

Database Type: Oracle

ODBC Data Source Name (DSN): Oraclecloud (64-bit)

WhereScape RED Metadata Connection Indicator: ☐

ODBC

Database Host/Server: 10.220.200.84:1521/orclpdb

Database Port:

Work Directory: C:\temp\

Advanced Connect Parameters

Session User Id: system

Session Password: *****

Connection String: dsn=\$DSN\$;uid=\$USER\$;pwd=\$PASSWORD\$;

Other

Default Schema for Browsing: load

New Table Default Load Type: Script based load

New Table Default Load Script Connection: Default Windows Runtime

New Table Default Load Script Template: wsl azsql pscript load ssis

SSIS Connection String (OLEDB):

TPT ODBC Data Source Name (DSN):

Data Type Mapping Set: Azure SQL Server from Azure SQL Server

Default Transform Function Set: (Default)

SSIS Connection String (OLEDB)

Connection string to be used by Microsoft SQL Server Integration Services (SSIS) to connect to the data source using the OLE DB Connection Manager.

Select Oracle Provider for OLE DB option in Data Link Properties window:

Data Link Properties

Provider Connection Advanced All

Select the data you want to connect to:

OLE DB Provider(s)

Microsoft Office 16.0 Access Database Engine OLE DB Prov

Microsoft OLE DB Driver for SQL Server

Microsoft OLE DB Provider for Analysis Services 14.0

Microsoft OLE DB Provider for ODBC Drivers

Microsoft OLE DB Provider for Search

Microsoft OLE DB Provider for SQL Server

Microsoft OLE DB Simple Provider

MSDataShape

OLE DB Provider for Microsoft Directory Services

OLE DB Provider for SQL Server Integration Services

OLE DB Provider for SQL Server Integration Services

Oracle OLAP Provider for OLE DB

Oracle Provider for OLE DB

SQL Server Native Client 11.0

Next >>

OK Cancel Help

Provide the credentials as below:

Data Link Properties

Provider Connection Advanced All

Specify the following to connect to this data:

1. Enter the data source and/or location of the data:

Data Source: ORACLE

Location:

2. Enter information to log on to the server:

☐ Use Windows NT Integrated security

☒ Use a specific user name and password:

User name: system

Password:


☐ Blank password ☐ Allow saving password

3. Enter the initial catalog to use:

Test Connection

OK Cancel Help

Test the connection:

 Data Link Properties ✕

Provider **Connection** Advanced All


Specify the following to connect to this data:

1. Enter the data source and/or location of the data:

Data Source:


Location:

2. Enter ☐ ☒ **Microsoft Data Link** ✕

 Test connection succeeded.

3. Enter ▼

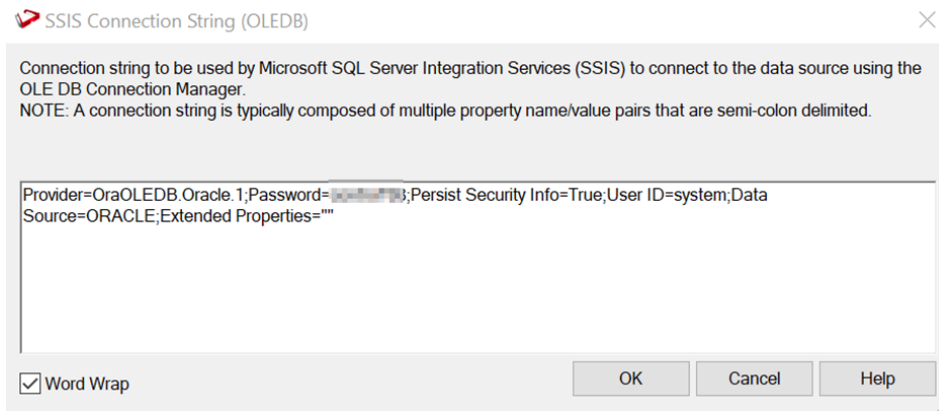
Connection string generated successfully:

 Connection Oracle ✕

Properties

Target Settings
Routine Templates
Extended Properties
Notes

General	
Connection Name	Oracle
Connection Type	ODBC
Database Type	Oracle
ODBC Data Source Name (DSN)	Oraclecloud (64-bit)
WhereScape RED Metadata Connection Indicator	<input type="checkbox"/>
ODBC Derive	
Database Host/Server	10.220.200.84:1521/orclpdb
Database Port	
Work Directory	C:\temp\
Advanced Connect Parameters	
Session User Id	system
Session Password	*****
Connection String	dsn=\$DSN\$;uid=\$USER\$;pwd=\$PASSWORD\$;
Other	
Default Schema for Browsing	load
New Table Default Load Type	Script based load
New Table Default Load Script Connection	Default Windows Runtime
New Table Default Load Script Template	wsl_azsql_pscript_load_ssis
SSIS Connection String (OLEDB)	Provider=OraOLEDB.Oracle.1;Password=*****;Persist Secu...
TPT ODBC Data Source Name (DSN)	
Data Type Mapping Set	Azure SQL Server from Azure SQL Server
Default Transform Function Set	(Default)



Post Install Steps – Optional

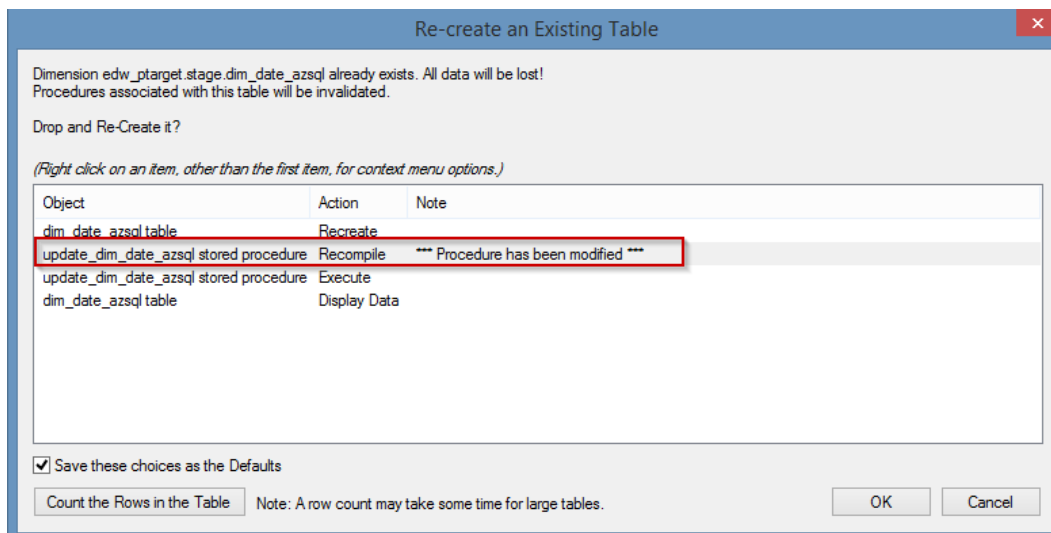
If you used the script Setup Wizard for installation then the following optional post install steps are available.

Configure Connections

There were two connections added that will optionally require your attention :

Below two are common for SQL Server

1. Connection: 'Database Source System' - this connection was setup as an example source connection,
 - open it's properties and set it up for a source DB in your environment
 - or you can remove it if not required
2. Execute Update Procedure for dim_date_azsql to **Initialize Date Dimension for Target**



NOTE: Please avoid regenerating the procedure update_dim_date_azsql as it is a custom procedure.

Source Enablement Pack Support

Source Pack Name	Supported By SQL Server	Supported Features	Prerequisites
------------------	-------------------------	--------------------	---------------

Cloud File Parser 1. Amazon S3 2. Azure Data Lake Storage Gen2 3. Google Cloud Storage	1. CSV 2. Excel 3. JSON 4. XML 5. AVRO 6. ORC 7. PARQUET	Bulk load	Refer to Windows Parser Guide
Windows Parser	1. CSV 2. Excel 3. JSON 4. XML 5. AVRO 6. ORC 7. PARQUET	Load Template, Source Properties will have option to select parser type to load the files.	Refer to Windows Parser Guide

Troubleshooting and Tips

Run As Administrator

Press the Windows Key on your keyboard and start typing cmd.exe, when the cmd.exe icon shows up in the search list right click it to bring up the context menu, select "Run As Administrator"

Now you have an admin prompt navigate to the folder where you have unpacked your WhereScape Red Enablement Pack to using the 'cd' command:

```
C:\Windows\system32> cd <full path to the unpacked folder>
```

Run Powershell (.ps1) scripts from the administrator prompt by typing the Powershell run script command, for example:

```
C:\temp\EnablementPack>Powershell -ExecutionPolicy Bypass -File .\Setup_Enablement_Pack.ps1
```

Notes: In the event you can not bypass the Powershell execution policy due to group policies you can instead try "-ExecutionPolicy RemoteSigned" which should allow unsigned local scripts.

Windows Powershell Script Execution

On some systems Windows Powershell script execution is disabled by default. There are a number of workarounds for this which can be found by searching the term "Powershell Execution Policy".

Here is the most common workaround which WhereScape suggests, which does not permanently change the execution rights:

Start a Windows CMD prompt as Administrator, change directory to your script directory and run the WhereScape Powershell scripts with this command:

- cmd:>Powershell -ExecutionPolicy Bypass -File .\<script_file_name.ps1>

Restarting failed scripts

Some of the setup scripts will track each step and output the step number when there is a failure. To restart from the failed step (or to skip the step) provide the parameter "-startAtStep <step number>" to the script.

Example:

```
Powershell -ExecutionPolicy Bypass -File .\<script_file_name.ps1> -startAtStep 123
```

Tip: to avoid having to provide all the parameters again you can copy the full command line with parameters from the first "INFO" message from the beginning of the console output.

Bulk load error on SQL SERVER

Interactive load

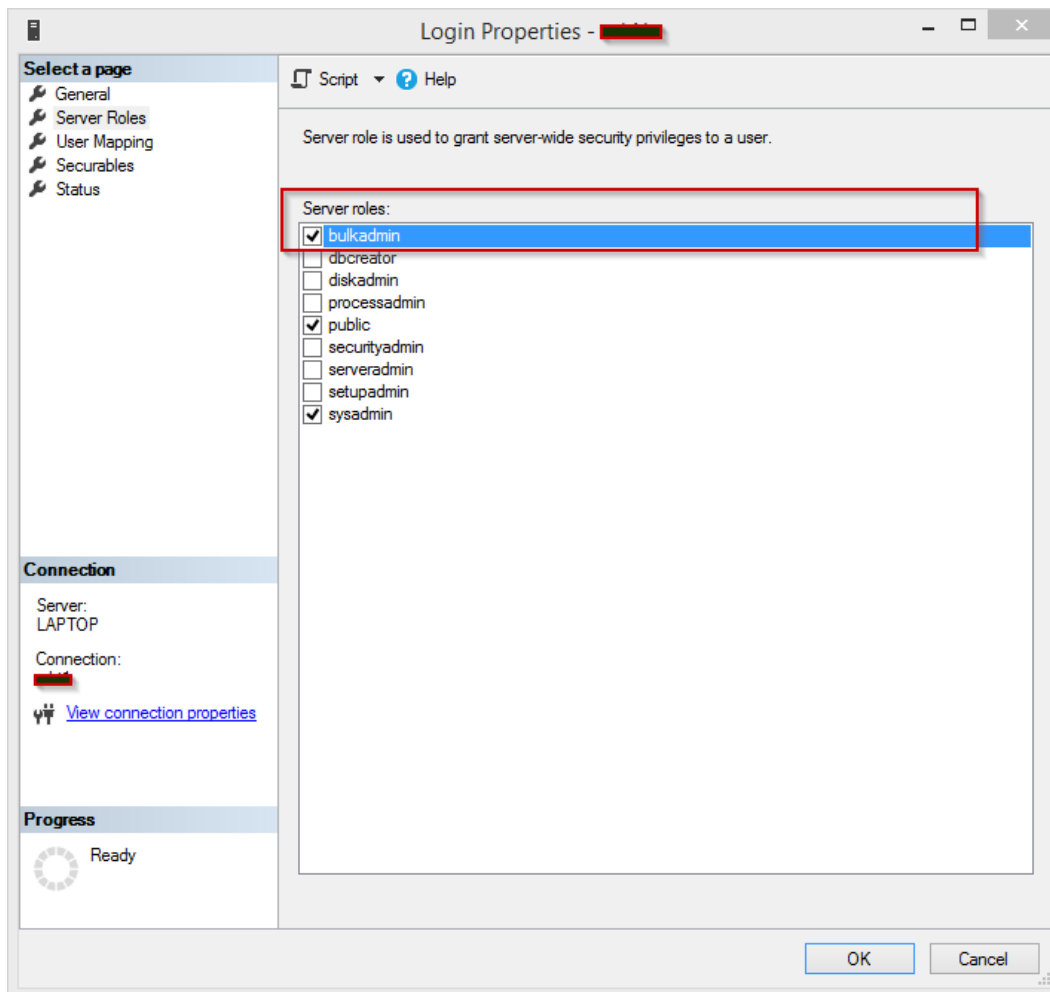
Results		
	Object	Message
✖	load_currency	FROM 'C:\temp\wsl_load_currency_32\wsl_load_currency_32.csv'
✖	load_currency	WITH (
✖	load_currency	FORMAT = 'CSV',
✖	load_currency	FIELDTERMINATOR = ' ',
✖	load_currency	ROWTERMINATOR = '\n',
✖	load_currency	FIELDQUOTE = '',
✖	load_currency	FIRSTROW = 2,
✖	load_currency	KEEPNULLS,
✖	load_currency	CODEPAGE = 'RAW')
✖	load_currency	
✖	load_currency	=====
✖	load_currency	Failed to load data: ('42000', '[42000] [Microsoft][ODBC Driver 17 for SQL Server][SQL Server]You do not have permission to use the bulk load statement. (4834) (SQLEXPDirectW)')

Scheduler load

Audit and Scheduler log					
Task	Status	Seq	Timestamp	Message	
load_currency	S	16	2024-02-14 14:20:57.986627	BULK INSERT load_currency_TMP	
load_currency	S	16	2024-02-14 14:20:57.989799	FROM 'C:\temp\wsl_load_currency_16\wsl_load_currency_16.csv'	
load_currency	S	16	2024-02-14 14:20:57.992282	WITH (
load_currency	S	16	2024-02-14 14:20:57.995242	FORMAT = 'CSV',	
load_currency	S	16	2024-02-14 14:20:57.997697	FIELDTERMINATOR = ' ',	
load_currency	S	16	2024-02-14 14:20:58.000023	ROWTERMINATOR = '\n',	
load_currency	S	16	2024-02-14 14:20:58.003199	FIELDQUOTE = '',	
load_currency	S	16	2024-02-14 14:20:58.006097	FIRSTROW = 2,	
load_currency	S	16	2024-02-14 14:20:58.009663	KEEPNULLS,	
load_currency	S	16	2024-02-14 14:20:58.011907	CODEPAGE = 'RAW')	
load_currency	S	16	2024-02-14 14:20:58.016231		
load_currency	S	16	2024-02-14 14:20:58.0199	=====	
load_currency	E	16	2024-02-14 14:20:58.098715	Failed to load data: ('42000', '[42000] [Microsoft][ODBC Driver 17 for SQL Server][SQL Server]You do not have permission to use the bulk load statement. (4834)...	
load_currency	I	16	2024-02-14 14:20:58.180042	Executing command: C:\Users\DELL\AppData\Local\Programs\Python\Python311\python.exe "C:\Windows\TEMP\wsl_16\script_load_currency.py" 8	
load_currency	I	16	2024-02-14 14:20:58.184597	Overriding environment: WSL_SCRIPT_1_COMMAND -> WSL_COMMAND	
load_currency	I	16	2024-02-14 14:20:58.187506	Overriding environment: WSL_SCRIPT_1_WORKDIR -> WSL_WORKDIR	

For bulk load error, the 'bulkadmin' permission is required.

SQL SERVER -> SECURITY -> LOGINS -> USER -> PROPERTIES -> SERVER ROLES



For bulk load error Operating system error code 5(Access is denied)

Failed to load data: ('42000', '[42000] [Microsoft][ODBC Driver 17 for SQL Server][SQL Server]Cannot bulk load because the file "C:\WhereScape\Temp\...\xxxx.csv" could not be opened. Operating system error code 5(Access is denied.). (4861) (SQLExecDirectW)')

1. Grant SQL Server access to the bulk load folder by adjusting folder permissions. Navigate to the folder, right-click, select "Properties," go to the "Security" tab, click "Edit," then "Add." In the new window, select "Advanced," click "Find Now," and locate the appropriate SQL Server user (e.g., SQLServerMSSQLUser\$UserName\$SQLExpress). Confirm by clicking "OK" through all opened dialogs.
2. If the first fix doesn't resolve the issue, verify if permissions are applied to subfolders as well. Navigate to the advanced settings, and check the 'Inheritance' status. If it's 'Disabled,' enable it by using the "Allow Inheritance" button.

Row Terminator For Linux

- load_vs_actor	S	103	2024-02-05 11:52:54.622049
- load_vs_actor	S	103	2024-02-05 11:52:54.623561
- load_vs_actor	E	103	2024-02-05 11:52:54.673828	Failed to load data: ('42000', '[42000] [Microsoft][ODBC Driver 17 for SQL Server][SQL Server]Cannot obtain the required interface ("IID_IColumnsInfo") from OLE D...
- load_vs_actor	I	103	2024-02-05 11:52:54.677089	Executing command: python "7tmp\perl_103\script_load_vs_actor.py" 8

Error Message:

Failed to load data: ('42000', '[42000] [Microsoft][ODBC Driver 17 for SQL Server][SQL Server]Cannot obtain the required interface ("IID_IColumnsInfo") from OLE DB provider "BULK" for linked server "(null)". (7301) (SQLExecDirectW)')

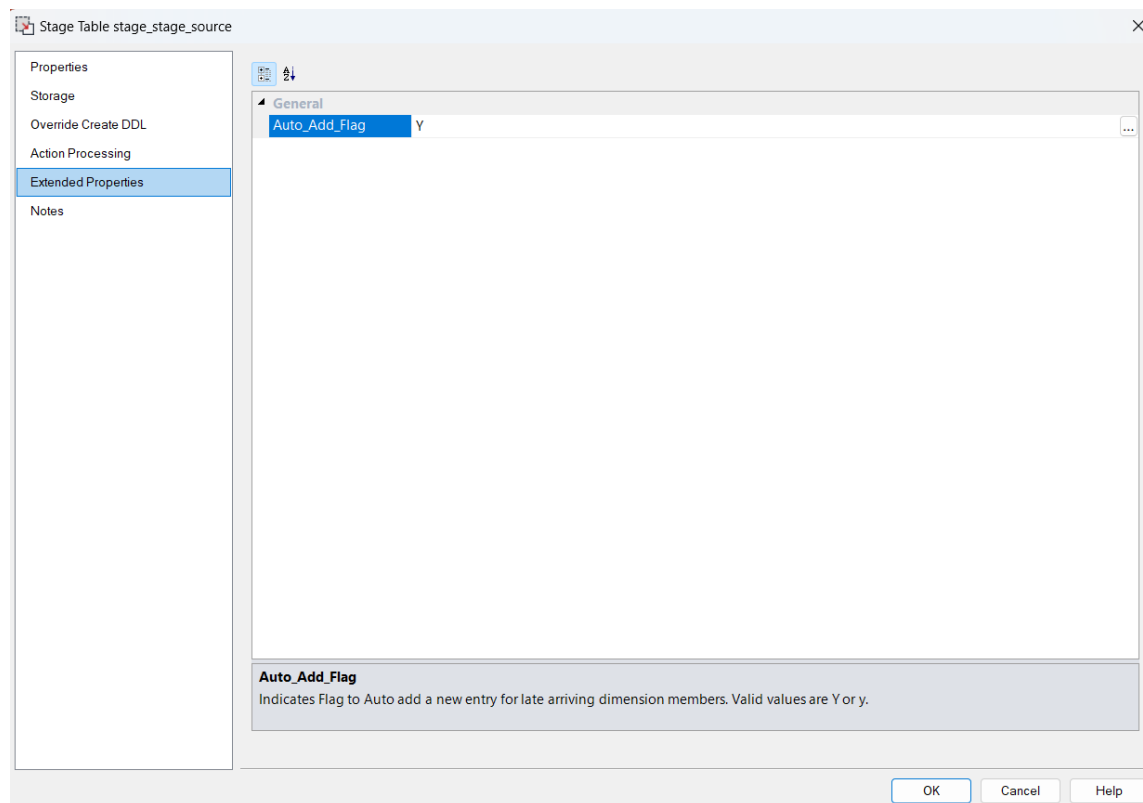
When you specify '\n' as a row terminator for bulk import in *UNLOAD_RECORD_CHAR* extended property or source properties, or implicitly use the default row terminator, BULK INSERT statement expects a carriage return-line feed combination (CRLF) as the row terminator. If your source file uses a line feed character only (LF) as the row terminator - as is typical in files generated on Unix and Linux computers - use hexadecimal notation to specify the LF row terminator. For example use '0x0A' in *UNLOAD_RECORD_CHAR* extended property or source properties for Unix and Linux machines.

Note: The hexadecimal notation is not required for Parquet file for Unix and Linux machines

Auto add a new entry for late arriving dimension members

Set This Extended property of stage table Named **Auto_Add_flag** to Y/y to add a new entry for late arriving dimensions.

If this flag holds any thing other than Y/y , it works as a normal stage table.



Python requirements for offline install

Additionally to the base Python installation being required, the WhereScape Python Template set also requires certain additional Python libraries. The install scripts uses the PIP (package manager) to download these libraries, however for offline installs you will need to install the required libraries yourself.

Required Python libraries/add-ons:

- pywin32-ctypes
- python-tds
- pywin32
- glob2
- gzip-reader
- regex
- pyodbc

If a valid RED installation can not be found

If you have RED 10.x or higher installed but the script (Setup_Enablement_Pack.ps1) fails to find it on you system then you are most likely running PowerShell (x86) version which does not show installed 64 bit apps by default. Please open a 64 bit version of Powershell instead and re-run the script.