

Install Guide - SetupWizard - Hive - RED 10.4

WhereScape Enablement Pack for Hive - RED 10.4

This is a guide to installing the WhereScape Enablement Pack for Hive for WhereScape RED10

Table of Contents

[Prerequisites For PostgreSQL Metadata](#)

[Prerequisites for Target Database](#)

[Installation Through Setup Wizard](#)

[Post Install Steps - Optional](#)

[Troubleshooting and Tips](#)

Prerequisites For PostgreSQL Metadata

Before you begin the following prerequisites must be met:

- Create Database and ODBC DSN :
 - Supported* version of PostgreSQL (PostgreSQL 12 or higher)
 - A database to house the RED Metadata Repository.
 - A database to house scheduler (Optional)
- Software Installations
 - WhereScape RED10 with valid license key entered and EULA accepted
 - WhereScape Enablement Pack for target database version RED10.
- Windows Powershell (64 bit) version 4 or higher
 - To check Windows Powershell Version:
 - Run below command in Windows Powershell

```
Get-Host|Select-Object Version
```

- Run below command in Command Prompt

```
powershell $psversiontable
```

- Run the following command using PowerShell
 - The security protocol TLS 1.0 and 1.1 used by PowerShell to communicate with PowerShell gallery has deprecated and TLS 1.2 has been made mandatory

```
[Net.ServicePointManager]::SecurityProtocol = [Net.ServicePointManager]::SecurityProtocol -bor TLS12
Register-PSRepository -Default -Verbose
Set-PSRepository -Name "PSGallery" -InstallationPolicy Trusted
```

- Progress bar placeholder info line

```
Install-Module -Name PoshProgressBar -SkipPublisherCheck -Force
```

* : RED supports the following versions for the metadata repository: PostgreSQL 12 or higher

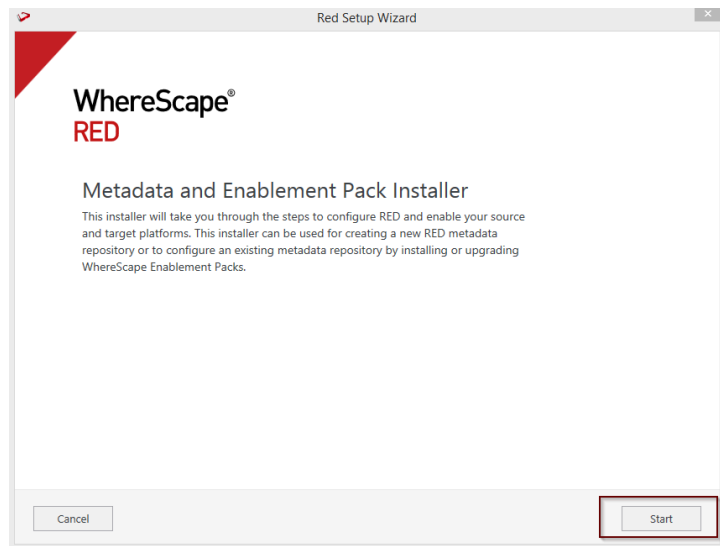
Prerequisites for Target Database

Before you begin the following prerequisites must be met:

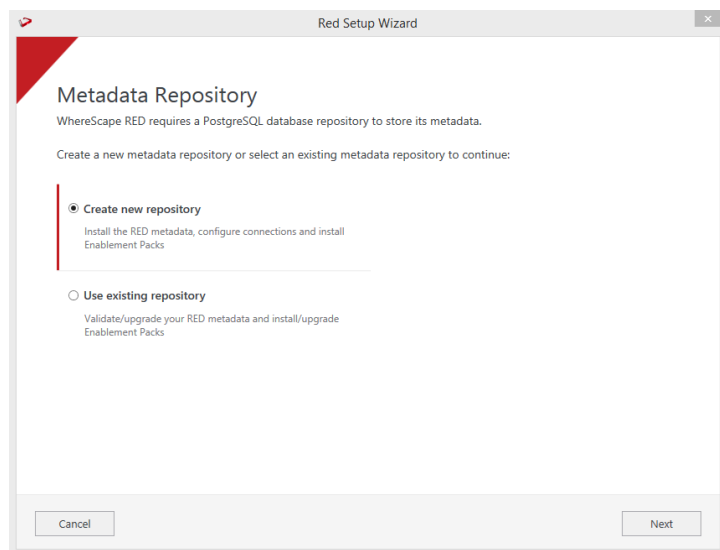
- Access to a Hive (Target Environment) with the following connectivity information :
 1. Server Name
 2. Database Name
 3. User Name
 4. Password
- Hive software installed
 - [Hive ODBC driver \(64-bit\)](#)
 1. Add ODBC DSN for Hive Database
- [Python 3.11 or higher](#)
 - Select "Add Python 3.11 to PATH" from installation Window
 - Pip Manager Install with command : `python -m pip install --upgrade pip`

Installation Through Setup Wizard

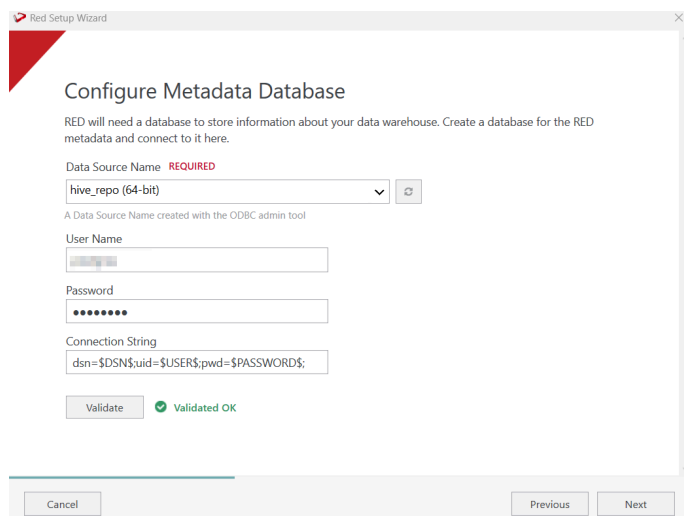
Run Setup Wizard as administrator



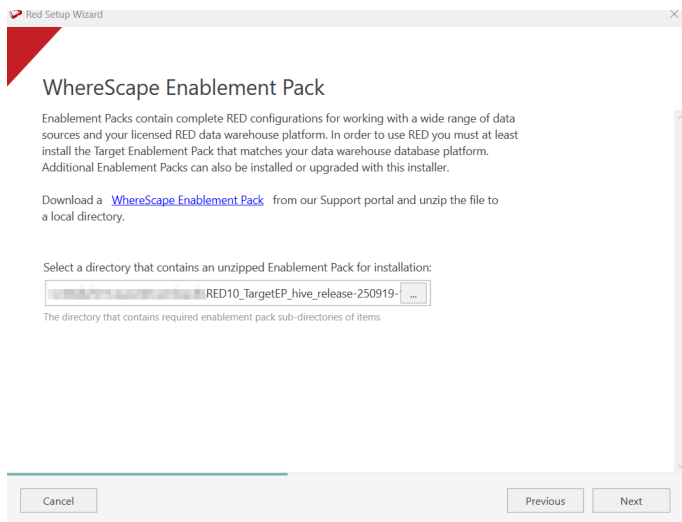
Create new repository or upgrade already existing repository.



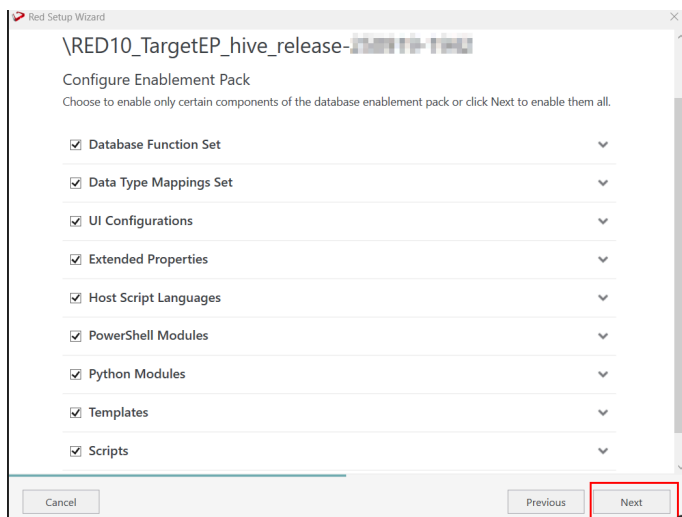
Select the created ODBC DSN, input login details, Connection String and then select "Validate". Press Next



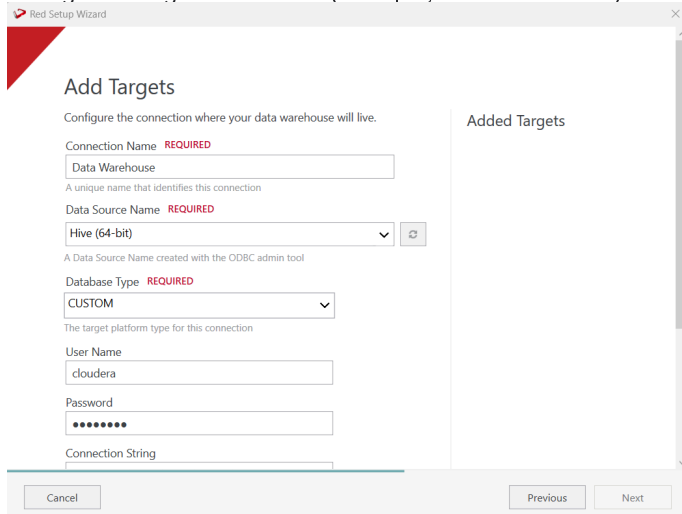
Select the directory that contains unzipped Enablement Pack for installation. Press Next

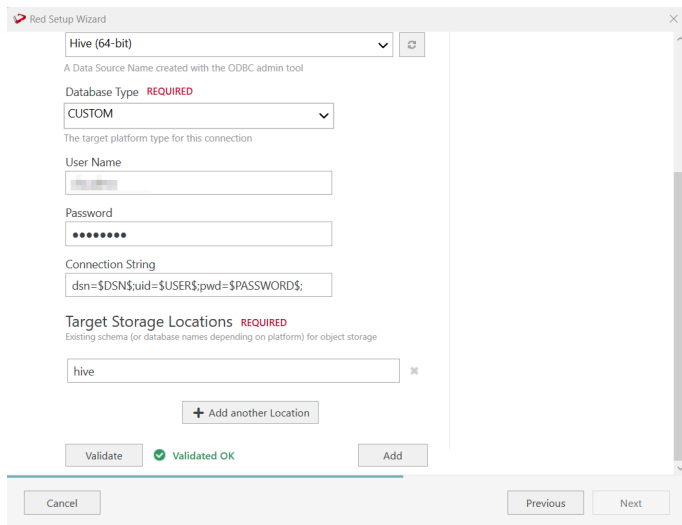


Using the check boxed list, include or exclude the components that are to be installed. Press Next.



Configure a target connection (example, Data Warehouse) and its target locations. Validate and press ADD.





Red Setup Wizard

Hive (64-bit)

A Data Source Name created with the ODBC admin tool

Database Type **REQUIRED**

CUSTOM

The target platform type for this connection

User Name

Password

Connection String

dsn=\$DSN\$uid=\$USER\$pwd=\$PASSWORD\$

Target Storage Locations **REQUIRED**

Existing schema (or database names depending on platform) for object storage

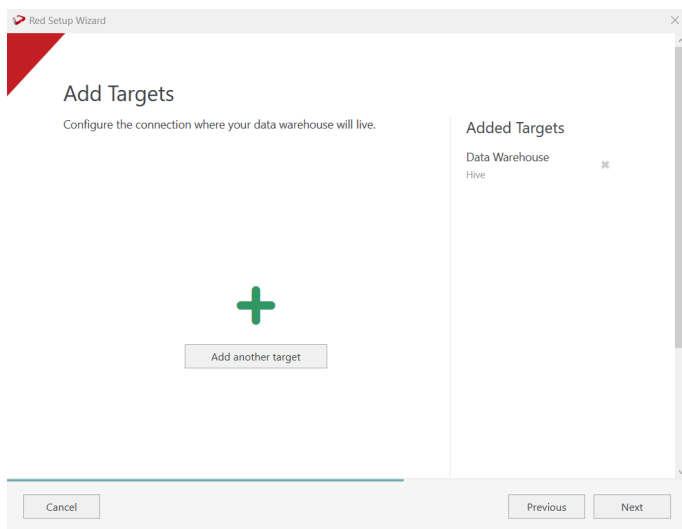
hive

+ Add another Location

Validate Validated OK Add

Cancel Previous Next

When done, press ADD and then Press Next to advance.



Red Setup Wizard

Add Targets

Configure the connection where your data warehouse will live.

Added Targets

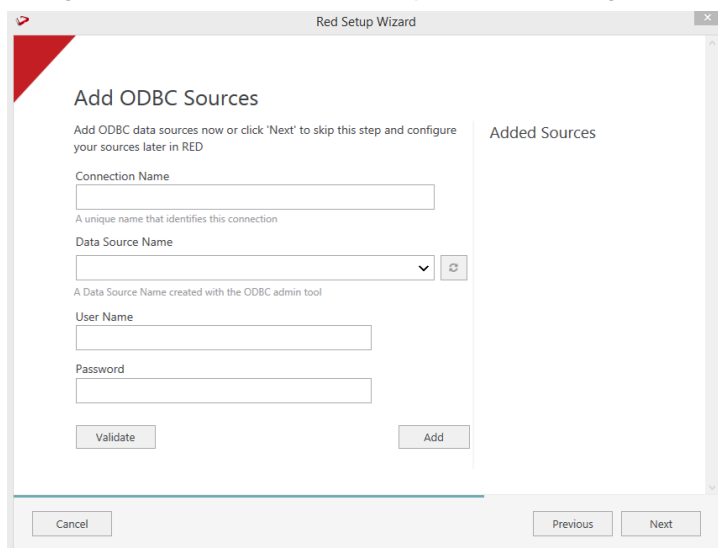
Data Warehouse

Hive

+ Add another target

Cancel Previous Next

Configure a data source connection (optional) and its target locations. Validate and press ADD. Press Next to advance.



Red Setup Wizard

Add ODBC Sources

Add ODBC data sources now or click 'Next' to skip this step and configure your sources later in RED

Connection Name

A unique name that identifies this connection

Data Source Name

A Data Source Name created with the ODBC admin tool

User Name

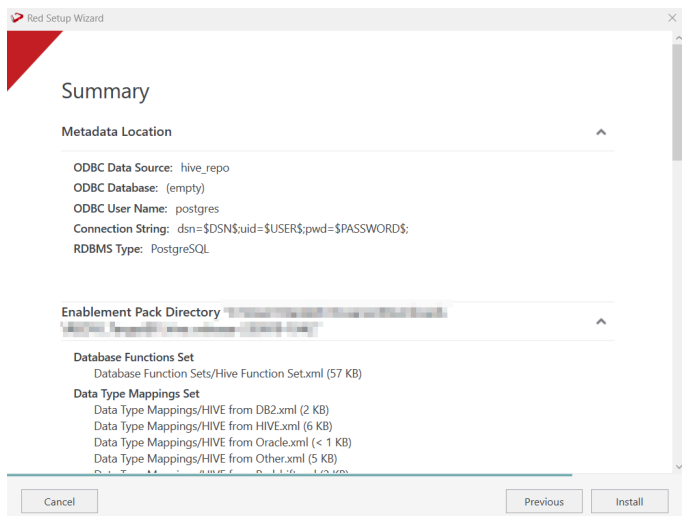
Password

Validate Add

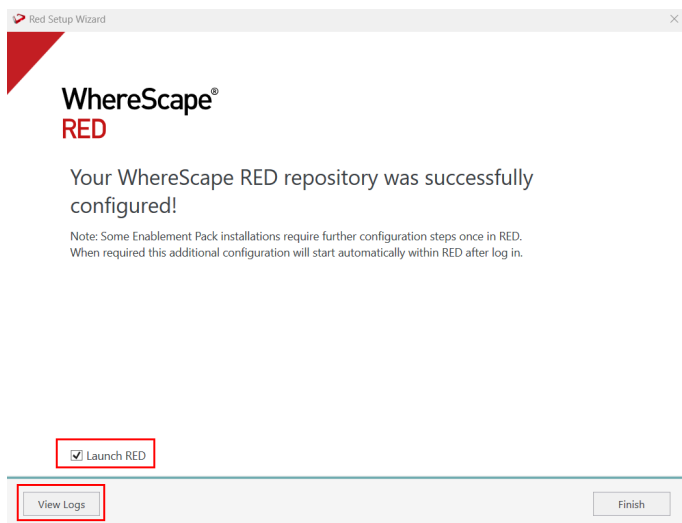
Added Sources

Cancel Previous Next

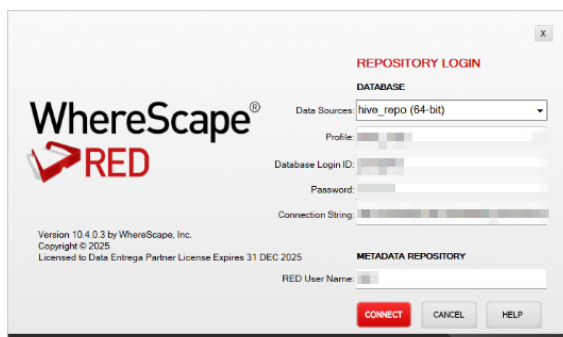
Review the installation summary and click Install



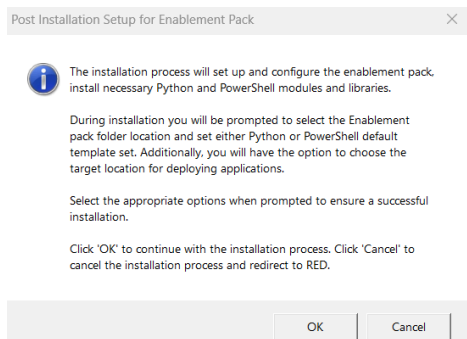
Clicking on the View Logs will take to the installation log. Click on Finish once the installation is completed successfully.



Login to WhereScape RED.

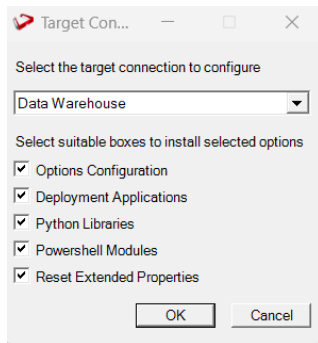


Note: There is a post-install script that will run at the first login to RED10 to complete the post setup wizard installation process. You will be directed to below PowerShell window which will give brief explanation about post installation process.

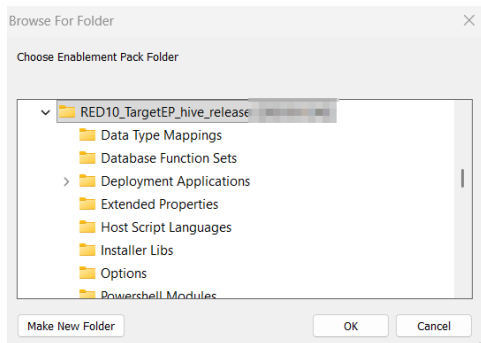


Press OK to start the post installation. If pressed Cancel installation will stop and user will be directed to RED.

The user will be directed to the window below, where they have to select the target connection to be configured. Additionally, by deselecting the provided options, the user can choose not to install a particular option. "Reset Extended Properties" is deselected by default.

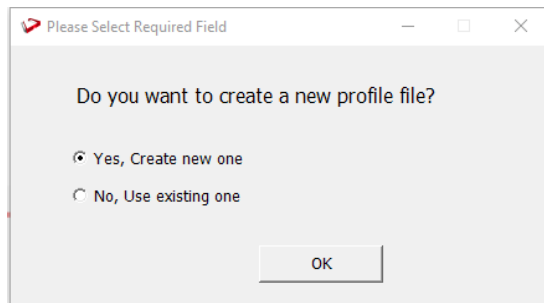


You will be directed to below PowerShell window. Provide the directory that contains unzipped Enablement Pack.

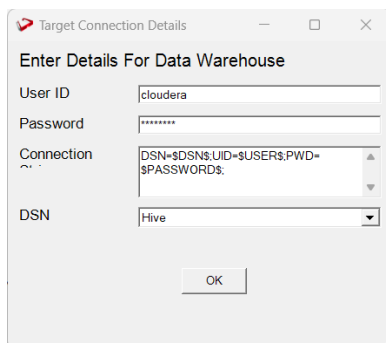


Press OK

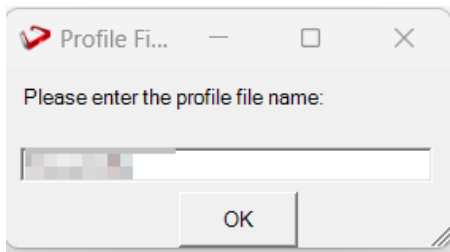
The user will be directed to the window below, where they have to select if the user wants to create a new profile.



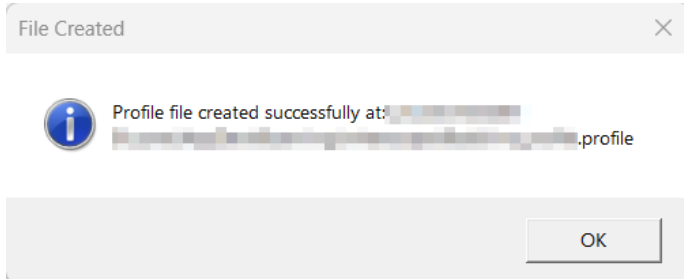
If the user selects 'Yes,' they must enter the data warehouse details. If the user selects 'No,' they must choose an existing profile file to use.



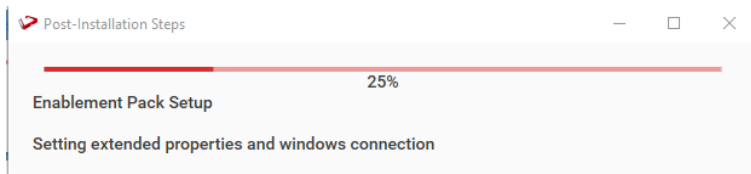
Enter profile file name



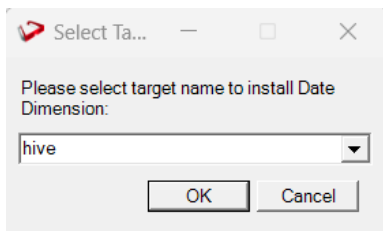
profile file gets created successfully



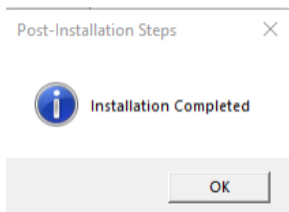
The progress bar will show the post installation progress.



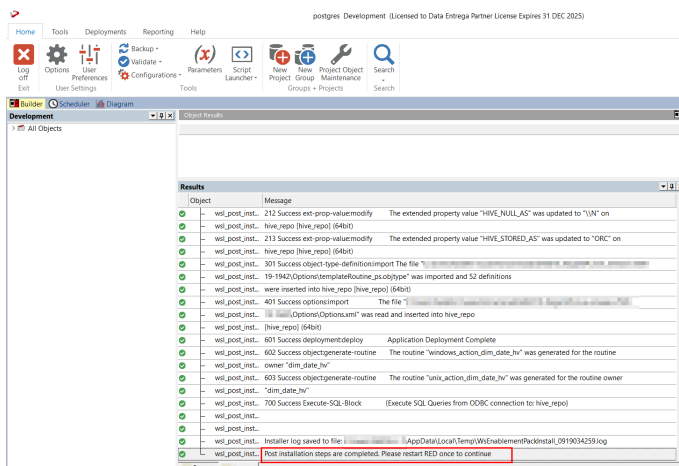
User will have to choose the schema for the target setting that were provided. One pop up will come for setting default target for Date Dimension.



After selecting the target progress bar will show the progress for the installation and once it's completed, you will get the below pop up.



After pressing OK RED10 will open automatically. User will need to restart RED once.



Post Install Steps - Optional

If you used the script 'Setup_Enablement_Pack.ps1' then the following optional post install steps are available

Configure Connections

There were two connections added that will optionally require your attention :

Below two are common for SQL Server

1. Connection: 'Database Source System' - this connection was setup as an example source connection,
 - open it's properties and set it up for a source DB in your environment
 - or you can remove it if not required
2. Execute Update Procedure for dim_date_hv to **Initialize Date Dimension for Target**
3. Connection: Data Warehouse('Hive') - this connection was setup as per parameters provided in Setup Wizard
 - a. open it's properties and check extended properties tab, set it up for **JDBC URL** and **JDBC DRIVER**

Troubleshooting and Tips

Run As Administrator

Press the Windows Key on your keyboard and start typing cmd.exe, when the cmd.exe icon shows up in the search list right click it to bring up the context menu, select "Run As Administrator"

Now you have an admin prompt navigate to to the folder where you have unpacked your WhereScape Red Enablement Pack to using the 'cd' command:

```
C:\Windows\system32> cd <full path to the unpacked folder>
```

Run Powershell (.ps1) scripts from the administrator prompt by typing the Powershell run script command, for example:

```
C:\temp\EnablementPack>Powershell -ExecutionPolicy Bypass -File .\Setup_Enablement_Pack.ps1
```

Notes: In the event you can not bypass the Powershell execution policy due to group policies you can instead try "-ExecutionPolicy RemoteSigned" which should allow unsigned local scripts.

Windows Powershell Script Execution

On some systems Windows Powershell script execution is disabled by default. There are a number of workarounds for this which can be found by searching the term "Powershell Execution Policy".

Here is the most common workaround which WhereScape suggests, which does not permanently change the execution rights:

Start a Windows CMD prompt as Administrator, change directory to your script directory and run the WhereScape Powershell scripts with this command:

- cmd:>Powershell -ExecutionPolicy Bypass -File .\<script_file_name.ps1>

Restarting failed scripts

Some of the setup scripts will track each step and output the step number when there is a failure. To restart from the failed step (or to skip the step) provide the parameter "-startAtStep <step number>" to the script.

Example:

```
Powershell -ExecutionPolicy Bypass -File .\<script_file_name.ps1> -startAtStep 123
```

Tip: to avoid having to provide all the parameters again you can copy the full command line with parameters from the first "INFO" message from the beginning of the console output.

If a valid RED installation can not be found

If you have RED 10.x or higher installed but the script (Setup_Enablement_Pack.ps1) fails to find it on you system then you are most likely running PowerShell (x86) version which does not show installed 64 bit apps by default. Please open a 64 bit version of Powershell instead and re-run the script.